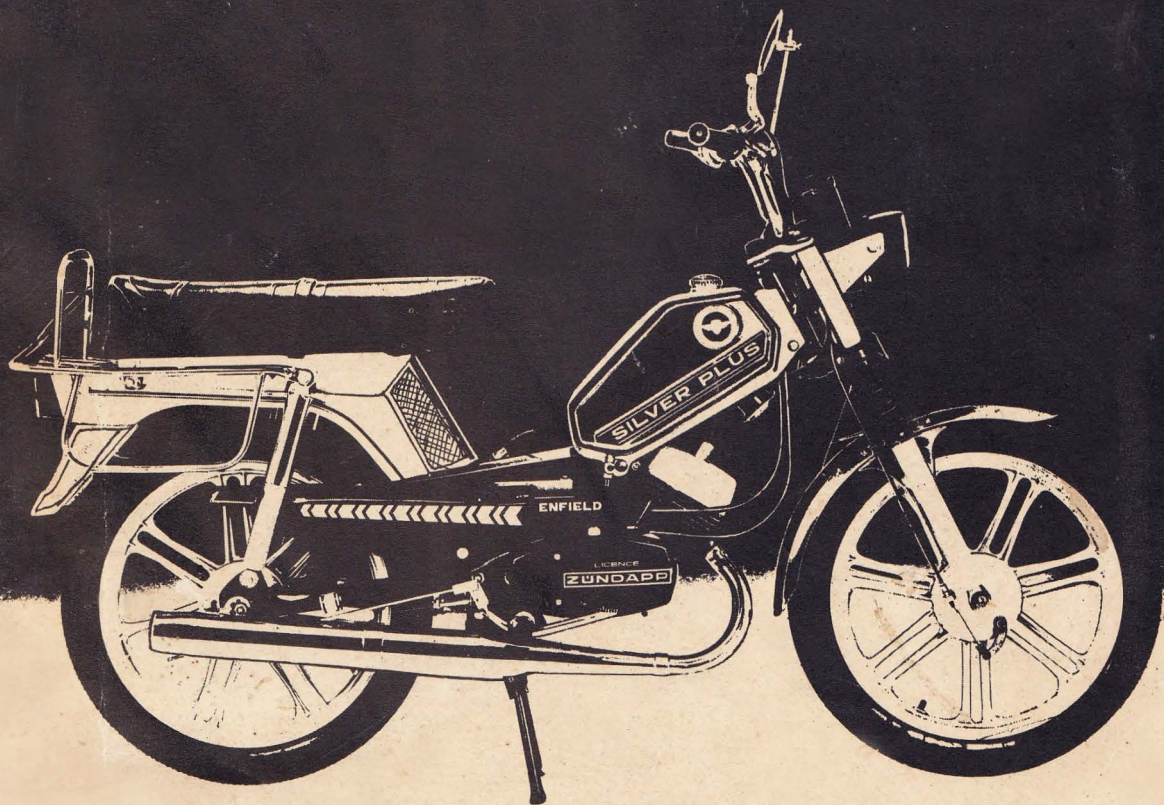


Spare Parts Catalogue



ENFIELD

SILVER PLUS

CONTENTS

Engine

Crankcase LH - Magneto Cover	1
Crankcase - RH - Clutch Cover -	
Clutch Actuating ARM	3
Clutch Cover - Clutch Actuating ARM	5
Cylinder - Inlet Manifold - Crank Shaft	7
Carburettor	9
Carburettor - Air Filter	11
Main Drive Shaft - Clutch Bell	13
Gear Shift Lever - Shift Fork Assembly -	
Selector Shaft	15
Kick Starter Assembly	17
Clutch Assembly	19
Silencer Assembly	21

Frame

Frame - Engine Fairing - Steering Lock and	
Key - Steering Bearing Assembly	23
Engine Mounting Bracket	25
Front Suspension	27
Handle Bar - Handle Bar Clamp -	
Rear View Mirror	28
Rear Suspension - Foot Rest	29
Front Wheel - Brake Assembly 120 MM	31
Rear Wheel - Brake Assembly 120 MM -	
Spocket	33
Head Lamp Bracket - A/C Horn	35
Cockpit	37
Brake Pedal Assembly - Stop Light Switch	39
Throttle Control - Gear Change Assembly -	
Cable Assembly	41
Mudguard Front and Rear - Tail Lamp	43
Petrol Tank	45
Dual Seat - Seat Frame - Centre Stand	47
Luggage Carrier	49
Magneto Assembly	50
ET Coil and Wiring Harness	51
Numerical Index	52

CRANKCASE LH MAGNETO COVER

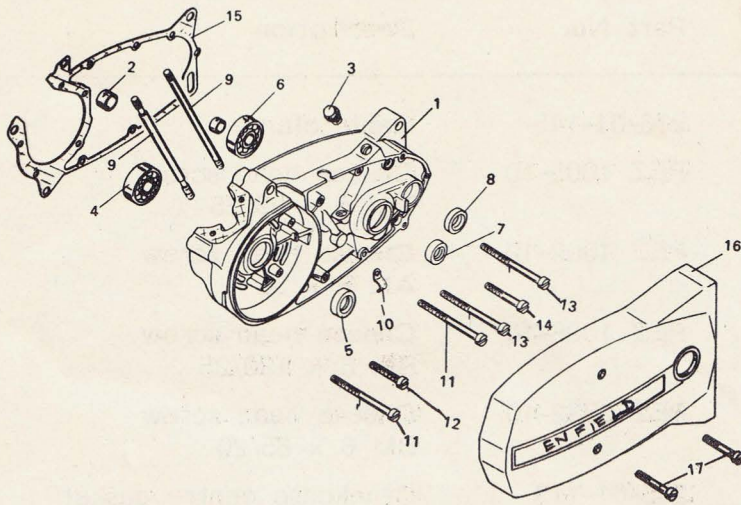


Fig No.	Part No.	Description	No. Off.
1-3	278-01-913	Crankcase LH with bush and filler plug	1
1	278-01-139	Crankcase LH (Not Serviced)	1
2	265-01-108	Main drive shaft bearing bush 14 x 18 x 11	1
3	PEZ 1174-32	Screw Plug with Clip	1
4	PEZ 0991-28	Crank shaft ball bearing 6203/C3 17 x 40 x 12	1
5	277-01-136	Crank shaft oil seal 17 x 28 x 7	1
6	PEZ 0991-28	Gear shift-shaft ball bearing 6203/C3 17 x 40 x 12	1
7	265-01-135	Gear shift-shaft oil seal 16 x 24 x 7	1
8	285-01-153	Kick starter oil seal 20 x 26 x 7	1
9	265-01-100	Cylinder stud M 7 x 122	2

Fig No.	Part No.	Description	No. Off.
10	276-01-145	Cable clamp	1
11	PEZ 1005-10	Cheese head screw BM 6 x 98/25	6
12	PEZ 1003-10	Cheese head screw AM 6 x 35	2
13	PEZ 1006-10	Cheese head screw BM 6 x 120/25	3
14	PEZ 0882-10	Cheese head screw BM 6 x 65/20	1
15	265-01-117	Crankcase centre gasket	1
16	278-01-141	Crank case Cover	1
17	PEZ 0883-10	Cheese head screw BM 6 x 55	2

CRANKCASE RH - CLUTCH COVER - CLUTCH ACTUATING ARM

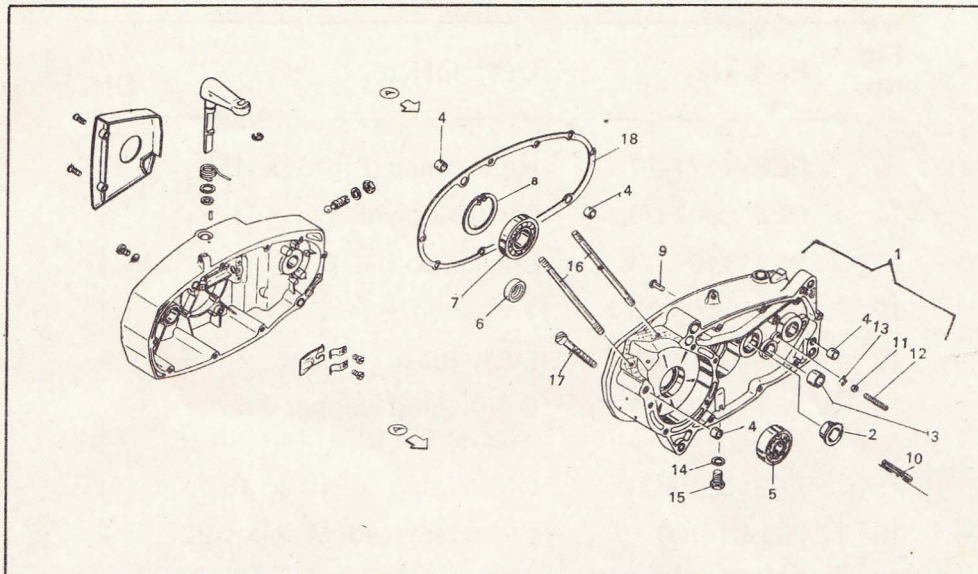


Fig No.	Part No.	Description	No. Off.
1-4, 9,38	278-01-914	Crankcase RH with bushes	1
1	278-01-140	Crankcase RH (Not serviced)	1
2	265-01-102	Bearing Bush (Shift shaft) 18 x 23 x 8.2	1
3	267-01-153	Kick starter shaft bush 16 x 18 x 17.25	1
4	250-01-229	Locating bush 7.0 x 10.2 x 9.5	4
5	PEZ 5010-28	Crank shaft ball bearing 6202/C3 15 x 35 x 11	1
6	255-01-144	Crank shaft oil seal 15 x 24 x 7	1
7	PEZ 0908-28	Clutch bell ball bearing 16005/C3 25 x 47 x 8	1
8	PEZ 0661-23	Clutch bell circlip J 47 x 1.75	1

Fig No.	Part No.	Description	No. Off.
9	PEZ 1171-27	Half round Pin 5 x 15	1
10	PEZ 0801-26	Spring dowel 5 x 45	1
11	PEZ 1101-14	Lock nut BM 6	1
12	PEZ 1100-13	Threaded Pin M 6 x 37	1
13	265-01-138	Lock plate	1
14	PEZ 0827-21	Drain plug copper washer A 10 x 14	1
15	PEZ 0846-08	Drain plug M 10 x 18	1
16	265-01-100	Cylinder stud M 7 x 122	2
17	PEZ 1004-10	Cheese head screw BM 6 x 50	1
18	265-01-118	Clutch cover gasket	1

CLUTCH COVER - CLUTCH ACTUATING ARM

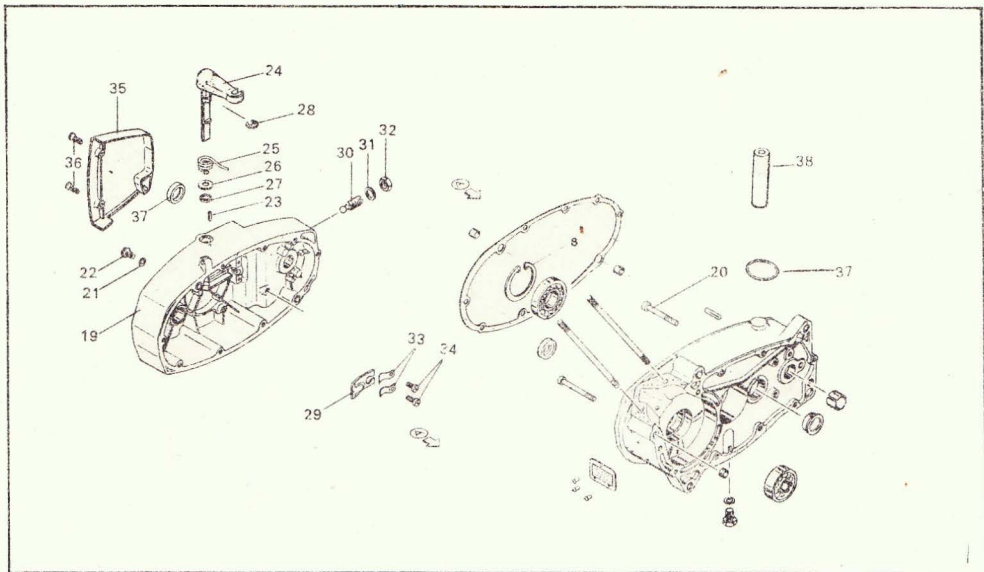


Fig No.	Part No.	Description	No. Off.
19	278-01-150	Crank case cover RH	1
20	PEZ 0881-10	Cheesehead screw BM 6x45	1
21	PEZ 0828-21	Oil level screw aluminium washer A 6 x 10	1
22	PEZ 0892-11	Oil level screw AM 6x12	1
23	PEZ 0799-26	Spring dowel 3 x 12	1
24	265-06-602	Clutch lever	1
25	265-06-112	Torsion spring	1
26	281-06-115	Washer 12 x 17 x 0.5	1
	281-06-114	Washer 12 x 17 x 0.2	AR
27	405-15-388	'O' ring 11 x 2.5	1
28	PEZ 0796-24	Radial retaining ring-8	1
29	265-06-104	Clutch tongue	1
30	265-06-106	Adjusting screw M 10 x 1	1
31	PEZ 0827-21	Copper washer A 10 x 14	1

AR - As Required

Fig No.	Part No.	Description	No. Off.
32	PEZ 0842-14	Hex. lock nut M 10 x 1	1
33	265-06-109	Leaf spring	2
34	PEZ 0886-10	Cheese head screw AM 4 x 6	2
35	284-01-176	Terminal cover	1
36	PEZ 0898-13	Counter sunk screw AM 5 x 20	2
37	PEZ 1102-31	Sealing cap 22	1
38	265-01-104	Bearing pipe	1

CYLINDER - INLET MANIFOLD - CRANK SHAFT

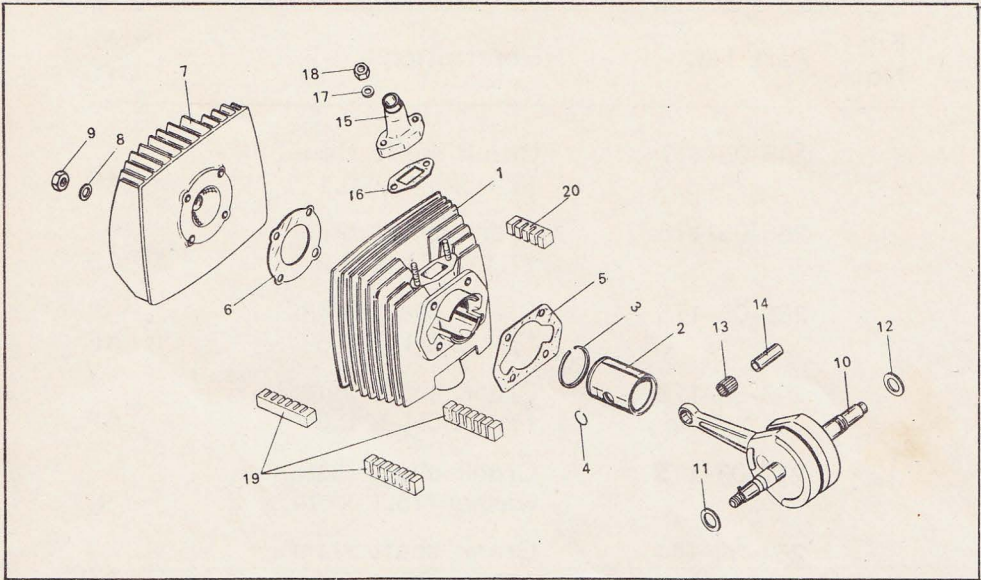


Fig No.	Part No.	Description	No. Off.
1-4	278-02-743	Cylinder, piston, ring & circlip	1
1	278-02-610*	Cylinder	1
2	248-02 729*	Piston 39 MM	1
3	248-02-107	Piston ring 39 x 36 x 1.5	1
4	PEZ 1000-24	Wire circlip A 12	2
5	276-02-219	Cylinder base gasket 0.75 MM	1
6	284-02-104	Cylinder head gasket 0.1 MM	1
7	278-02-121	Cylinder head	1
8	265-02-120	Fiat washer 7.2 x 15 x 3	4
9	PEZ 0838-14	Hex. nut M 7	4
10-13-			
14	280-03-612	Crankshaft assembly	1
11	277-03-111	Distance washer 17.1 x 24 x 1.5 x 2	1

* specify grade mark when ordering spares

Fig No.	Part No.	Description	No. Off.
	265-05-177	Crank shaft shim 17.1 x 24 x 0.1	AR
	265-05-176	Crank Shaft shim 17.1 x 24 x 0.2	AR
	265-05-175	Crank shaft shim 17.1 x 24 x 0.5	AR
	265-05-179	Crank shaft shim 17.1 x 24 x 0.8	AR
12	277-03-115	Crank shaft distance washer 15.1 x 24 x 2	1
	261-05-144	Crank shaft shim 15.1 x 25 x 0.1	AR
	261-05-137	Crank shaft shim 15.1 x 24 x 0.2	AR
	261-05-138	Crank shaft shim 15.1 x 24 x 0.5	1
	261-05-132	Crank shaft shim 15.1 x 24 x 0.8	AR
13	258-03-600	Needle cage 12 x 15 x 15	1
14	250-02-124	Gudgeon pin 12 MM	1
15	278-04-137	Inlet manifold	1
16	278-04-102	Manifold gasket	1
17	PEZ 0809-18	Flat washer 6.4	2
18	PEZ 0945	Hex. nut M 6	2
19	250-02-119	Damper rubber (long)	3
20	PEZ 0415-30	Damper rubber (short)	1

AR - As Required

CARBURETTOR

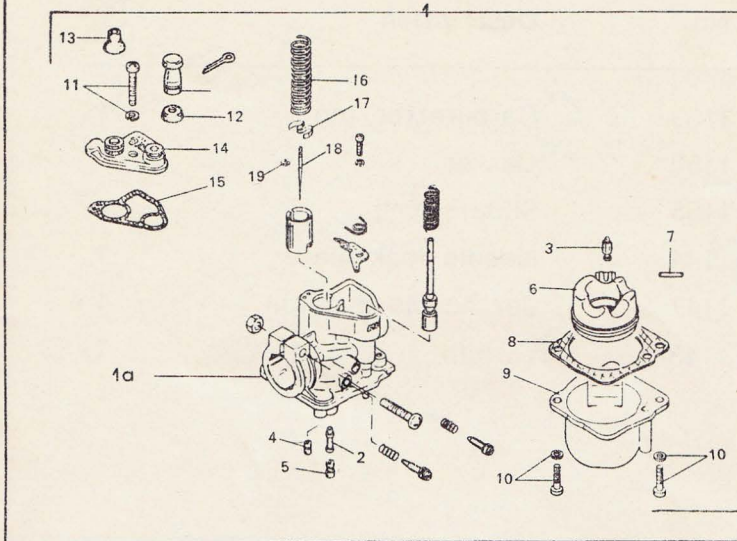


Fig No.	Part No.	Description	No. Off.
1	278-04-771	Carburettor VM 13	1
1a		Carburettor minus chamber body	
2	PEZ 1148	Needle Jet E 3	1
3	PEZ 1160	Floatneedle	1
4	PEZ 1141	Pilot jet 40	1
5	PEZ 1142	Main jet 55	1
6	PEZ 1159	Float	1
7	PEZ 1161	Float pin	1
8	PEZ 1139	Float bowl gasket	1
9	PEZ 1140	Float bowl	1
10	PEZ 1150	Philips screw with washer	2
11	PEZ 1158	Philips screw with washer	1
12	PEZ 1164	Choke rubber cap	1
13	PEZ 1154	Throttle rubber cap	1

Fig No.	Part No.	Description	No. Off.
14	PEZ 1153	Carburettor top	1
15	PEZ 1152	Gasket	1
16	PEZ 1155	Slide spring	1
17	PEZ 1144	Needle lock plate	1
18	PEZ 1147	Jet needle 5 notch	1
19	PEZ 1143	Circlip	1

CARBURETTOR - AIR FILTER

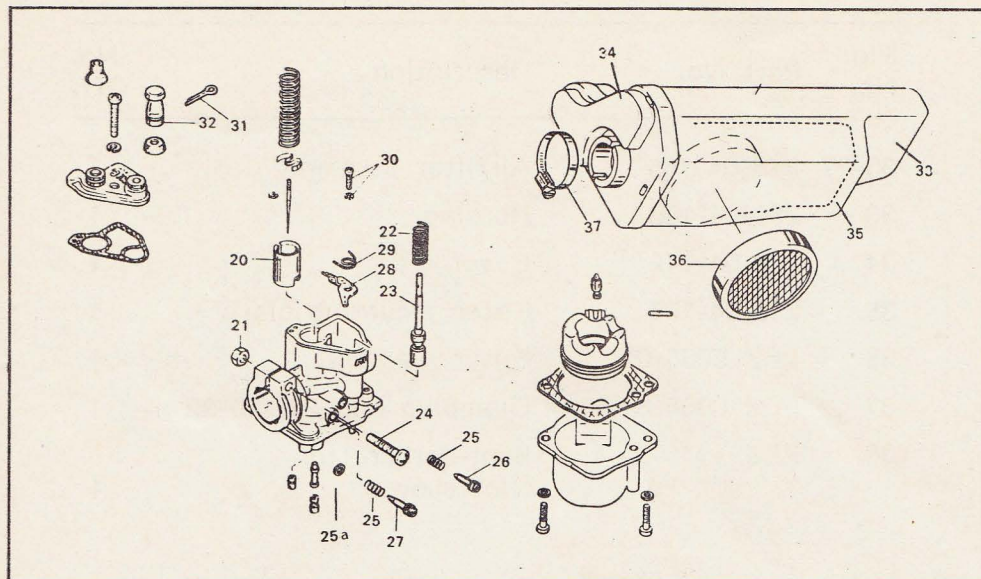


Fig No.	Part No.	Description	No. Off.
20	PEZ 1156	Slide	1
21	PEZ 1151	Hex. nut M 6	1
22	PEZ 1163	Choke spring	1
23	PEZ 1162	Choke plunger	1
24	PEZ 1149	Philips screw	1
25	PEZ 1146	Spring	2
25a	PEZ 1170	Washer	1
26	PEZ 1145	Idling screw	1
27	PEZ 1157	Air screw	1
28	PEZ 1168	Choke release plate	1
29	PEZ 1167	Choke hair spring	1
30	PEZ 1169	Philips screw with washer	1
31	PEZ 1165	Split pin 1.6 x 14	1
32	PEZ 1166	Choke knob	1

Fig No.	Part No.	Description	No. Off.
33-37	278-04-765	Airfilter assembly	1
33	250-04-106	Housing	1
34	278-04-142	Cover	1
35	250-04-105	Filter mounting plate	1
36	PEZ 5085-01	Filter element	1
37	PEZ 0985-31	Clamping clip HL 20-32	1
38.	PEZ 1346-30-4	Boot-carburettor (Not shown)	1

MAIN DRIVE SHAFT - CLUTCH BELL

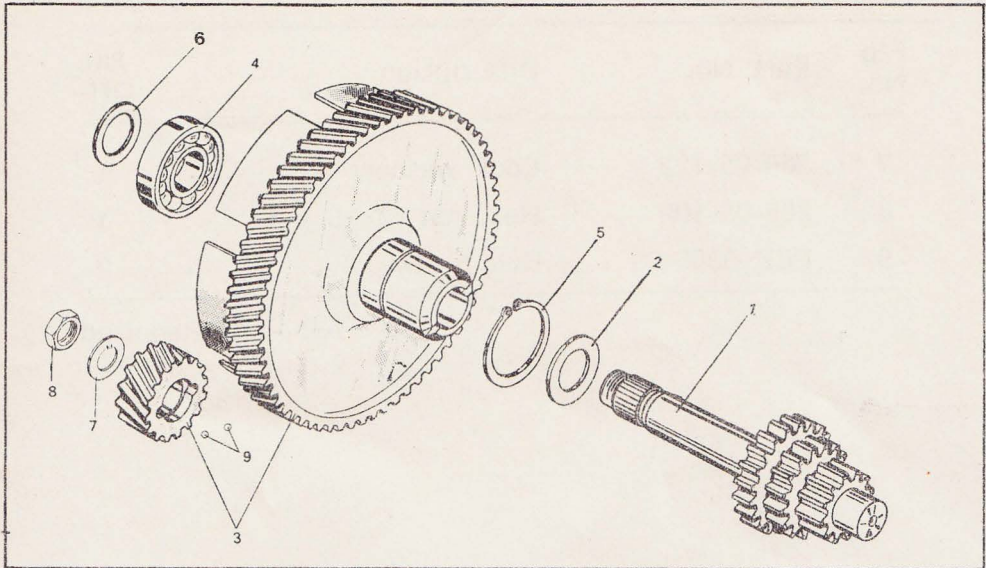


Fig No.	Part No.	Description	No. Off.
1	266-05-157	Gear main shaft	1
2	276-05-108	Main drive shaft distance washer 15.1 x 24 x 1	1
	276-05-110	Main drive shaft distance washer 15.1 x 24 x 1.5	AR
3-4	283-05-900	Clutch bell with bearing and crank shaft pinion	1
4	PEZ 0988-28	Ball bearing 6002 15 x 32 x 9	1
5	PEZ 0543-22	Circlip 25 x 1.2	1
6	280-05-174	Clutch pinion shim 15.1 x 21 x 0.1	AR
	280-05-172	Clutch pinion shim 15.1 x 21 x 0.2	AR
	280-05-173	Clutch pinion shim 15.1 x 21 x 0.5	AR
	280-05-171	Clutch pinion shim 15.1 x 21 x 0.8	AR

Fig No.	Part No.	Description	No. Off.
7	265-05-122	Lock washer	1
8	265-05-302	Hex. nut M 15 x 1	1
9	PEZ 0905-28	Ball 5 MM	2

AR - As Required

GEAR SHIFT LEVER - SHIFT FORK ASSEMBLY - SELECTOR SHAFT

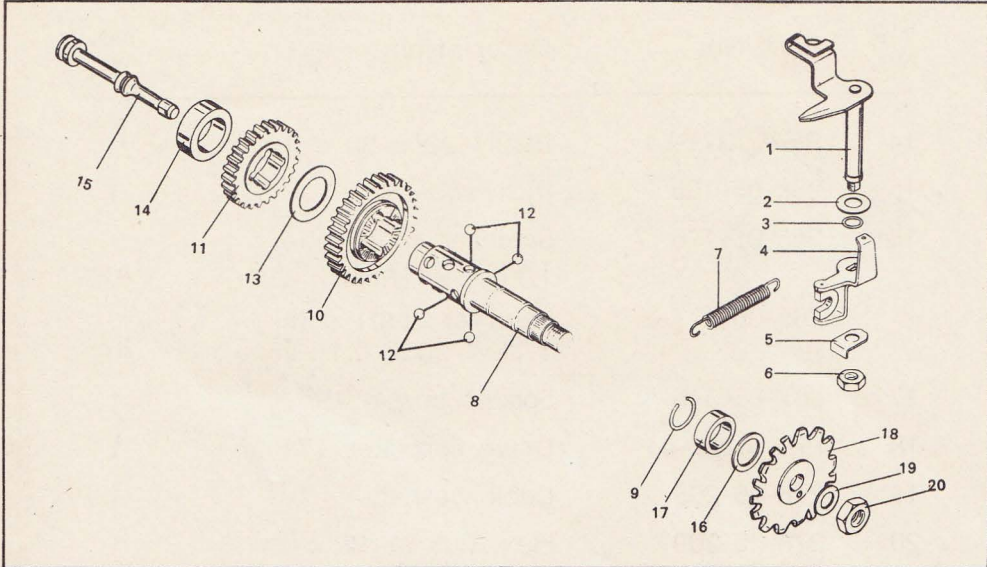


Fig No.	Part No.	Description	No. Off.
1	278-05-610	Gear shift lever	1
2	278-05-165	Gear Shaft lever washer 9.2 x 18 x 1.5	1
	PEZ 1173-18	Washer 11 x 18 x 0.5	AR
3	265-05-252	'O' ring	1
4	265-05-613	Shift fork assembly	1
5	265-05-184	Lock plate	1
6	PEZ 0838-14	Hex. nut M 7	1
7	265-05-118	Tension spring	1
8	278-05-207	Gear shift shaft	1
9	265-05-181	Spring washer	1
10	267-05-359	Gear wheel 371	1
11	266-05-113	Gear wheel 311	1
12	278-05-101	Ball 7 mm	8
13	265-05-255	Gear shin 22.1 x 32 x 0.2	AR
	265-05-256	Gear shim 22.1x32x0.1	AR

Fig No.	Part No.	Description	No. Off.
14	PEZ 1321-01	BUSH 22 x 30 x 10	1
15	265-05-105	Push rod	1
16	265-05-176	Selector shaft shim 17.1 x 23 x 0.2	AR
	265-05-177	Selector shaft shim 17.1 x 23 x 0.1	AR
17	267-05-549	Spacer bush	1
18	PEZ 0232-01	Drive sprocket 171	1
19	278-05-208	Lock washer	1
20	278-05-209	Hex. nut M 12 x 1	1

AR - As Required

KICK STARTER ASSEMBLY

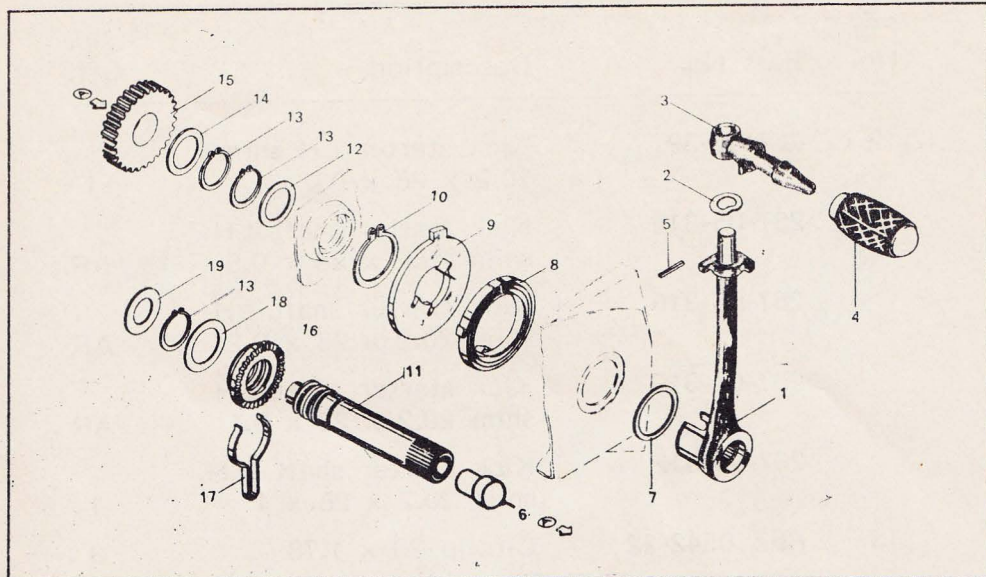


Fig No.	Part No.	Description	No. Off.
1	283-05-155	Kick starter lever	1
2	284-05-106	Spring washer A 10	1
3	283-05-168	Kick starter arm	1
4	280-05-175	Kick starter pedal rubber	1
5	PEZ 0800-26	Spring Dowel 3 x 18	1
6	278-05-198	Sealing plug	1
7	283-05-156	Kick starter lever shim 28.3 x 34 x 0.5	AR
	283-05-157	Kick starter lever shim 28.3 x 34 x 0.9	AR
8	267-05-328	Kick starter spring	1
9	284-05-603	Cover plate Assy.	1
10	PEZ 0544-22	Circlip 28 x 1.5	1
11	278-05-176	Kick starter shaft	1

Fig No.	Part No.	Description	No. Off.
12	267-05-321	Kick starter LH shim 20.2 x 28 x 03	1
	267-05-313	Kick starter shaft LH shim 20.2 x 28 x 0.5	AR
	267-05-315	Kick starter shaft LH shim 20.2 x 28 x 0.2	AR
	267-05-310	Kick starter shaft LH shim 20.2 x 28 x 0.1	AR
	267-05-312	Kick starter shaft L.H. shim 20.2 x 28 x 1	1
13	PEZ 0542-22	Circlip 20 x 1.78	3
14	265-05-203	Spacer washer 20 x 28 x 2	1
15	267-05-176	Kick starter gear 35 T	1
16	267-05-356	Drive dog	1
17	267-05-334	Brake spring	1
18	265-05-225	Kick starter gear shim 22.1 x 32 x 0.2	AR
	265-05-257	Kick starter gear shim 22.1 x 32 x 0.3	1
19	265-05-242	Kick starter RH shim 16.1 x 28 x 0.5	1

AR - As Required

CLUTCH ASSEMBLY

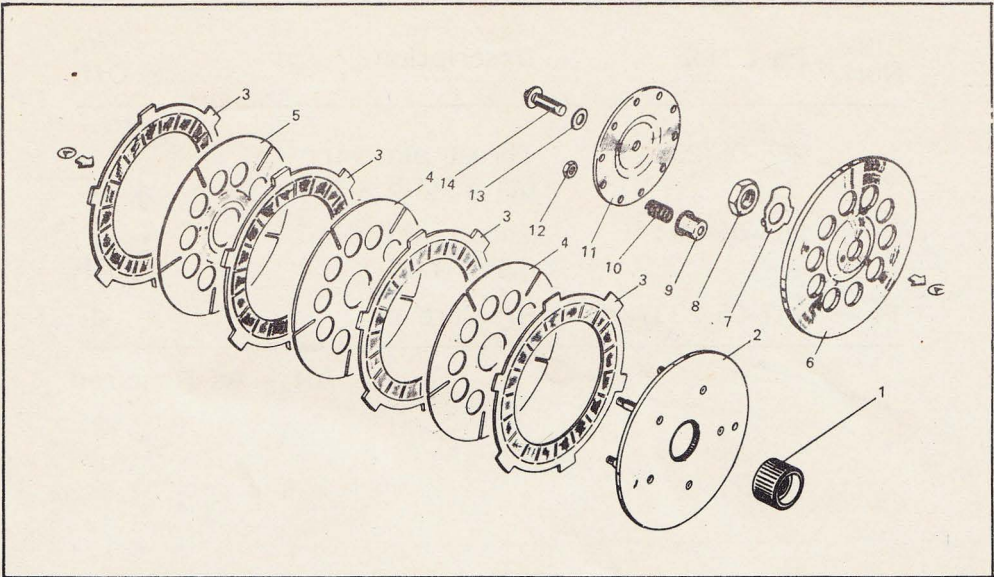


Fig No.	Part No.	Description	No. Off.
1	265-06-201	Clutch pinion	1
2	265-06-606	Support Plate	1
3	PEZ 1318-01	Clutch friction plate (only as a set of 4)	1 set
4	265-06-130	Clutch plate	2
5	265-06-131	Clutch plate (bow)	1
6	265-06-127	Cover plate	1
7	284-06-104	Lock washer	1
8	265-06-202	Hex. nut M 12 x 1	1
9	261-06-155	Spring Sleeve	8
10	281-06-101	Pressure spring	8
11	265-06-216	Pressure plate	1
12	PEZ 0835-14	Hex. nut M 4	5
13	265-05-296	Thrust pin shim 6.1 x 11.8 x 0.8	1

Fig No.	Part No.	Description	No. Off.
	265-05-295	Thrust pin shim 6.1 x 11.8 x 0.4	AR
	265-05-294	Thrust pin shim 6.1 x 11.8 x 0.2	AR
14	247-05-233	Pressure pin	1

AR - As Required

SILENCER ASSEMBLY

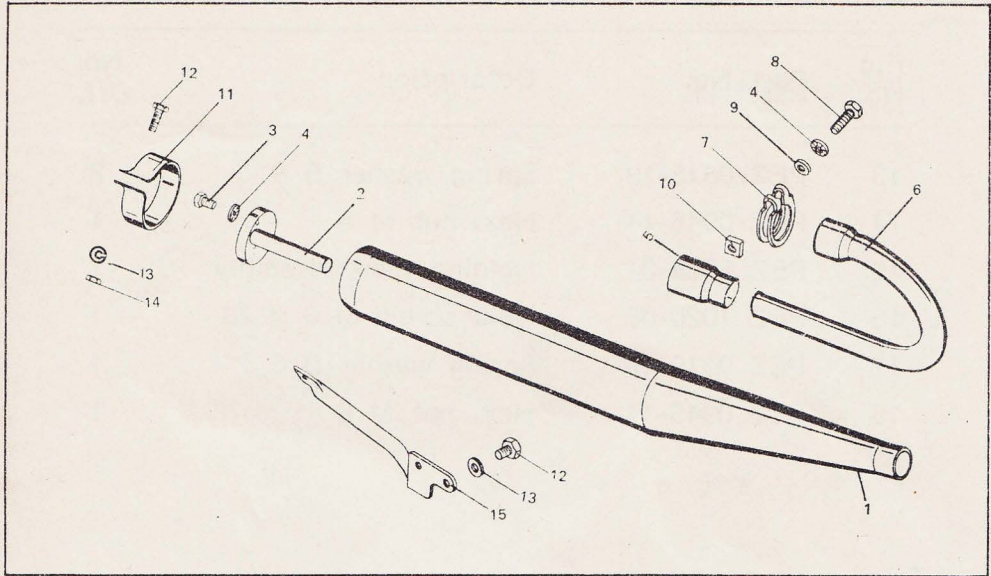


Fig No.	Part No.	Description	No. Off.
1-4	PEZ 5101-01	Silencer assembly	1
1	PEZ 5103-01	Silencer Exhaust Cover	1
2	517-22-630	Exhaust insert assembly	1
3	PEZ 0867-08	Hex. screw M 6 x 10	1
4	PEZ 0995-20	Toothed lock washer A 6.4	2
5	PEZ 5105-30	Sealing bush	1
6	PEZ 5102-01	Exhaust pipe	1
7	441-22-104	Bend pipe clamping ring 34 mm	1
8	PEZ 1015-08	Hex. screw M 6 x 35	1
9	PEZ 0810-18	Washer A 6.4	1
10	PEZ 1035-15	Square nut M 6	1
11	517-22-102	Silencer clamp (large)	1
12	PEZ 0866-08	Hex. screw M 8 x 22	2

Fig No.	Part No.	Description	No. Off.
13	PEZ 0818-19	Spring washer B 8	2
14	PEZ 0946-14	Hex. nut M 8	1
15	PEZ 5054-01	Holding tube assembly	1
16	PEZ 1020-08	Hex. screw M 6 x 20	1
17	PEZ 0819-19	Spring washer B 6	1
18	PEZ 0945-14	Hex. nut M 6	1

FRAME - ENGINE FAIRING - STEERING LOCK AND KEY - STEERING BEARING ASSEMBLY

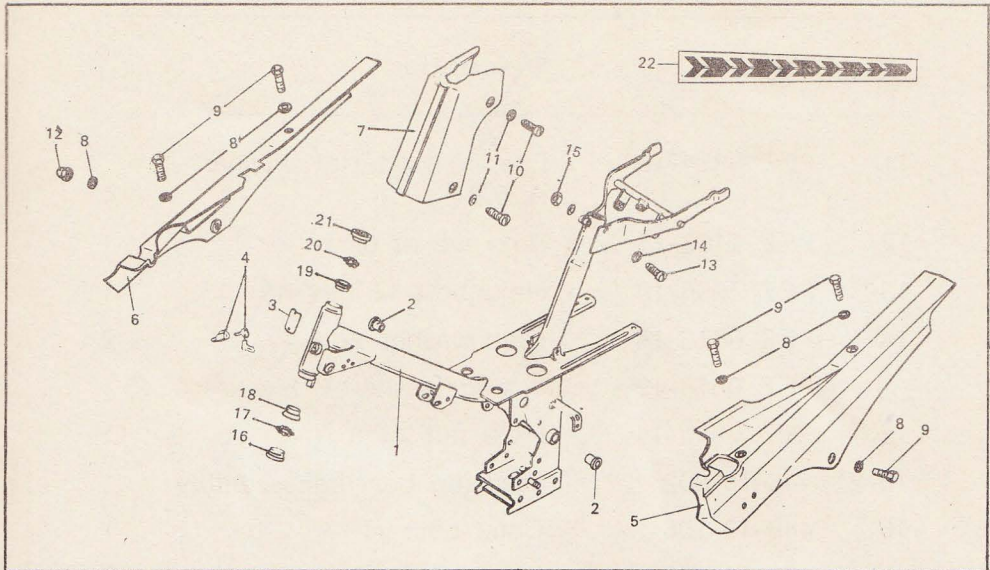


Fig No.	Part No.	Description	No. Off.
1	PEZ 1512-01	Frame assembly	1
2	434-10-129	Swing arm mounting bush	2
3	PEZ 0478-01	Name plate	1
	PEZ 1070-27	Hammer drive screw 2x4.8	2
4	529-10-180	Steering lock and key	1
	517-10-227	Compression spring steering lock	1
5	PEZ 1355-01	Engine fairing LH	1
6	PEZ 1351-01	Engine fairing RH	1
7	PEZ 0008-01	Frame hood	1
8	PEZ 0824-18	Engine fairing flat washer A 6.4	6
9	PEZ 0861-08	Hex. screw M6 x 12	4
	PEZ 0845-08	Hex. scrw M6 x 16	1
10	PEZ 1106-10	Star head screw AM5x10	4
	PEZ 0856-08	Hex. bolt	4

Fig No.	Part No.	Description	No. Off.
11	PEZ 0814-18	Frame hood flat washer A 5.3	4
12	PEZ 1105-17	Box nut M 6	1
13	PEZ 1096-18	Hex. bolt M 8 x 45	1
14	PEZ 0813-18	Flat washer A 8.4	2
	PEZ 0818-19	Spring washer B 8	1
15	PEZ 0946-14	Hex. nut M 8	1
16-21	448-13-802	Steering bearing assembly	1
16	448-13-106	Cone bottom	1
17	423-13-157	Ball cage bottom 3/16"	1
18	448-13-105	Head tube ball race bottom	1
19	400-13-100	Head tube Ball race top	1
20	460-13-103	Ball cage top 5/32"	1
21	561-13-109	Adjusting ring	1
22	460-10-109	Fairing sticker	2
23	PEZ 5039-32	Sleeve - sheet metal look housing	1
24	PEZ 1345-01	Protective plate - Airfilter	1
25	PEZ 5084-32	Strap	2
26	PEZ 1499-01	Support Bracket assembly LH	1
27	PEZ 1553-01	Support Bracket assembly RH	1
28	PEZ 1555-32	Beading - Fairing LH	2
29	PEZ 1556-32	Beading - Fairing RH	1

ENGINE MOUNTING BRACKET

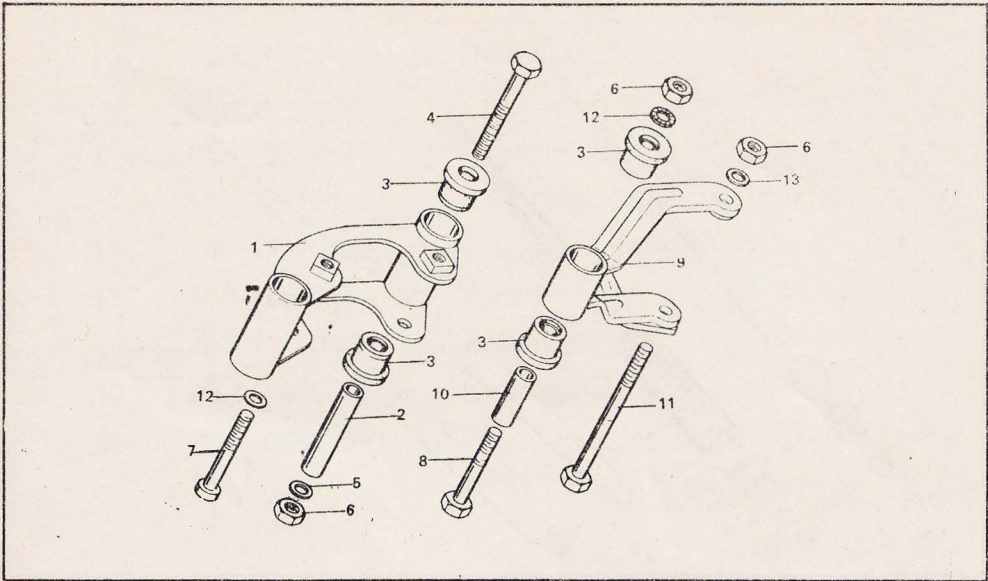


Fig No.	Part No.	Description	No. Off.
1	446-18-601	Engine suspension assembly	1
2	446-18-105	Tube	2
3	247-01-139	Rubber bush	6
4	PEZ 0849-08	Hex. bolt M 8 x 75	2
5	PEZ 0818-19	Spring washer B 8	5
6	PEZ 0946-14	Hex. nut M 8	4
7	PEZ 1104-09-60	Allen bolt M 8 x 55	2
8	PEZ 0854-08	Hex. bolt M 8 x 60	1
9	460-18-600	Engine suspension assembly	1
10	446-18-103	Spacer pipe	1
11	PEZ 1103-08	Hex. bolt M 8 x 105	1
12	PEZ 0825-20	Toothed washer A 8.4	1
13	PEZ 0813-18	Engine mounting bracket (front) flat washer A 8.4	1

FRONT SUSPENSION

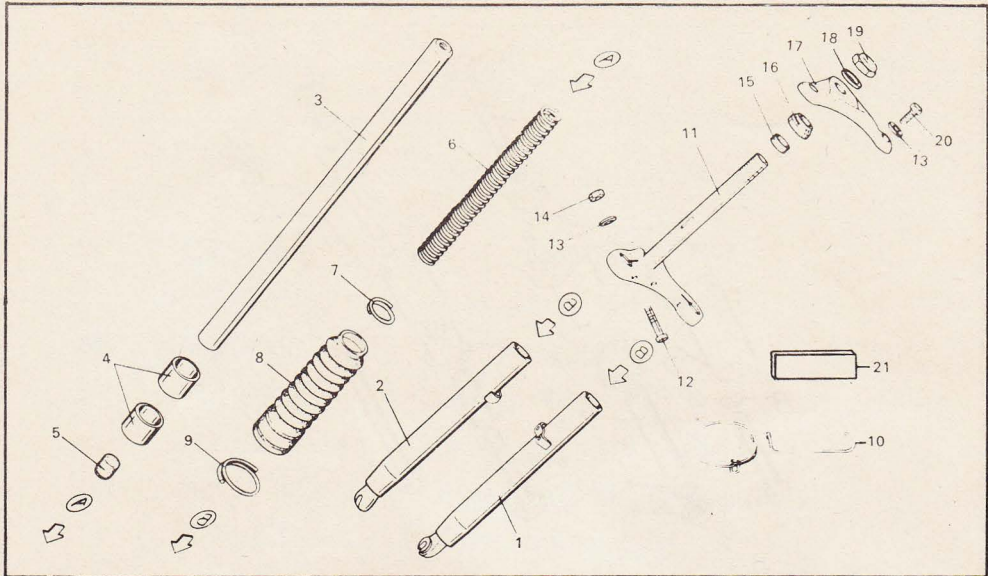


Fig No.	Part No.	Description	No. Off.
1	PED 5716-01	Bottom tube L.H.	1
2	PED 5715-01	Bottom tube R.H.	1
3	PEZ 0053-01	Main tube	2
4	PED 5718-01	Guide bush	4
5	PED 5732-30	Buffer	2
6	PED 5731-01	Spring Front fork	2
7	PED 5734-01	Wire clamp-upper	2
8	PEZ 0036-30	Bellows	2
9	PED 5735-01	Wire Clamp-lower L.H.	1
10	PED 5736-01	Wire-Clamp-lower R.H.	1
11	PEZ 0218-01	Bottom crown plate assembly bottom	1
12	PEZ 1108-08	Hex. bolt M 8 x 50	2
13	PEZ 0813-18	Flat washer A 8.4	6
14	PEZ 0946-14	Hex. nut M 8	2

Fig No.	Part No.	Description	No. Off.
15	PEZ 0037-01	Intermediate ring	1
16	448-13-106	Ball race cover bottom	1
17	460-12-101	Top crown plate	1
18	460-12-102	Washer	1
19	460-12-103	Cap nut	1
20	PEZ 0869-08	Hex. screw M 8 x 25	2
21	PEZ 0382-01	Front number plate assembly	1

HANDLE BAR - HANDLE BAR CLAMP -
REAR VIEW MIRROR

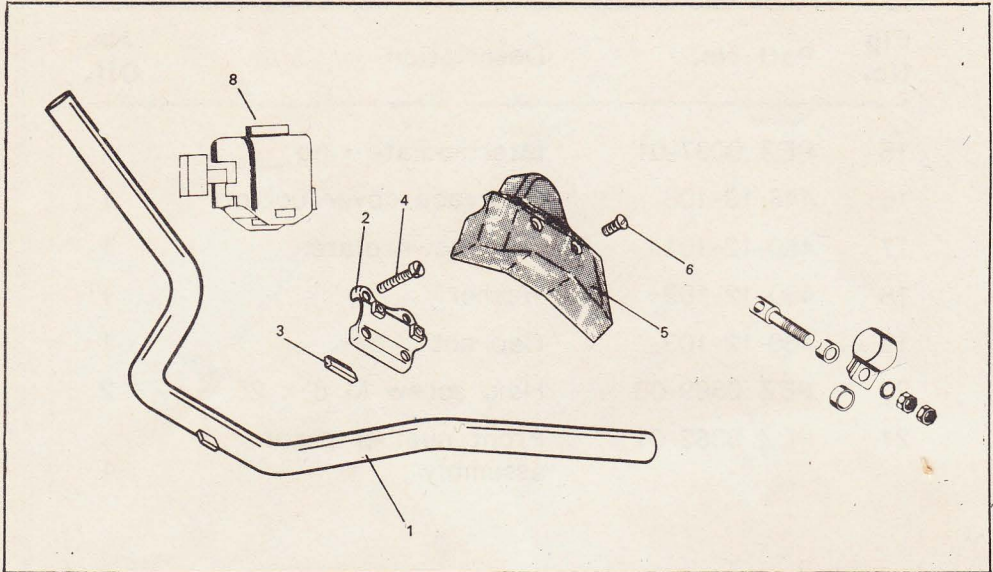


Fig No.	Part No.	Description	No. Off.
1	442-13-114	Handle bar	1
2	460-13-600	Handle bar clamp	1
3	444-13-102	Stopper	1
4	PEZ 0135-13	Special hex. bolt M 6	4
5	460-13-105	Cover	1
6	PEZ 1107-12	Star head screw M 5 x 18	2
7	PEZ 0175-31	Rear view mirror assembly	1
8	PEZ 1284-29	Switch assembly complete	1

REAR - SUSPENSION - FOOT REST

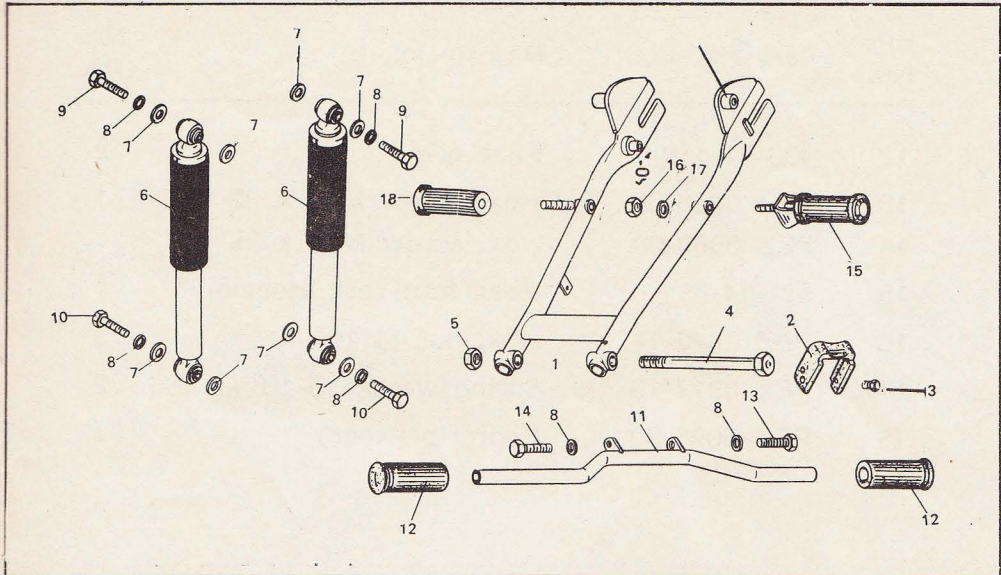


Fig No.	Part No.	Description	No. Off.
1	460-14-600	Chain stay (Old design)	1
	PEZ 5094-01	Chain stay (one side Fixed foot rest)	1
2	446-14-127	Chain pad	1
3	PEZ 1072-27	Hammer Drive screw 8 x 12.5	2
4	460-14-101	Hex. bolt M 12 x 1.5 x 157	1
5	PEZ 1118-14	Hex. nut M 12 x 1.5	1
6	PEZ 0609-01	Shock absorber	2
7	PEZ 0975-18	Shock absorber flat washer	10
8	PEZ 0818-19	Spring washer B 8	6
9	PEZ 1119-08	Hex. bolt M 8 x 55	2
10	PEZ 0855-08	Hex. bolt M 8 x 40	2
11	PEZ 0229-01	Foot rest tube assembly	1

Fig No.	Part No.	Description	No. Off.
12	433-14-119	Foot grip	2
13	PEZ 0866-08	Hex. screw M 8 x 22	1
14	PEZ 0869-08	Hex. screw M 8 x 25	1
15	521-14-611	Rear foot rest assembly	1
16	PEZ 0840-14	Hex. nut M 10	2
17	PEZ 0817-19	Spring washer B-10	2
18	PEZ 5095-30	Footgrip (Rear)	1

FRONT WHEEL - BRAKE ASSEMBLY 120 MM

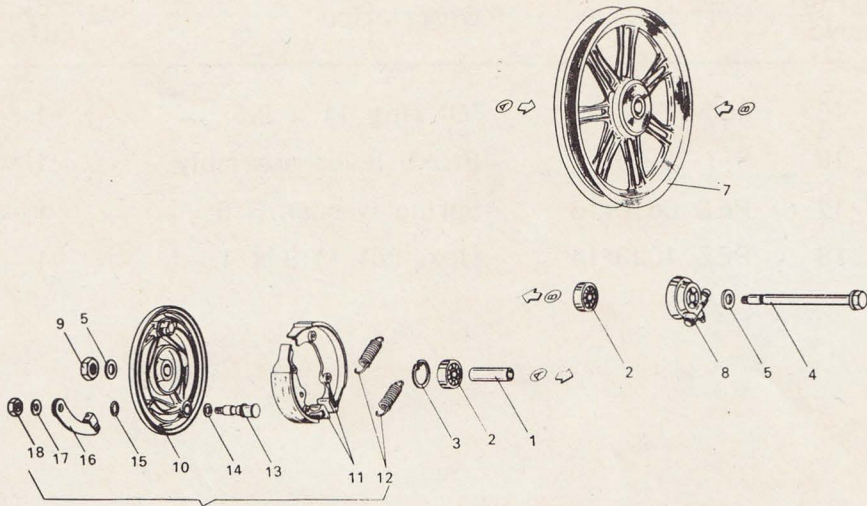


Fig No.	Part No.	Description	No. Off.
1	446-15-149	Spacer tube	1
2	PEZ 0989-28	Ball bearing 6201 Z 12 x 32 x 10	2
3	PEZ 0545-23	Circlip 32 x 1.2	1
4	446-15-151	Front wheel spindle	1
5	PEZ 0987-18	Washer 13	2
7	448-15-650	Front wheel	1
8	PEZ 1216-01	Speedo hub drive	1
9	PEZ 0125-14	Hex. nut M 12 x 1.5	1
10	448-15-605	Front brake cover plate	1
11	PEZ 1317-01	Brake shoe with lining (only as a pair)	1 pair
12	517-15-217	Brake shoe spring	2
13	561-15-620	Brake cam assembly	1
14	267-05-597	Brake cam flat washer 11.2 x 17 x 0.2	1

Fig No.	Part No.	Description	No. Off.
15	405-15-388	'O' ring 11 x 2.5	1
16	517-15-638	Brake lever assembly	1
17	PEZ 0818-19	Spring washer B 8	1
18	PEZ 1023-14	Hex. nut M 8 x 1	1

REAR WHEEL - BRAKE ASSEMBLY 120 MM - SPOCKET

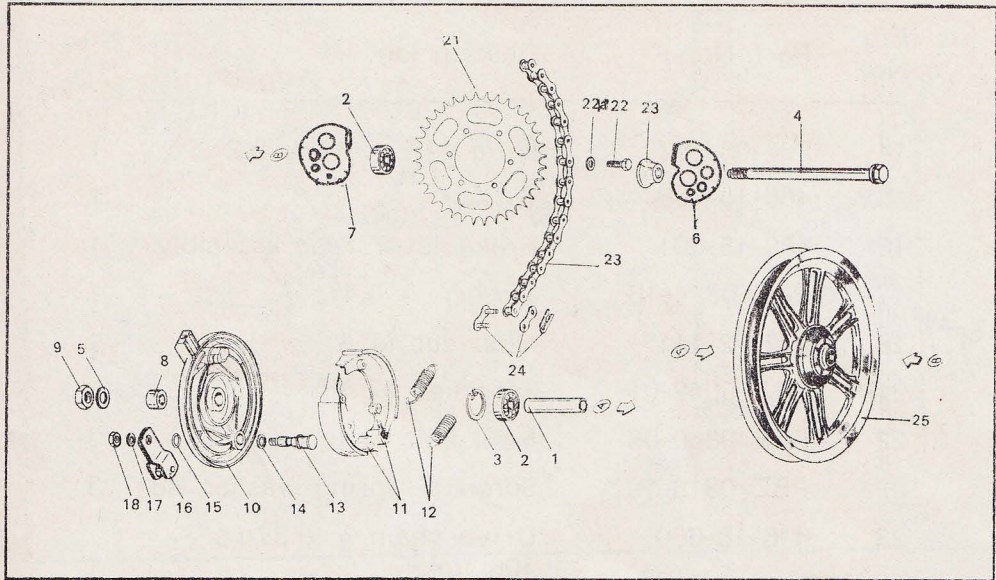


Fig No.	Part No.	Description	No. Off.
1	446-15-152	Spacer Tube	1
2	PEZ 0989-28	Wheel bearing 6201 Z 12 x 32 x 10	2
3	PEZ 0545-23	Circlip 32 x 1.2	1
4	446-15-163	Rear wheel spindle	1
5	PEZ 0987-18	Wheel spindle flat washer 13	2
6	447-15-101	Chain tensioner R.H.	1
7	447-15-100	Chain tensioner L.H.	1
8	446-15-153	Spacer bush	1
9	PEZ 1025-14	Hex. nut M 12 x 1.5	1
10	448-15-606	Rear brake cover	1
11	PEZ 1317-01	Brake shoe with lining (set of 2)	1
12	517-15-127	Brake shoe spring	2
13	460-15-602	Brake cam assembly	1

Fig No.	Part No.	Description	No. Off.
14	267-05-597	Shim 11.2 x 17 x 0.2	1
15	460-15-108	Washer	1
16	460-15-601	Brake lever rear assembly	1
17	PEZ 0824-18	Washer A 6.4	1
18	517-22-111	Hex. nut M 6	1
21	PEZ 5042-01	Sprocket 37 T	1
22	PEZ 0869-08	Hex. bolt M 8 x 25	3
22a	PEZ 0818-19	Sprocket spring washer B8	3
23	446-18-600	Drive chain $\frac{1}{2}$ x 3/16" 106 links	1
24	432-18-900	Connecting link	1
25	448-15-651	Rear wheel	1

HEAD LAMP BRACKET - A/C HORN

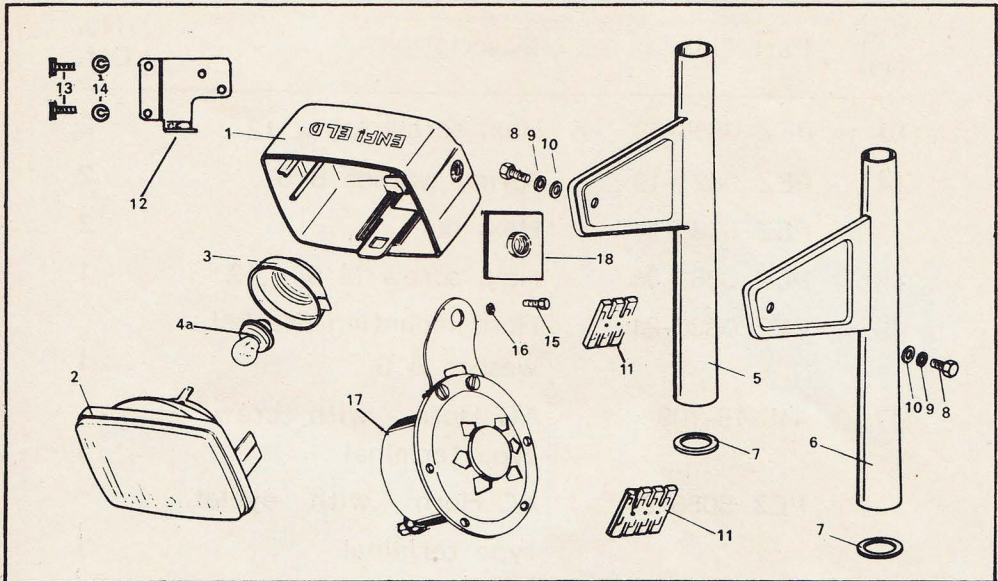


Fig. No.	Part No.	Description	No. Off.
1-4	460-16-722	Head lamp assembly	1
1	PEZ 0962	Head lamp shell	1
2	PEZ 0958	Sealed beam	1
3	PEZ 0960	Dust cap	1
4	PEZ 0959	Bulb holder	1
4a	PEZ 0997-29	Bulb 6V, 25/25W	1
5	460-16-614	Head lamp bracket RH	1
6	460-16-613	Head lamp bracket LH	1
7	PEZ 0115-30	Spacer rubber	2
8	PEZ 1022-08	Hex. screw M 8 x 20	2
9	PEZ 0818-19	Spring washer B 8	2
10	PEZ 0813-18	Washer A 8.4	2
11	517-16-313	3 pole cable connector	1
	517-16-286	4 pole cable connector	1
12	446-16-633	Mounting bracket	1

Fig No.	Part No.	Description	No. Off.
13	PEZ 0856-08	Hex. screw M5 x 12	2
14	PEZ 0821-19	Spring washer B 5	2
	PEZ 0836-14	Hex. nut	2
15	PEZ 0861-08	Hex. screw M 6 x 12	1
16	PEZ 0830-21	Horn mounting bracket washer B 6	1
17	446-16-709	AC Horn - with screw type terminal	1
	PEZ 5086-29	AC Horn - with eyelet type terminal	1
18	PEZ 0961	Nut plate	2

COCKPIT

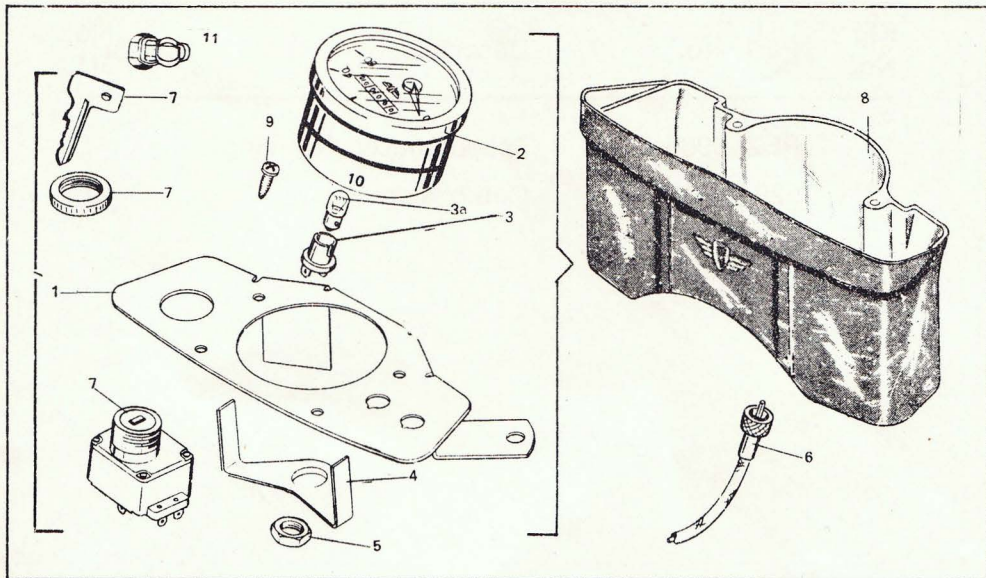


Fig No.	Part No.	Description	No. Off.
1	460-16-611	Cockpit panel	1
2-5	PEZ 0672-01	Speedometer assembly	1
3	PEZ 0963	Speedometer bulb holder	1
3a	PEZ 0964	Speedometer bulb	1
4	PEZ 0948	Speedometer mounting bracket	1
5	PEZ 0949	Hex. lock nut	1
6	519-16-668	Speedometer cable assembly	1
7	530-16-790	Ignition switch assembly	1
8	PEZ 0769-29	Indicating lamp blue -Optional	1
9	517-16-372	Cockpit housing	1
10	PEZ 1114-12	Star head screw BZ 4.8 x 13	4

Fig No.	Part No.	Description	No. Off.
11	PEZ 0965-30	Speedometer 'O' ring	1
12	529-16-121	Cable sleeve	1

BRAKE PEDAL ASSEMBLY - STOP LIGHT SWITCH

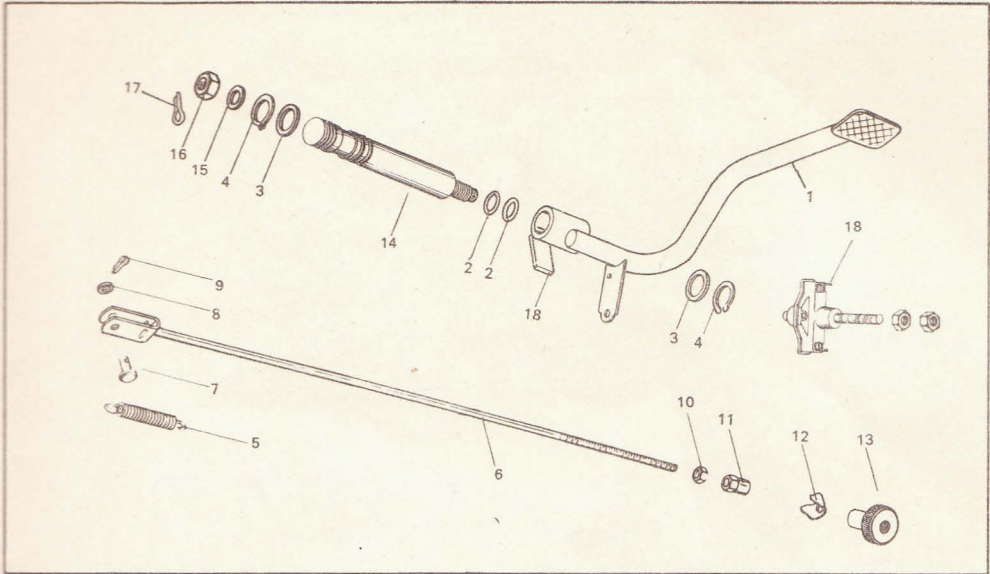


Fig No.	Part No.	Description	No. Off.
1	460-17-604	Brake pedal assembly	1
2	220-04-131	'O' ring 13 x 2	2
3	265-05-179	Brake pedal shim 17.1 x 23 x 0.8	2
4	PEZ 0541-22	Circlip 17 x 1	2
5	446-17-117	Tension spring	1
6	448-17-601	Brake rod assembly	1
7	PEZ 1098-27	Clevis pin 6H 11 x 14 x 11.5	1
8.	PEZ 0810-18	Brake rod flat washer A 6.4	1
9	PEZ 1099-25	Split pin 1.6 x 8	1
10	PEZ 0945-14	Hex. nut M 6	3
11	512-17-100	Special nut	1
12	433-17-100	Lock plate	1
13	448-17-125	Knurled nut	1

Fig No.	Part No.	Description	No. Off.
14	460-17-101	Bearing spindle	1
15	PEZ 0984-21	Washer B 10	1
16	PEZ 0842-14	Hex. nut M 10 x 1	1
17	PEZ 1026-25	Split pin 2 x 18	1
18	517-16-113	Brake light switch	1

THROTTLE CONTROL - GEAR CHANGE ASSEMBLY - CABLE ASSEMBLY

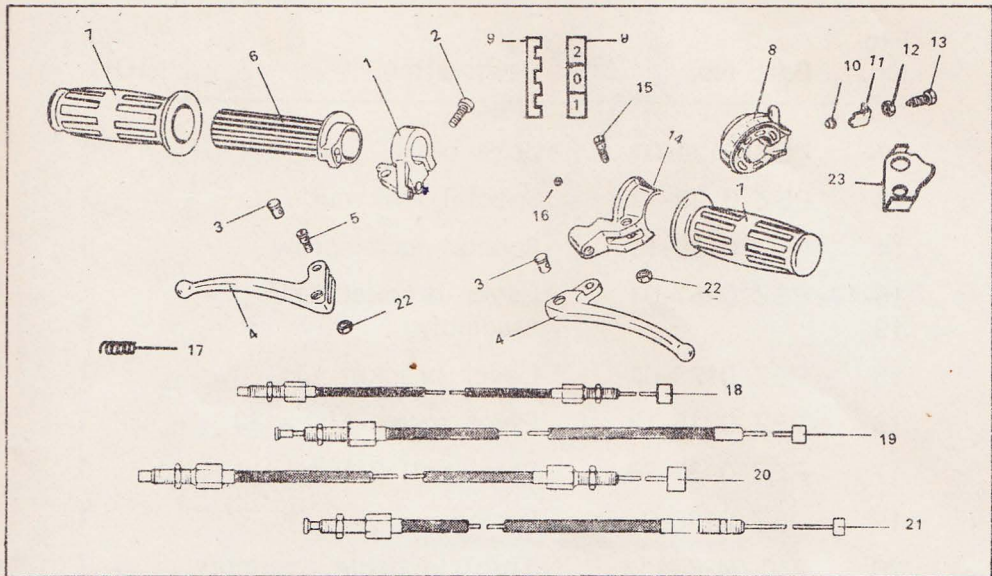


Fig No.	Part No.	Description	No. Off.
1	PEZ 0116-01	Lever bracket RH	1
2	PEZ 0879-09	Allen screw M 6 x 16	1
3	428-17-115	Soldered Nipple attachment	2
4	PEZ 0117-01	Handlever	2
5	PEZ 0715-13	Pivot screw M 5 x 20	1
6	PEZ 0118-32	Accelerator Tube	1
	PEZ 0119-01	Leaf spring	1
7	PEZ 0127-30	Hand grip	2
8-14	PEZ 0966-01	Gear change housing assembly	1
8	PEZ 0121-01	Gear change housing	1
9	PEZ 0134-01	Display segment	1
10	PEZ 0122-01	Guide segment	1
11	PEZ 0133-01	Lock screw rest	1

Fig No.	Part No.	Description	No. Off.
12	PEZ 0124-01	Lock plate	1
13	PEZ 0125-19	Special lock nut	1
14	PEZ 0126-13	Special lock screw	1
15-17-19	PEZ 0957-01	Lever bracket LH/assembly	1
15	PEZ 0123-01	Lever bracket LH	1
16	PEZ 0716-13	Pivot screw M5 x 23	1
17	PEZ 0131-28	Steel ball 3/16"	1
18	PEZ 0130-01	Spring	1
20	250-04-604	Throttle cable assembly	1
21	446-17-645	Front brake cable assembly	1
22	446-17-609	Gear cable assembly	1
23	446-17-605	Clutch cable assembly	1
24	PEZ 1027-16	Self Locking Nut	2
25	PEZ 0129-01	Arrester	1

MUDGUARD FRONT AND REAR - TAIL LAMP

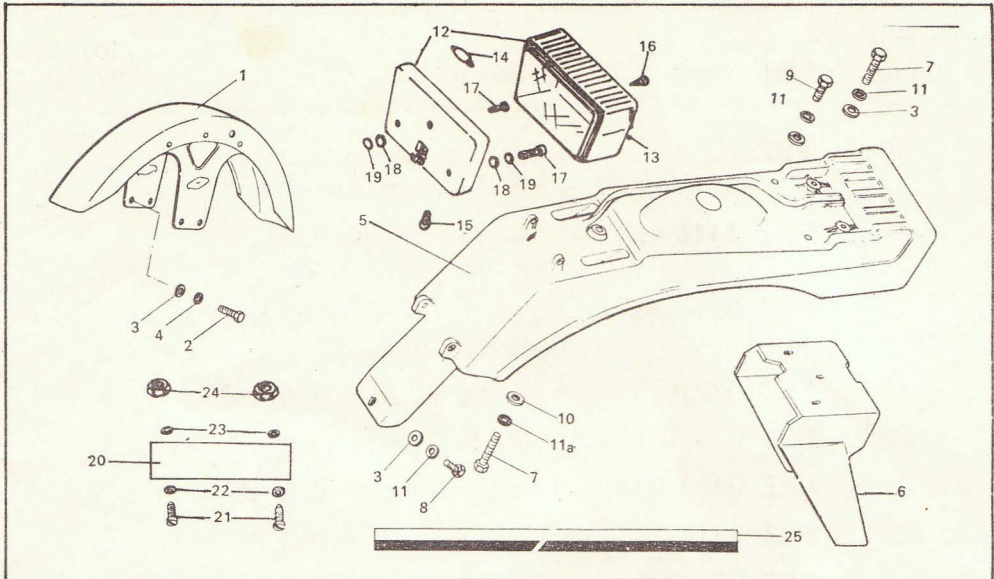


Fig No.	Part No.	Description	No. Off.
1	PEZ 0009-01	Front mudguard	1
2	PEZ 0845-08	Hex. screw M 6 x 16	4
3	PEZ 0824-18	Washer A 6.4	8
4	PEZ 0819-19	Spring washer B 6	4
5	PEZ 0019	Rear mudguard assembly	1
6	PEZ 0012	Rear extension assembly	1
7	PEZ 0845-08	Hex. screw	6
10	400-20-106	Washer A 6.4	1
11	PEZ 0826-20	Toothed washer J 6.4	6
11a	447-19-102	Flat washer 6.2 x 22 x 1	1
12	529-16-1745	Tail lamp assembly	1
13	PEZ 0967	Lens (tail lamp)	1
14	PEZ 1117-29	Brake light bulb 6V-10W	1
15	PEZ 0999-29	Tail light bulb T 8/4 (6V-3W)	1

Fig No.	Part No.	Description	No. Off.
16	PEZ 0968	Slotted raised counter head screw AM 4 x 20	1
17	PEZ 1116-10	Slotted cheese Head screw AM 5 x 20	2
18	PEZ 0814-18	Tail lamp housing flat washer A 5.3	2
19	PEZ 0821-19	Spring washer B 5	2
20	PEZ 0387-01	Number plate rear	1
21	PEZ 0856-08	Hex. screw M 5 x 12	2
22	PEZ 0814-18	Flat washer A 5.3	2
23	PEZ 0994-20	Toothed lock washer A 5	2
24	PEZ 0836-14	Hex. nut M 5	2
25	460-10-109	Sticker (Red & Black)	2
	460-19-113	Sticker (Red & White)	2
	460-19-116	Sticker (Black & White)	2
	PEZ 1079-01	Spacer Tube	2
	PEZ 0814-18	Washer A 5.3	2
	PEZ 1089-08	Hex. bolt M 5 x 30	2

PETROL TANK

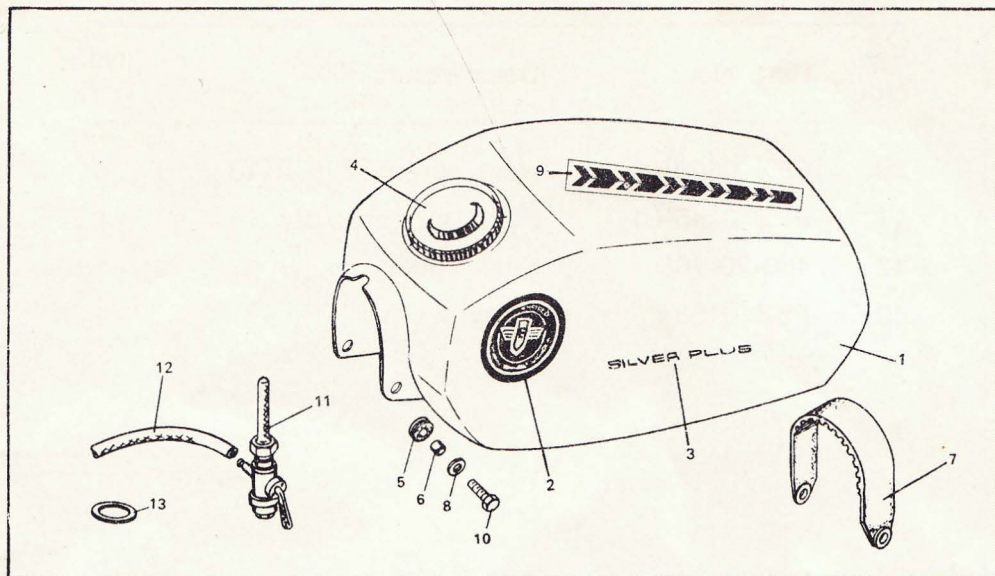


Fig No.	Part No.	Description	No. Off.
1	460-20-602	Petrol tank	1
2	PEZ 0235	Monogram plain	2
	PEZ 0241	Monogram gold	2
3	PEZ 0433	Sticker RH	1
	PEZ 0432	Sticker LH	1
4	460-20-103	Tank cap	1
5	446-20-112	Grammet	2
6	400-20-105	Sleeve 6.5 x 8 x 6.5	4
7	447-20-111	Rubber pad	1
8	400-20-106	Petrol tank flat washer 6.4 x 14 x 1.5	4
9	PEZ 0054-01	Centre sticker	1
	460-19-112	Edge sticker red & white	2
	460-19-108	Edge sticker red & black	2
	460-19-119	Edge sticker black & white	2

Fig No.	Part No.	Description	No. Off.
10	PEZ 0860-08	Hex. screw M 6 x 18	4
11	PEZ 0145-01	Fuel tap assembly	1
12	460-20-106	Fuel line	1
13	PEZ 0158	Fiber washer	1

DUAL SEAT - SEAT FRAME - CENTRE STAND

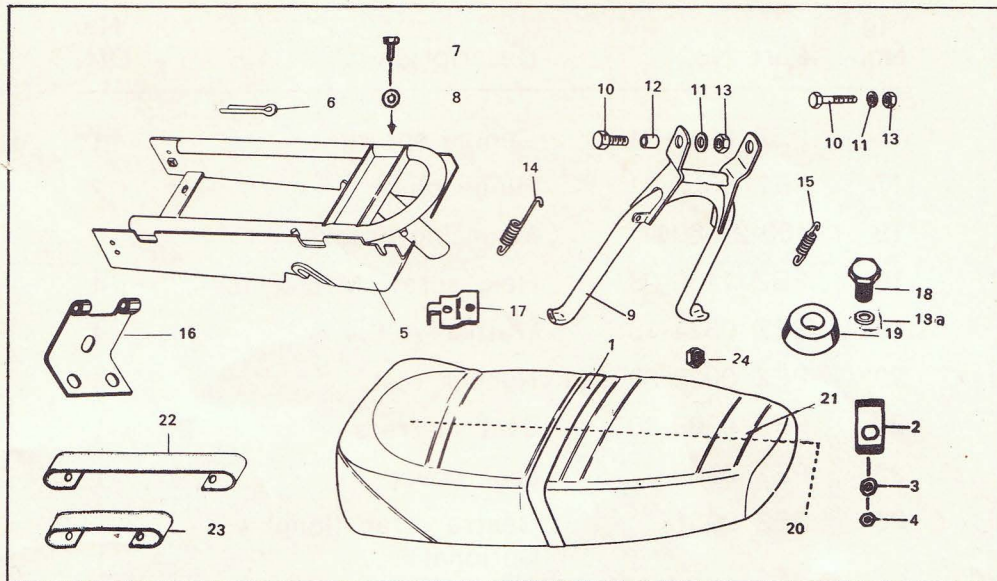


Fig No.	Part No.	Description	No. Off.
1	460-21-707	Dual seat	1
2	446-21-120	Leaf spring	1
3	PEZ 0818-19	Dual seat spring B 8	1
4	PEZ 0946-14	Hex. nut M 8	1
5	460-21-603	Seat frame	1
6	PEZ 1095-25	Split pin 4 x 56	2
7	PEZ 0861-08	Hex. screw M 6 x 12	4
8	PEZ 0834-21	Washer B 6	4
9	460-21-608	Centre stand assembly	1
10	PEZ 0869-08	Hex. screw M 8 x 25	2
11	PEZ 0813-18	Centre stand flat washer A 8.4	2
12	442-21-114	Ring	2
13	561-17-111	Lock nut M 8	2
14	444-21-106	Side spring	1

Fig No.	Part No.	Description	No. Off.
15	PEZ 0242-01	Centre spring	1
17	PEZ 0056-01	Hinge plate	2
18	460-21-604	Mounting bracket	2
19	PEZ 1136-08	Hex. screw M 6 x 15	4
19a	PEZ 0824-18	Washer A 6.4	4
20	PEZ 0028-30	Rubber rest	4
21	PEZ 0399-30	Seat mattress	1
22	PEZ 0400	Seat cover	1
23	PEZ 0051	Centre strap (long) - Optional	1
24	PEZ 0409	Centre strap (short) - Optional	1
25	PEZ 0836-14	Hex. nut M 5 x 1 - Optional	2
26	PEZ 0720	Dual seat spring - Optional	1

LUGGAGE CARRIER

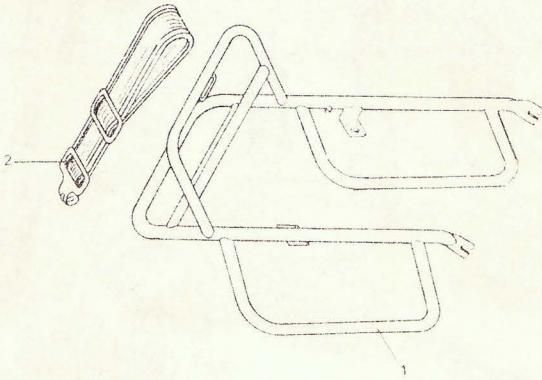


Fig No.	Part No.	Description	No. Off.
1	PEZ 1227-01	Luggage carrier	1
2	448-21-604	Strap - (Optional)	1

MAGNETO ASSEMBLY

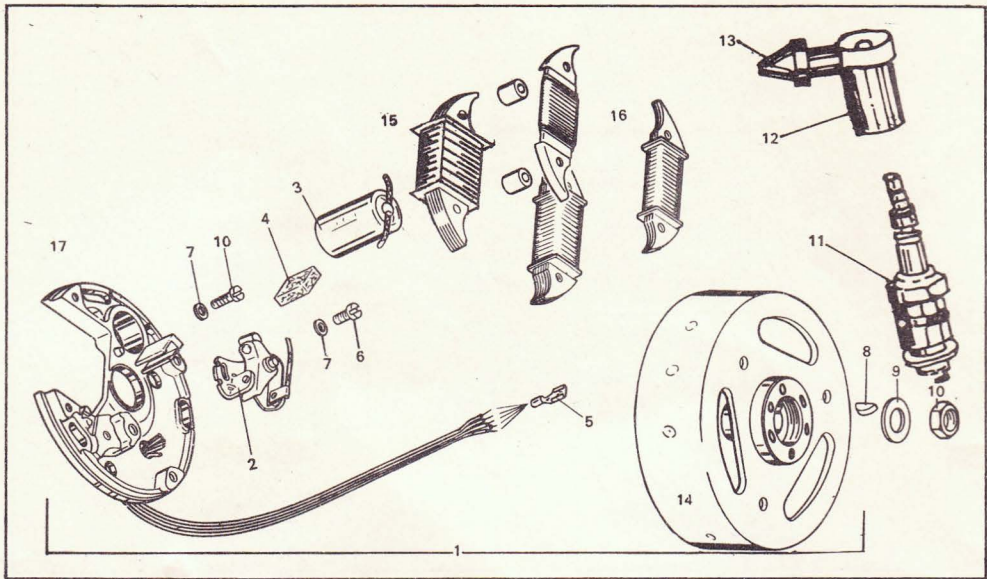


Fig No.	Part No.	Description	No. Off.
1	PEZ 0233-29	Magneto Complete 30-10 Watts	1
2	PEZ 0648	Contact Breaker Assembly Complete	1
3	PEZ 0649	Condenser	1
4	PEZ 0650	Felt	1
5	PEZ 1057-29	Connector 6.3 x 1	4
6	PEZ 0885-10	Slotted Cheesehead Screw Am 4 x 16	2
7	PEZ 0816-18	Washer A 4.3	2
8	PEZ 0930-31	Woodruff Key 3 x 3.7	1
9	PEZ 0983-18	Washer A 10.5	1
10	PEZ 1024-14	Hex. nut M 10 x 1	1
11	280-07-602	Spark Plug	1
12	PEZ 0504-32	Spark Plug Cap	1
13	PEZ 0395-30	Rubber Grommet	1

ET COIL AND WIRING HARNESS

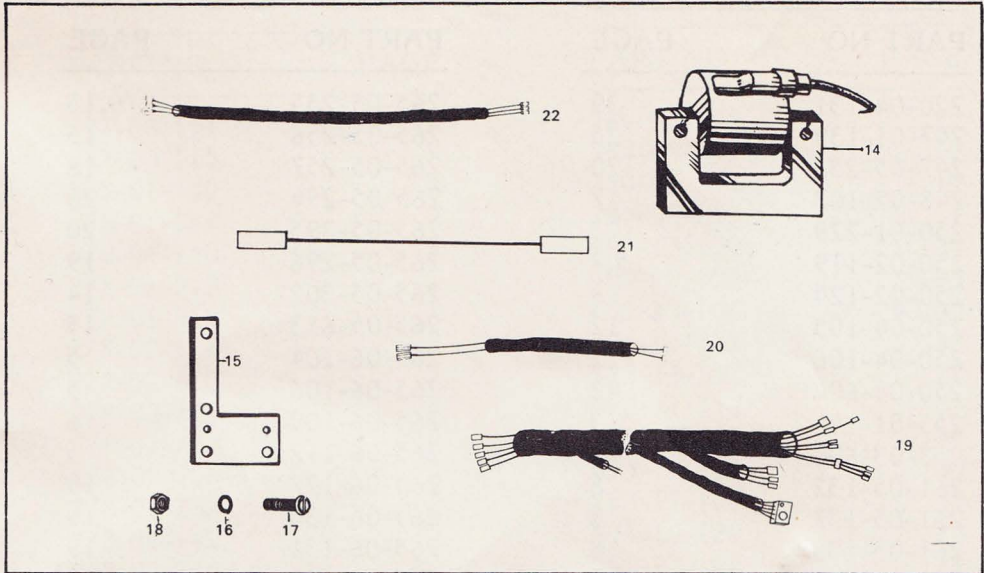


Fig No.	Part No.	Description	No. Off.
14-15	PEZ 0483-01	E.T. Coil Complete with bracket and H.T. lead	1
	PEZ 0505-29	E.T. Coil Complete	1
15	PEZ 0481-01	E.T. Coil bracket	1
16	PEZ 0821-19	Spring washer B.5	2
17	PEZ 1034-08	Hex. screw M 5 x 25	2
18	PEZ 0836-14	Hex. nut M 5	2
19	460-16-626	Main cable wiring harness	1
20	448-16-650	Cable set brake light	1
21	447-16-623	Cable speedometer bulb	1
22	460-16-620	Cable rear light	1

PART NO	PAGE	PART NO	PAGE
220-04-131	39	265-05-255	9,15
247-01-139	25	265-05-256	15
247-05-233	20	265-05-257	18
248-02-107	7	265-05-294	20
250-01-229	3	265-05-295	20
250-02-119	5,8	265-05-296	19
250-02-124	8	265-05-302	14
250-04-105	12	265-05-613	15
250-04-106	12	265-06-104	5
250-04-604	42	265-06-106	5
255-01-144	3	265-06-109	6
258-03-600	8	265-06-112	5
261-05-132	8	265-06-127	19
261-05-137	8	265-06-130	19
261-05-138	8	265-06-131	19
261-05-144	8	265-06-201	19
261-06-155	19	265-06-202	19
265-01-100	1,4	265-06-216	19
265-01-102	3	265-06-602	5
265-01-104	6	265-06-606	19
265-01-108	1	266-05-113	15
265-01-117	2	266-05-157	13
265-01-118	4	267-01-153	3
265-01-135	1	267-05-176	18
265-01-138	4	267-05-310	18
265-02-120	7	267-05-312	18
265-05-105	16	267-05-313	18
265-05-118	15	267-05-315	18
265-05-122	14	267-05-321	18
265-05-175	8	267-05-328	17
265-05-176	8,16	267-05-334	18
265-05-177	8,16	267-05-356	18
265-05-179	8,39	267-05-359	15
265-05-181	15	267-05-549	16
265-05-184	15	267-05-597	31,34
265-05-203	18	276-01-145	2
265-05-225	18	276-02-219	7
265-05-242	18	276-05-108	13
265-05-252	15	276-05-110	13
		277-01-136	1

PART NO **PAGE**

277-03-111	7
277-03-115	8
278-01-140	3
278-01-141	2
278-01-150	5
278-01-913	1
278-01-914	3
278-02-121	7
278-02-610	7
278-02-729	7
278-02-743	7
278-04-102	8
278-04-137	8
278-04-142	12
278-04-765	12
278-04-771	9
278-05-101	15
278-05-165	15
278-05-176	17
278-05-198	17
278-05-207	15
278-05-208	16
278-05-209	16
278-05-610	15
270-03-612	7
280-05-171	13
280-05-172	13
280-05-173	13
280-05-174	13
280-05-175	17
280-07-602	50
281-06-101	19
281-06-114	5
281-06-115	5
283-05-155	17
283-05-156	17
283-05-157	17
283-05-168	17
283-05-900	13
284-01-176	6
284-02-104	7

PART NO **PAGE**

284-05-106	17
284-05-603	17
284-06-104	19
285-01-153	1
400-13-100	24
400-20-105	45
400-20-106	43,45
405-15-388	5,32
423-13-157	24
428-17-115	41
432-18-900	34
433-14-119	30
433-17-100	39
434-10-129	23
441-22-104	21
442-13-114	28
442-21-114	47
444-13-102	28
444-21-106	47
446-14-127	29
446-15-149	31
446-15-151	31
446-15-152	33
446-15-153	33
446-15-163	33
446-16-633	35
446-16-709	36
446-17-117	39
446-17-605	42
446-17-609	42
446-17-645	42
446-18-103	25
446-18-105	25
446-18-600	34
446-18-601	25
446-20-112	45
446-21-120	47
447-15-100	33
447-15-101	33
447-16-623	51
447-19-102	43

PART NO	PAGE	PART NO	PAGE
447-20-111	45	460-20-602	45
448-13-105	24	460-21-603	47
448-13-106	24,27	460-21-604	48
448-13-802	24	460-21-608	47
448-15-605	31	460-21-707	47
448-15-606	33	512-17-100	39
448-15-650	31	517-10-227	23
448-15-651	34	517-15-127	33
448-16-650	51	517-15-217	31
448-17-125	39	517-15-638	32
448-17-601	39	517-16-113	40
448-21-604	49	517-16-286	35
460-10-109	24,44	517-16-313	35
460-12-101	27	517-16-372	37
460-12-102	27	517-22-102	21
460-12-103	27	517-22-111	34
460-13-103	24	517-22-630	21
460-13-105	28	519-16-668	37
460-13-600	28	521-14-611	30
460-14-101	29	529-10-180	23
460-14-600	29	529-16-121	38
460-15-108	34	529-16-1745	43
460-15-601	34	530-16-790	37
460-15-602	33	561-13-109	24
460-16-611	37	561-15-620	31
460-16-613	35	561-17-111	47
460-16-614	35	PED 5715	26
460-16-620	51	PED 5716	26
460-16-625	51	PED 5718	26
460-16-722	35	PED 5731	26
460-17-101	40	PED 5732	26
460-17-604	39	PED 5734	26
460-18-600	25	PED 5735	26
460-19-108	45	PED 5736	26
460-19-109	44	PEZ 0008	23
460-19-112	45	PEZ 0009	43
460-19-113	44	PEZ 0012	43
460-19-116	44	PEZ 0019	43
460-19-119	45	PEZ 0028	48
460-20-103	45	PEZ 0036	26
460-20-106	46	PEZ 0037	27
		PEZ 0051	48

PART NO	PAGE	PART NO	PAGE
PEZ 0053	26	PEZ 0478	23
PEZ 0054	45	PEZ 0481	51
PEZ 0056	48	PEZ 0483	51
PEZ 0115	35	PEZ 0504	50
PEZ 0116	41	PEZ 0505	51
PEZ 0117	41	PEZ 0541	39
PEZ 0118	41	PEZ 0542	18
PEZ 0119	41	PEZ 0543	13
PEZ 0121	41	PEZ 0544	17
PEZ 0122	41	PEZ 0545	31,33
PEZ 0123	42	PEZ 0609	29
PEZ 0124	42	PEZ 0648	50
PEZ 0125	31,42	PEZ 0649	50
PEZ 0126	42	PEZ 0650	50
PEZ 0127	41	PEZ 0661	3
PEZ 0129	42	PEZ 0672	37
PEZ 0130	42	PEZ 0715	41
PEZ 0131	42	PEZ 0716	42
PEZ 0133	41	PEZ 0720	48
PEZ 0134	41	PEZ 0769	37
PEZ 0135	28	PEZ 0796	5
PEZ 0145	46	PEZ 0799	5
PEZ 0158	46	PEZ 0800	17
PEZ 0175	28	PEZ 0801	4
PEZ 0218	26	PEZ 0809	8
PEZ 0229	29	PEZ 0810	21,39
PEZ 0232	16	PEZ 0813	24,25,26,35,47
PEZ 0233	50	PEZ 0814	24,44
PEZ 0235	45	PEZ 0816	50
PEZ 0241	45	PEZ 0817	30
PEZ 0242	48	PEZ 0818	22,24,29,32, 34,35,47
PEZ 0382	27	PEZ 0819	21,43
PEZ 0387	44	PEZ 0821	36,44,51
PEZ 0395	50	PEZ 0824	23,34,43,48
PEZ 0399	48	PEZ 0825	25
PEZ 0400	48	PEZ 0826	43
PEZ 0409	48	PEZ 0827	4,5
PEZ 0415	8	PEZ 0828	5
PEZ 0432	45	PEZ 0830	36
PEZ 0433	45		

PART NO	PAGE
PEZ 0834	47
PEZ 0835	19
PEZ 0836	36,44,48,51
PEZ 0838	7,15
PEZ 0840	30
PEZ 0842	6, 40
PEZ 0845	23,43
PEZ 0846	4
PEZ 0849	25
PEZ 0854	25
PEZ 0855	29
PEZ 0856	23,38,44
PEZ 0860	46
PEZ 0861	23,36,47
PEZ 0866	21,30
PEZ 0867	21
PEZ 0869	27,30,34,47
PEZ 0879	41
PEZ 0881	5
PEZ 0882	2
PEZ 0883	2
PEZ 0885	50
PEZ 0886	6
PEZ 0892	5
PEZ 0898	6
PEZ 0905	14
PEZ 0908	3
PEZ 0930	50
PEZ 0945	8,22
PEZ 0946	22,24,25,26,47
PEZ 0948	37
PEZ 0949	37
PEZ 0957	42
PEZ 0958	35
PEZ 0959	35
PEZ 0960	35
PEZ 0961	36
PEZ 0962	35
PEZ 0963	37
PEZ 0964	37
PEZ 0965	38

PART NO	PAGE
PEZ 0966	41
PEZ 0967	43
PEZ 0968	44
PEZ 0975	29
PEZ 0983	50
PEZ 0984	40
PEZ 0985	12
PEZ 0987	31,33
PEZ 0988	13
PEZ 0989	31,33
PEZ 0991	1
PEZ 0994	44
PEZ 0995	21
PEZ 0997	35
PEZ 0999	43
PEZ 1000	7
PEZ 1003	2
PEZ 1004	4
PEZ 1005	2
PEZ 1006	2
PEZ 1015	21
PEZ 1020	22
PEZ 1022	35
PEZ 1023	32
PEZ 1024	50
PEZ 1025	33
PEZ 1026	40
PEZ 1027	42
PEZ 1034	51
PEZ 1035	21
PEZ 1057	50
PEZ 1070	23
PEZ 1072	29
PEZ 1079	44
PEZ 1089	44
PEZ 1095	47
PEZ 1096	24
PEZ 1098	39
PEZ 1099	39
PEZ 1100	4
PEZ 1101	4

PART NO PAGE

PEZ 1102	6
PEZ 1103	25
PEZ 1104	25
PEZ 1105	24
PEZ 1106	23
PEZ 1107	28
PEZ 1108	26
PEZ 1114	37
PEZ 1116	44
PEZ 1117	43
PEZ 1118	29
PEZ 1119	29
PEZ 1136	48
PEZ 1139	9
PEZ 1140	9
PEZ 1141	9
PEZ 1142	9
PEZ 1143	10
PEZ 1144	10
PEZ 1145	11
PEZ 1146	11
PEZ 1147	10
PEZ 1148	9
PEZ 1149	11
PEZ 1150	9
PEZ 1151	11
PEZ 1152	10
PEZ 1153	10
PEZ 1154	9
PEZ 1155	10
PEZ 1156	11
PEZ 1157	11
PEZ 1158	9
PEZ 1159	9
PEZ 1160	9
PEZ 1161	9
PEZ 1162	11
PEZ 1163	11

PART NO PAGE

PEZ 1164	9
PEZ 1165	11
PEZ 1166	11
PEZ 1167	11
PEZ 1168	11
PEZ 1169	11
PEZ 1170	11
PEZ 1171	4
PEZ 1173	15
PEZ 1174	1
PEZ 1216	31
PEZ 1227	49
PEZ 1284	28
PEZ 1317	31,33
PEZ 1318	19
PEZ 1321	16
PEZ 1345	24
PEZ 1346	12
PEZ 1351	23
PEZ 1355	23
PEZ 1499	24
PEZ 1512	23
PEZ 1553	24
PEZ 1555	24
PEZ 1556	24
PEZ 5010	3
PEZ 5039	24
PEZ 5042	34
PEZ 5054	22
PEZ 5084	24
PEZ 5085	12
PEZ 5086	36
PEZ 5094	29
PEZ 5095	30
PEZ 5101	21
PEZ 5102	21
PEZ 5103	21
PEZ 5105	21

