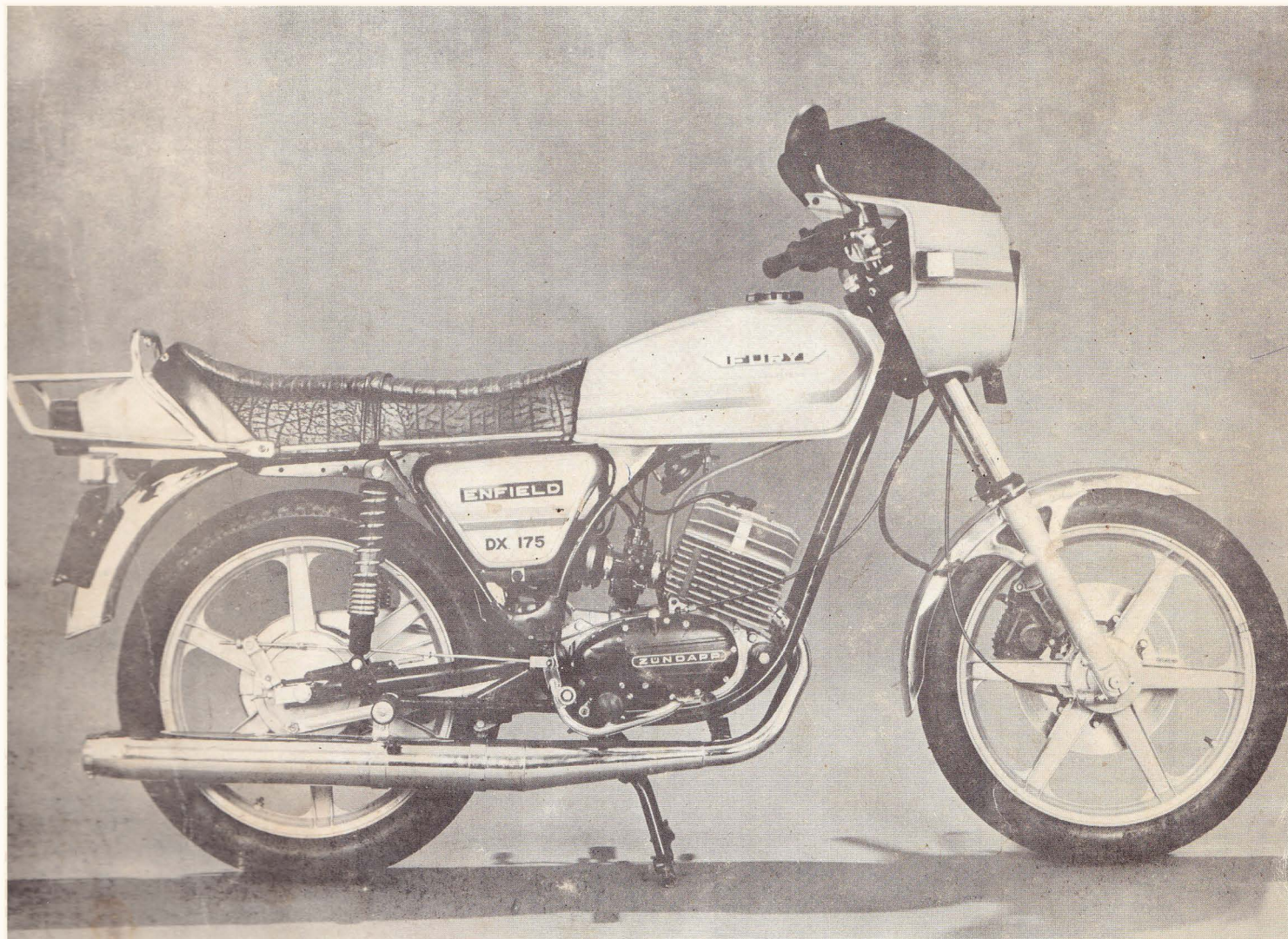
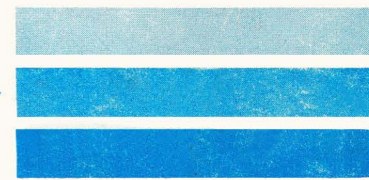


Spare Parts Catalogue

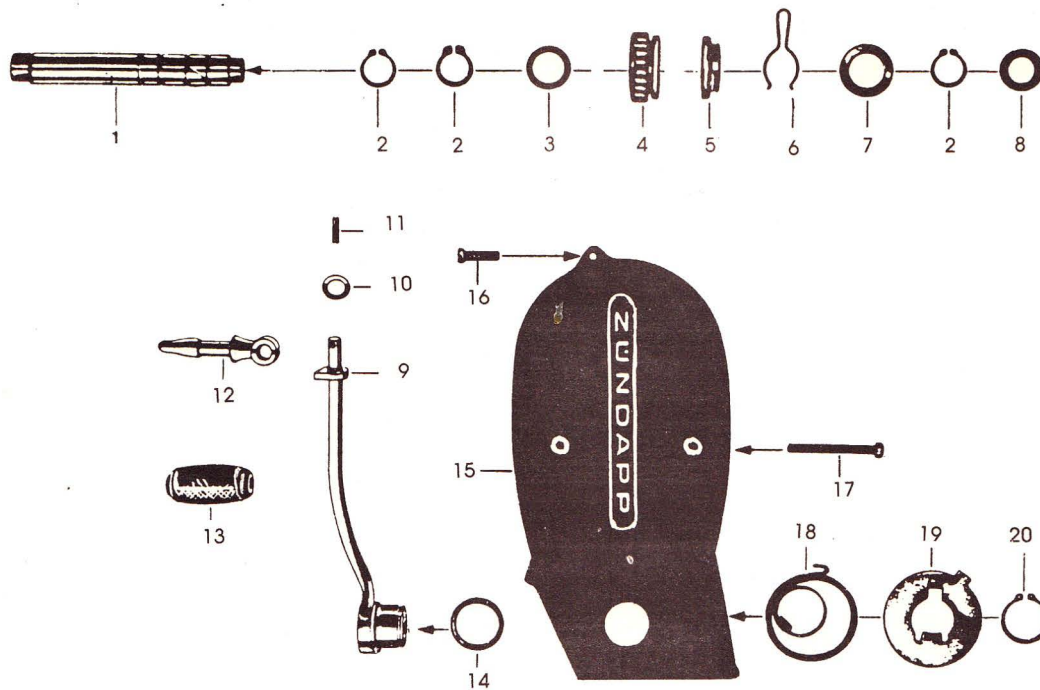


ENFIELD

FURY

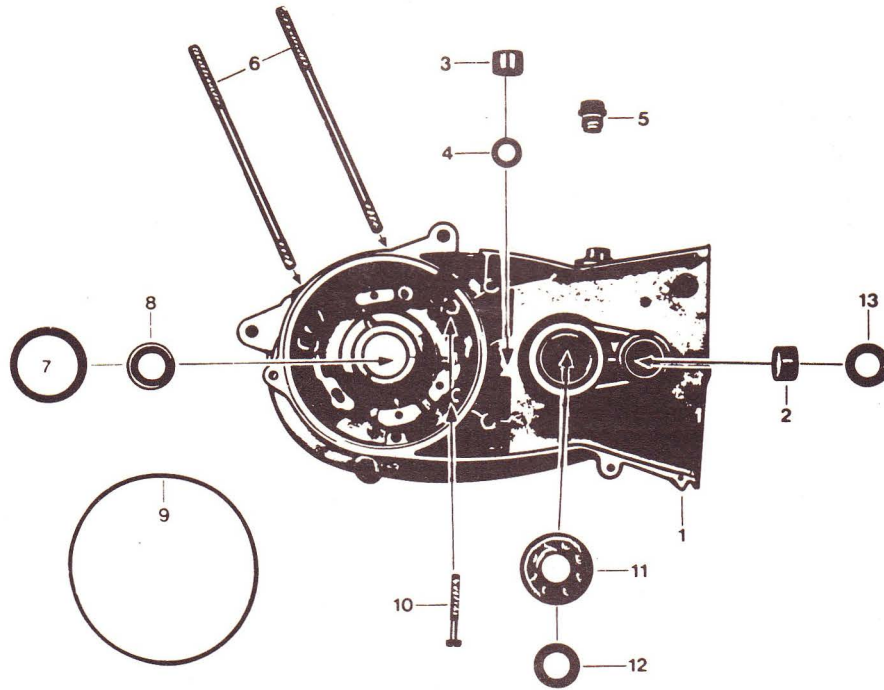


KICK STARTER ASSEMBLY



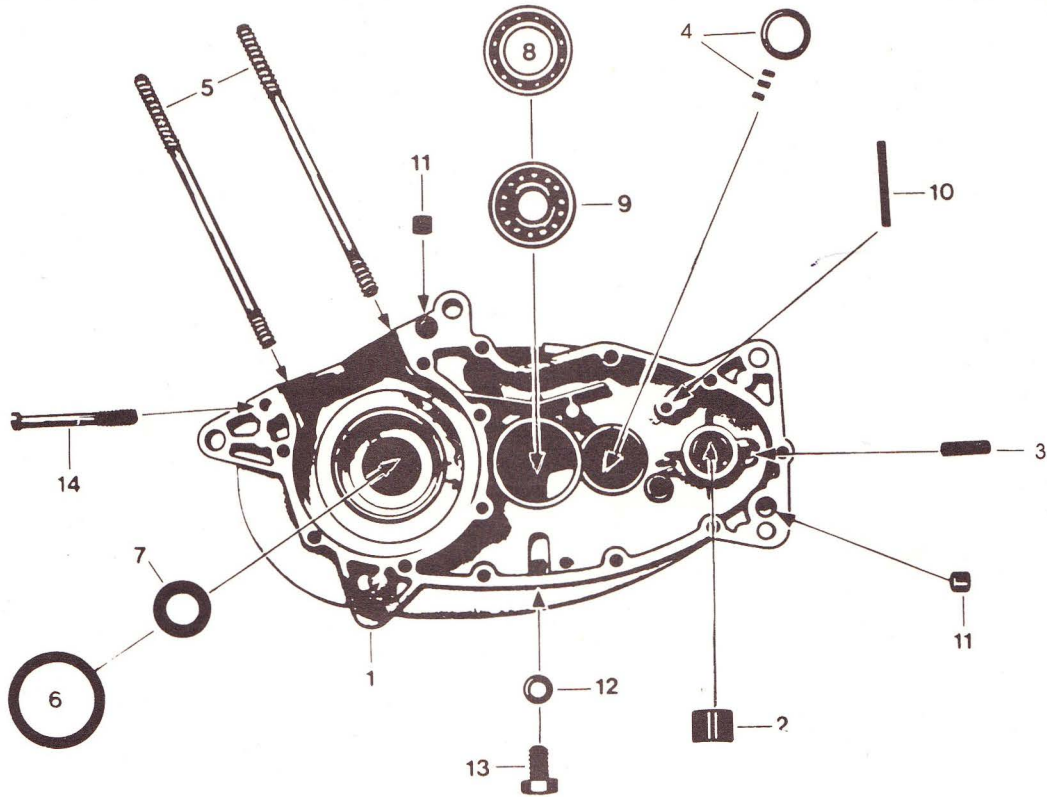
S. No.	Part No.	Description	No. off
1.	285-05-347-13	Kickstarter shaft	1
2.	PEZ 0542-22-4	External circlip 20 × 1.75	3
3.	265-05-203-15	Support washer 20 × 28 × 2	1
4.	285-05-169-13	Starter wheel	1
5.	283-05-149-14	Drivedog	1
6.	267-05-334-15	Brake spring	1
7.	265-05-255-19	Washer 22.1 × 32 × 0.2	AR
8.	265-05-245-19	Washer 16.1 × 28 × 1.0	1
9.	288-05-146-13	Kickstarter lever	1
10.	288-05-147-15	Spring Washer 10.5	1
11.	PEZ 0800-26-4	Spring Dowel 3 × 18	1
12.	283-05-168-14	Kickstarter Arm	1
13.	280-05-175-14	Rubber cover	1
14.	283-05-156-19	Washer 28.3 × 34 × 0.5	AR
	283-05-157-19	Washer 28.3 × 34 × 0.8	AR
15.	285-01-231-15	Crankcase cover LH	1
16.	PEZ 0884-10-4	Slotted Cheese Head Screw AM6 × 22	1
17.	PEZ 0883-10-4	Slotted Cheese Head Screw BM6 × 55	2
18.	267-05-328-14	Starter spring	1
19.	284-05-603-15	Cover plate Assy	1
20.	PEZ 0544-22-4	External Circlip 28 × 1.5	1

CRANKCASE L.H.



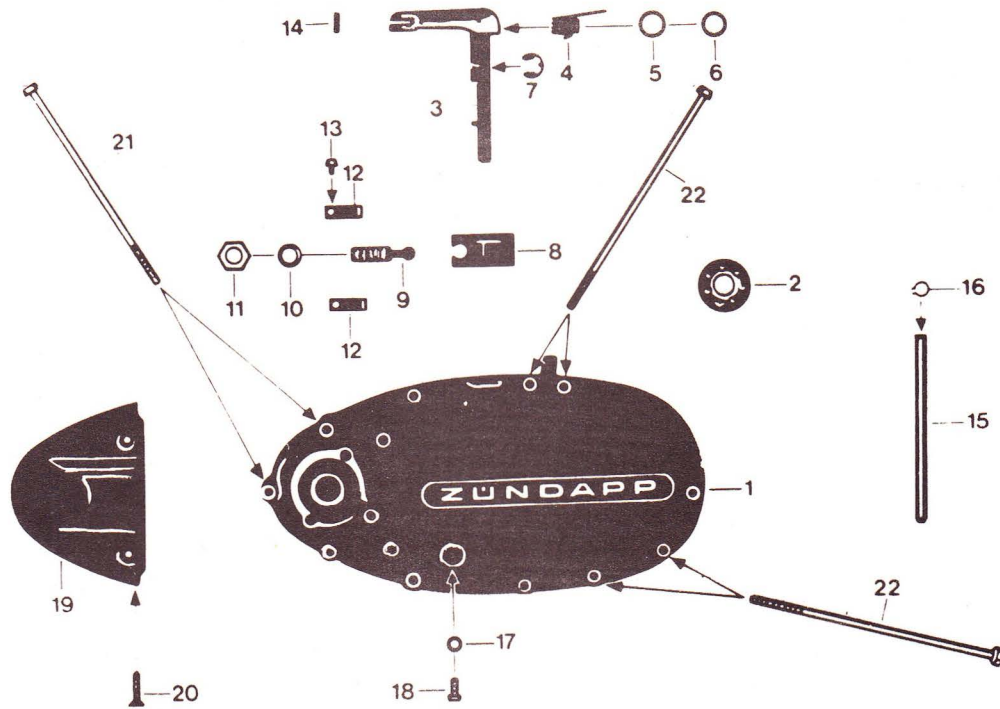
S. No.	Part No.	Description	No. off
1.	285-01-206-11	Crankcase LH	1
2.	285-01-152-19	Bush 20 × 22 × 14	1
3.	285-01-757-15	Needle Sleeve 12 × 20 × 13	1
4.	285-01-224-19	Washer 12.3 × 19.9 × 1	1
5.	PEZ 1174-32-4	Screw Plug with clip	1
6.	288-01-109-14	Stud Bolt M8 × 166	2
7.	285-01-212-19	Washer 42 × 51.9 × 0.20	1
	285-01-211-19	Washer 42 × 51.9 × 0.10	AR
	285-01-210-19	Washer 42 × 51.9 × 0.05	AR
8.	285-01-194-15	Oil Seal 20 × 30 × 7	1
9.	285-01-192-19	O Ring 123 × 2.5	1
10.	PEZ 0881-10-4	Slotted Cheese Head Screw BM6 × 45	2
11.	PEZ 0910-28-4	Ball Bearing 6204 C3 20 × 47 × 14	1
12.	285-01-183-15	Oil Seal 20 × 30 × 7	1
13.	285-01-204-19	Oil Seal 20 × 28 × 6	1

CRANKCASE R.H.



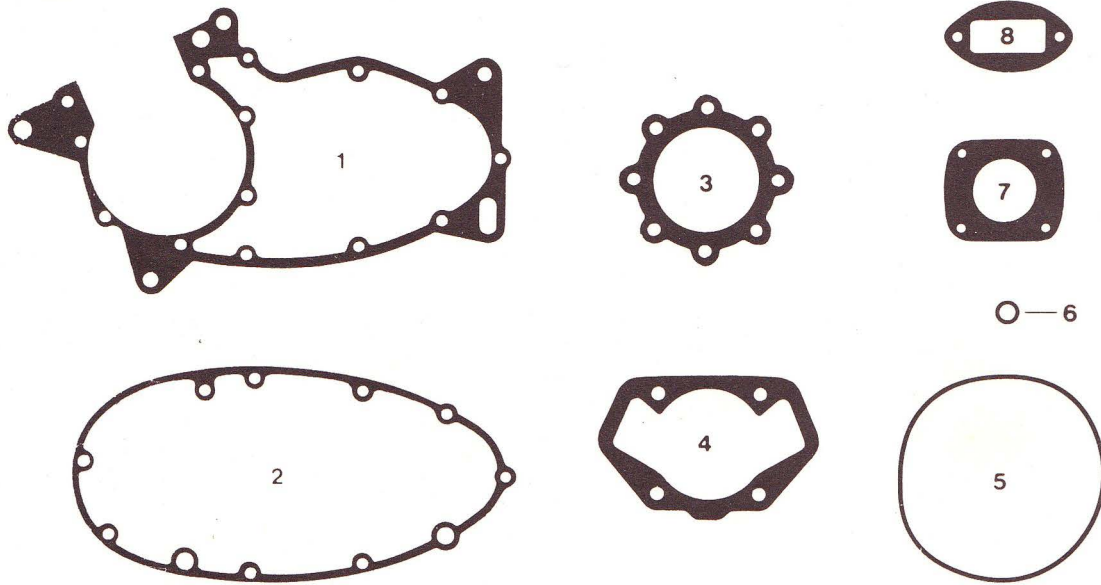
S. No.	Part No.	Description	No. off
1.	285-01-207-11	Crankcase RH	1
2.	267-01-153-14	Bush \varnothing 16	1
3.	267-05-129-15	Cotter pin	1
4.	285-05-677-14	Cylindrical Roller Bearing	1
5.	288-01-109-14	Stud Bolt M8 \times 166	2
6.	285-01-212-19	Washer 42 \times 51.9 \times 0.20	AR
	285-01-211-19	Washer 42 \times 51.9 \times 0.10	AR
	285-01-210-19	Washer 42 \times 51.9 \times 0.05	AR
7.	285-01-220-15	Oil Seal 20 \times 30 \times 8	AR
8.	PEZ 0908-28-4	Ball Bearing 16005/C3/25 \times 47 \times 8	1
9.	PEZ 0909-28-4	Ball Bearing 6303/C3/17 \times 47 \times 14	1
10.	PEZ 0801-26-4	Spring Dowel 5 \times 45	1
11.	250-01-229-14	Bush	4
12.	PEZ 0827-21-4	Copper Washer A10 \times 13.5	1
13.	PEZ 0846-08-4	Hex Screw M10 \times 18	1
14.	PEZ 0882-10-4	Slotted Cheese Head Screw BM6 \times 65 \times 20	1

CLUTCH COVER – CLUTCH ACTUATING ARM



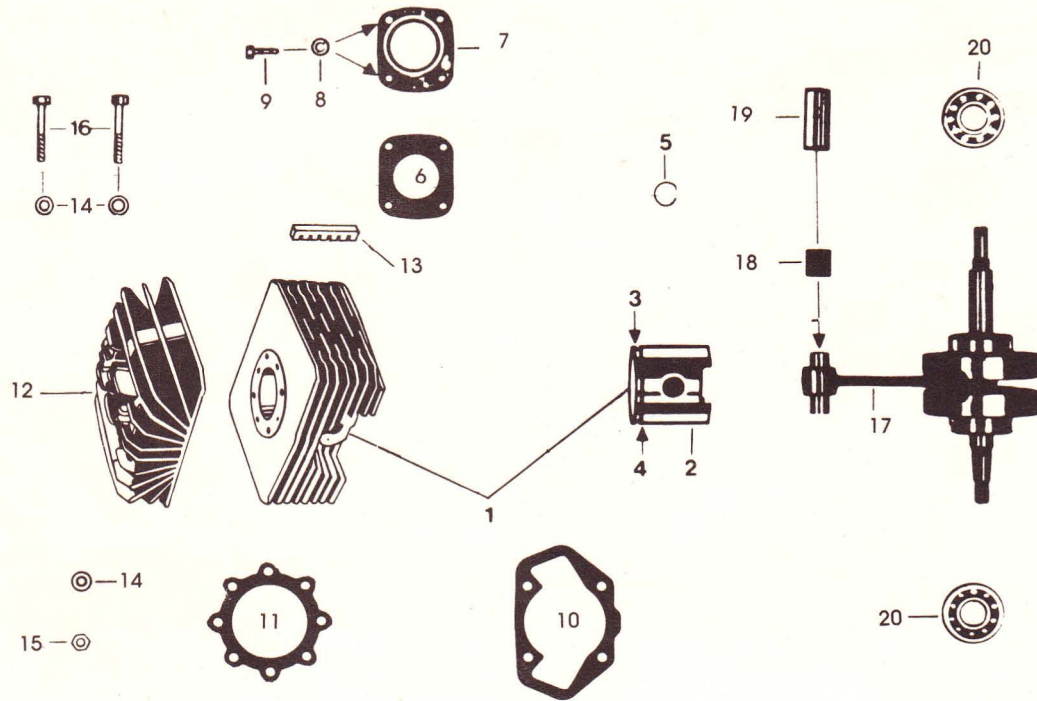
S. No.	Part No.	Description	No. off
1.	285-01-232-15	Crank case cover RH	1
2.	PEZ 0911-28-4	Ball Bearing 12 × 32 × 10 (6201)	1
3.	265-06-602-14	Clutch Actuating Arm	1
4.	265-06-112-15	Torsion Spring	1
5.	281-06-114-19	Washer 12 × 17 × 0.2	AR
	281-06-115-19	Washer 12 × 17 × 0.5	1
6.	405-15-388-19	O Ring	1
7.	PEZ 0796-24-4	Radial Retaining Ring	1
8.	265-06-104-15	Clutch Tongue	1
9.	265-06-106-15	Adjusting Screw M10 × 1	1
10.	PEZ 0827-21-4	Copper Washer	1
11.	PEZ 0842-14-4	Hex Lock Nut M10 × 1	1
12.	265-06-109-15	Leaf Spring	2
13.	PEZ 0886-10-4	Slotted Cheese Head Screw AM4 × 6	2
14.	PEZ 0799-26-4	Spring Dowel 3 × 12	1
15.	285-05-325-15	Guide pin	1
16.	PEZ 0794-22-4	External Circlip 8 × 0.8	1
17.	PEZ 0828-21-4	Al. Washer A6 × 10	1
18.	PEZ 0892-11-4	Slotted Cheese Head Screw AM6 × 12	1
19.	285-01-233-15	Tail piece (RH Cover)	1
20.	PEZ 0898-13-4	Slotted Raised Countersunk Head Screw AM5 × 20	2
21.	285-01-181-15	Cheese Head Screw BM6 × 140 × 25	3
22.	285-01-180-15	Cheese Head Screw BM6 × 154 × 25	8

ENGINE GASKET KIT



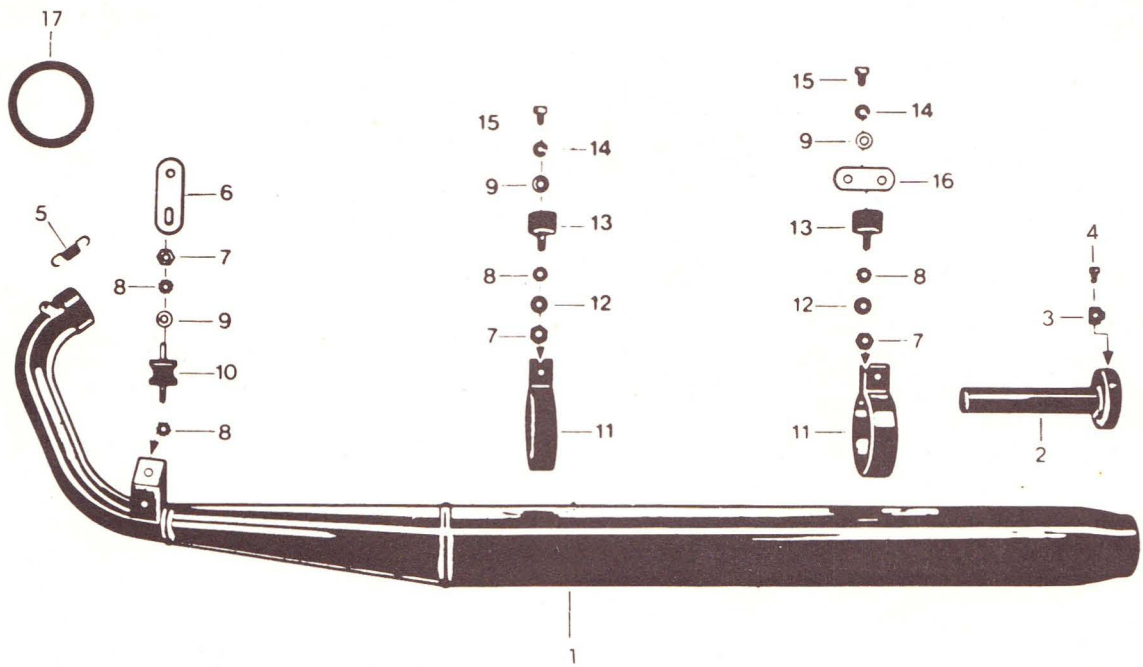
S. No.	Part No.	Description	No. off
1.	285-01-114-12	Crankcase centre gasket	1
2.	285-01-115-12	RH Cover gasket	1
3.	PEZ 1738-01-4	Cylinder head gasket	1
4.	288-02-114-14	Cylinder base gasket	1
5.	285-01-192-19	'O' Ring 123 × 2.5	1
6.	405-15-388-19	'O' Ring	1
7.	288-02-113-14	Exhaust flange gasket	1
8.	PEZ 1741-31-5	Inlet pipe gasket	1

CYLINDER – CRANKSHAFT



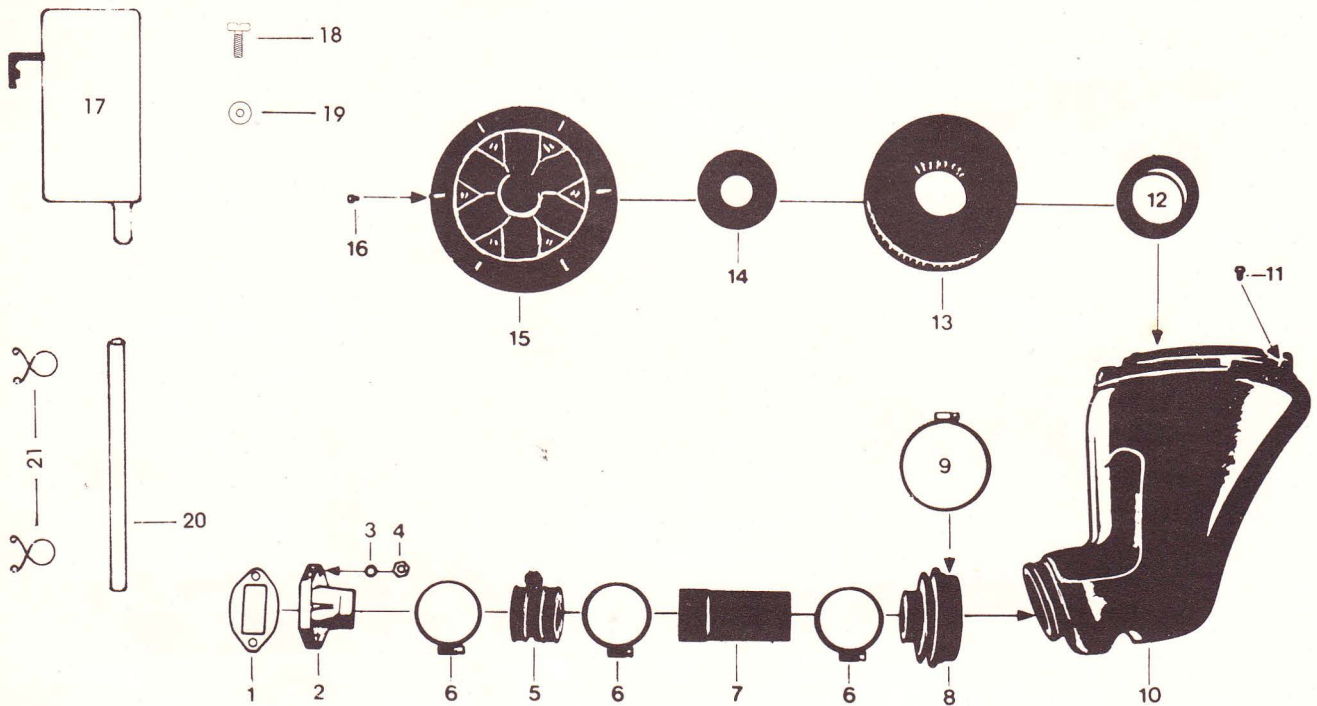
S. No.	Part No.	Description	No. off
1.	PEZ 1742-01-3	Cylinder with piston	1
	PEZ 1373-01-0	Cylinder	1
2.	288-02-708-12	Piston 62 mm	1
3.	288-02-121-14	Piston ring	1
4.	288-02-122-14	Piston ring	1
5.	PEZ 1258-24-4	Gudgeon pin circlip	2
6.	288-02-113-14	Gasket (exhaust flange)	1
7.	288-02-612-14	Exhaust flange assy.	1
8.	PEZ 0809-18-4	Washer A 6.4	4
9.	PEZ 0873-09-4	Hex. socket head cap screw M6 × 20	4
10.	288-02-114-14	Cylinder base gasket	1
11.	PEZ 1738-01-4	Cylinder head gasket	1
12.	288-02-135-11	Cylinder head	1
13.	288-02-137-14	Damper rubber	4
14.	285-02-204-19	Washer 8.4 × 16.5 × 2.5	8
15.	PEZ 0839-14-4	Hex nut M8	4
16.	PEZ 1104-09-4	Hex. socket head cap screw M8 × 55	4
17.	288-03-602-13	Crankshaft assy.	1
18.	292-03-107-14	Needle cage 18 × 22 × 23 (small end)	1
19.	294-03-112-14	Gudgeon pin	1
20.	285-03-132-15	Shoulder ball bearing (20 × 52 × 15)	2

SILENCER ASSEMBLY



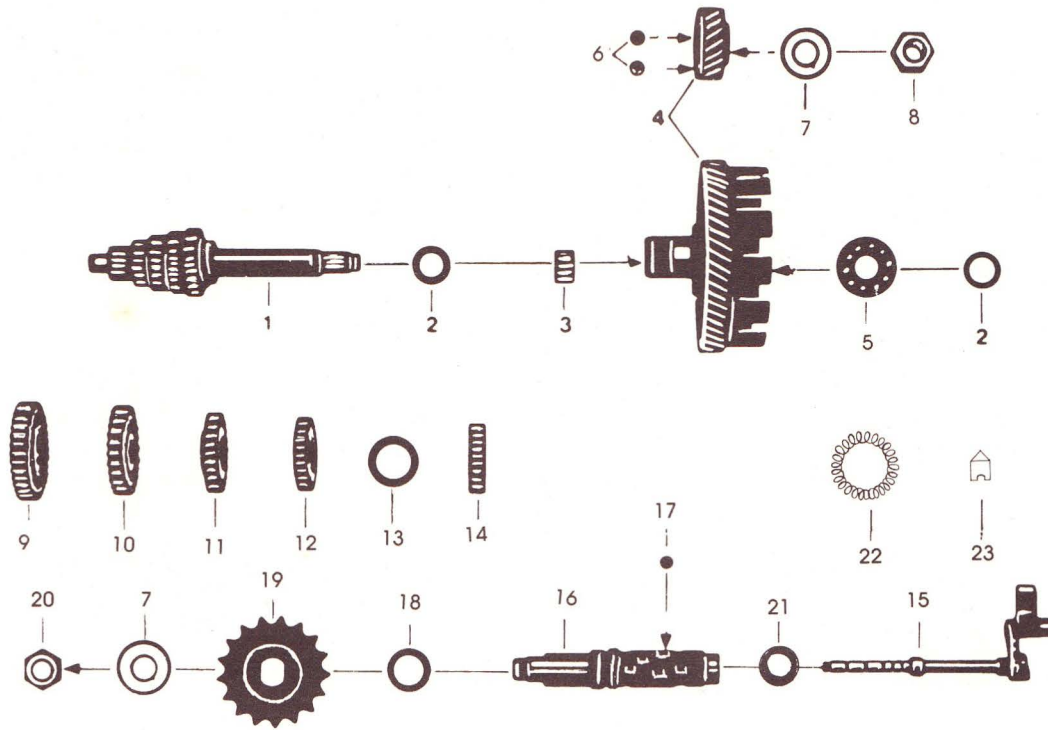
S. No.	Part No.	Description	No. off
1.	PEZ 0515-01-0	Silencer Assy	1
2.	PEZ 0548-01-3	Silencer End Cup Assy	1
3.	520-22-908-15	Lock plate	1
4.	PEZ 0867-08-4	Hex screw M6 × 10	1
5.	448-15-136-15	Tension Spring	3
6.	521-22-117-15	Clamp	1
7.	PEZ 0946-14-4	Hex Nut M8	3
8.	PEZ 0825-20-4	Externally Toothed Washer A 8.4	4
9.	PEZ 0813-18-4	Washer A 8.4	3
10.	521-22-116-15	Buffer	1
11.	521-22-107-14	Exhaust Clamp	2
12.	PEZ 0832-21-4	Undulated Washer B8	2
13.	521-22-108-15	Buffer	2
14.	PEZ 0818-19-4	Spring Washer B8	2
15.	PEZ 0863-08-4	Hex Screw M8 × 12	2
16.	521-22-110-15	Connecting Link	1
17.	521-22-125-15	Sealing Ring	1

AIR FILTER ASSEMBLY – INDUCTOR



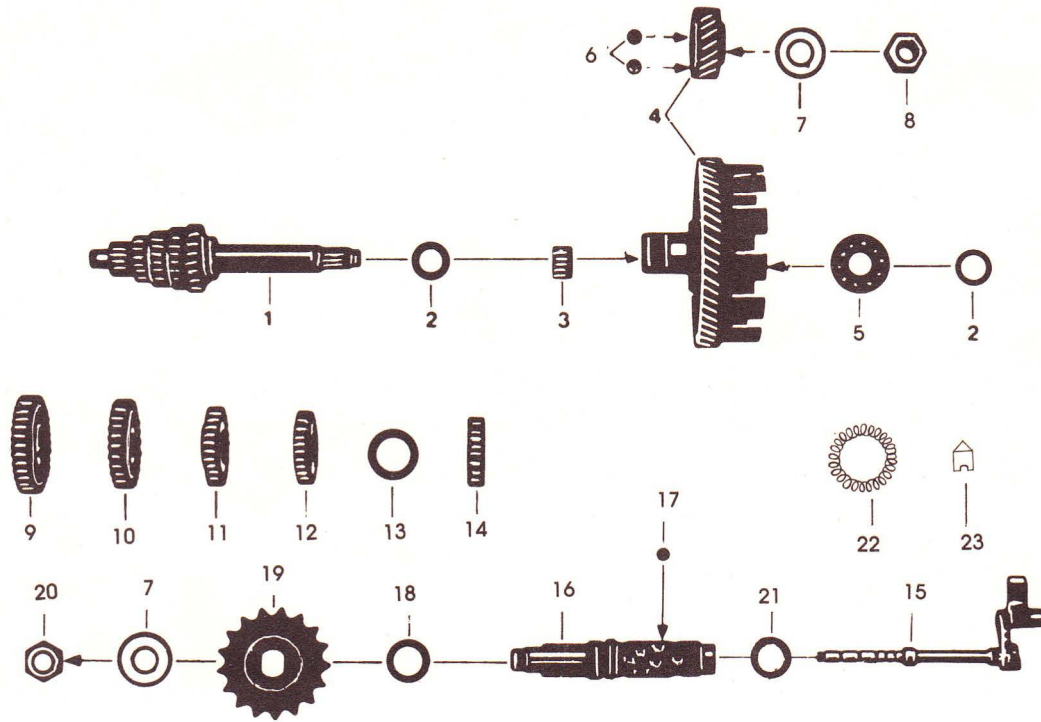
S. No.	Part No.	Description	No. off
1.	PEZ 1741-31-5	Gasket (inlet pipe)	1
2.	PEZ 1539-01-2	Inlet pipe	1
3.	PEZ 0809-18-4	Washer 6.4	2
4.	PEZ 0945-14-4	Hex Nut M6	2
5.	PEZ 1705-01-4	Sleeve with adopter	1
6.	PEZ 0932-31-4	Clamping Clip Al 40-60 C6	3
7.	PEZ 1750-32-4	Tube	1
8.	PEZ 1545-30-4	Bellows	1
9.	PEZ 0933-31-4	Clamping Clip Al 60-80 C6	1
10.	520-10-717-13	Air Filter Assy	1
11.	PEZ 0899-13-4	Cheese Head Tapping Screw BZ 4.2 × 6.5	1
12.	520-10-379-14	Sealing Ring	1
13.	520-10-608-14	Air Filter Element	1
14.	520-10-324-14	Sealing Ring 34.8	1
15.	521-10-623-14	Cover assy	1
16.	PEZ 0901-13-4	Cheese Head Tapping Screw BZ 4.2 × 9.5	6
17.	PEZ 1697-01-4	Inductor	1
18.	PEZ 0890-10-4	Cheese Head Screw AM6 × 12	1
19.	PEZ 0819-19-4	Spring washer B6	1
20.	PEZ 1686-30-4	Fuel Tube (inductor)	1
21.	PEZ 1733-01-4	Wire clamp	2

MAIN DRIVE SHAFT – CLUTCH BELL – SELECTOR SHAFT



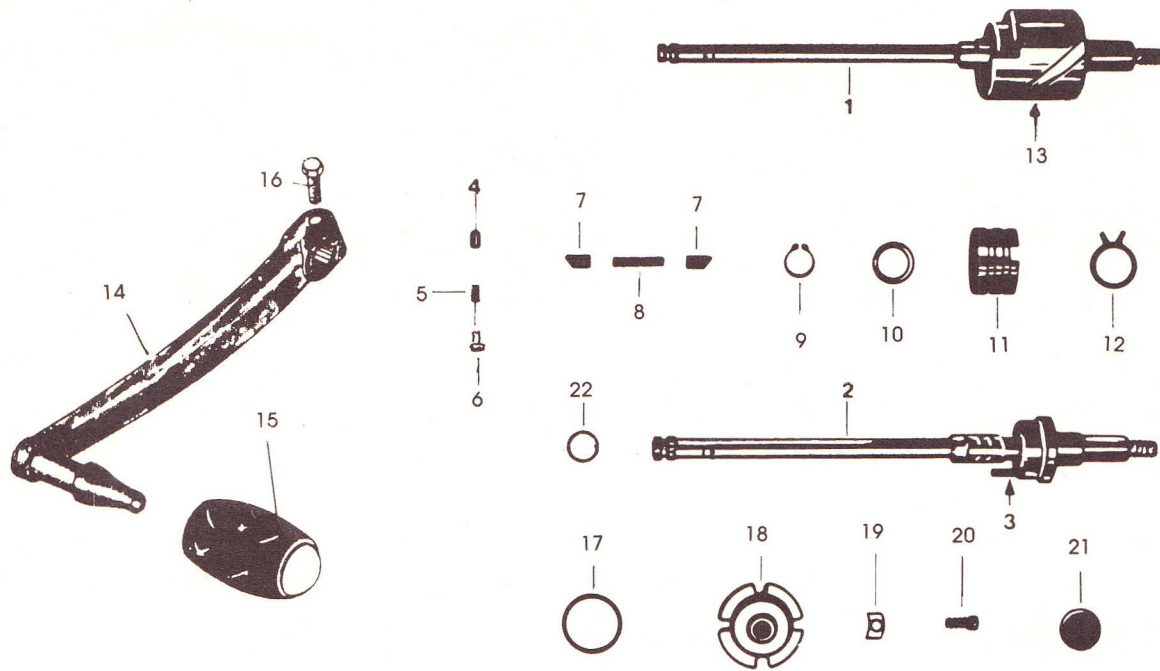
S. No.	Part No.	Description	No. off
1.	288-05-602-14	Gear Main Shaft	1
2.	265-05-177-19	Washer 17.1 × 23 × 0.1	AR
	265-05-176-19	Washer 17.1 × 23 × 0.2	AR
	265-05-175-19	Washer 17.1 × 23 × 0.5	AR
	265-05-179-19	Washer 17.1 × 23 × 0.8	AR
3.	285-05-330-14	Needle Cage 17 × 21 × 12.8	1
4.	288-05-703-14	Clutch Wheel Assy	1
5.	PEZ 0912-28-4	Ball Bearing 17 × 35 × 10	1
6.	PEZ 0905-28-4	Ball 5φ Class III	2
7.	276-05-198-19	Washer 15.2 × 30 × 0.75	2
8.	285-05-151-19	Hex Nut M15 × 1 LH thread	1
9.	288-05-112-13	Gear wheel 1 Gear 34T	1
10.	288-05-113-13	Gear wheel 2 Gear 26T	1
11.	288-05-114-13	Gear Wheel 3 Gear 24T	1
12.	288-05-115-13	Gear Wheel 4 Gear 23T	1
13.	265-05-255-19	Washer 22.1 × 32 × 0.2	AR
	265-05-256-19	Washer 22.1 × 32 × 0.1	AR
	265-05-257-19	Washer 22.1 × 32 × 0.3	AR
14.	288-05-116-13	Gear Wheel 5 Gear 20T	1
15.	285-05-673-14	Push rod with shift fork assy	1
16.	288-05-117-13	Shift shaft assy	1
17.	285-05-346-15	Ball 7	20

MAIN DRIVE SHAFT - CLUTCH BELL - SELECTOR SHAFT



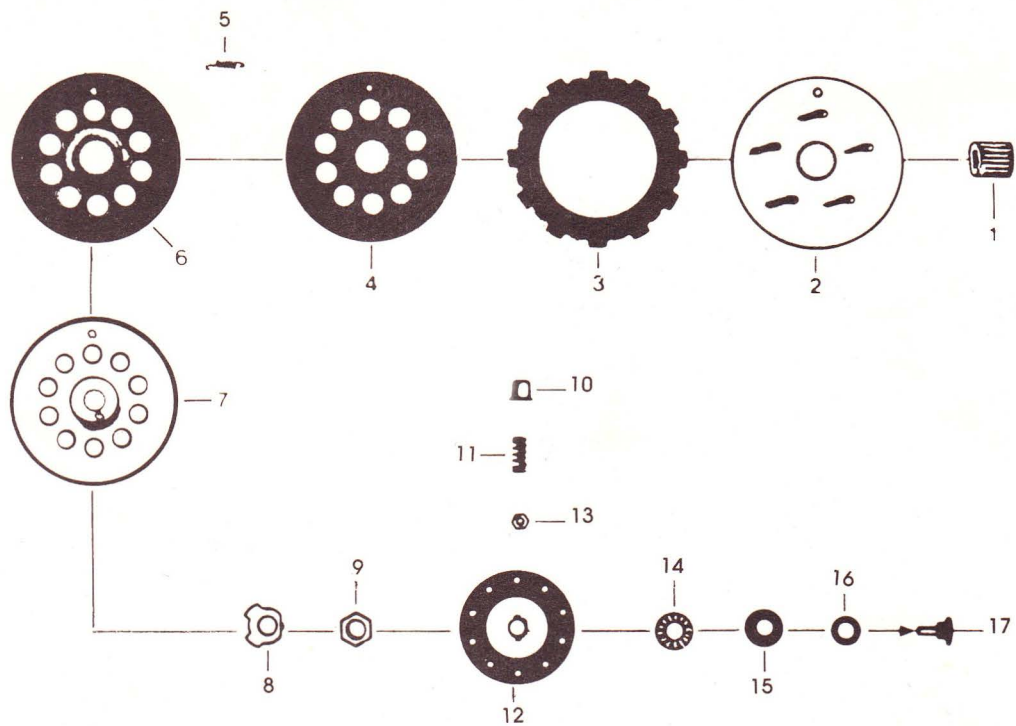
S. No.	Part No.	Description	No. off
18.	267-05-310-19	Washer 20.2 × 28 × 0.1	AR
	267-05-315-19	Washer 20.2 × 28 × 0.2	AR
	267-05-312-19	Washer 20.2 × 28 × 1.0	AR
	267-05-313-19	Washer 20.2 × 28 × 0.5	AR
19.	PEZ 1453-01-4	Drive Sprocket 16T	1
20.	276-05-119-15	Hex Nut M15 × 1	1
21.	285-05-341-15	Spacer Ring 18 × 22 × 2	1
22.	267-05-104-15	Tension Spring	1
23.	267-05-102-15	Locking Pin	2

GEAR SHIFT SHAFT ASSY



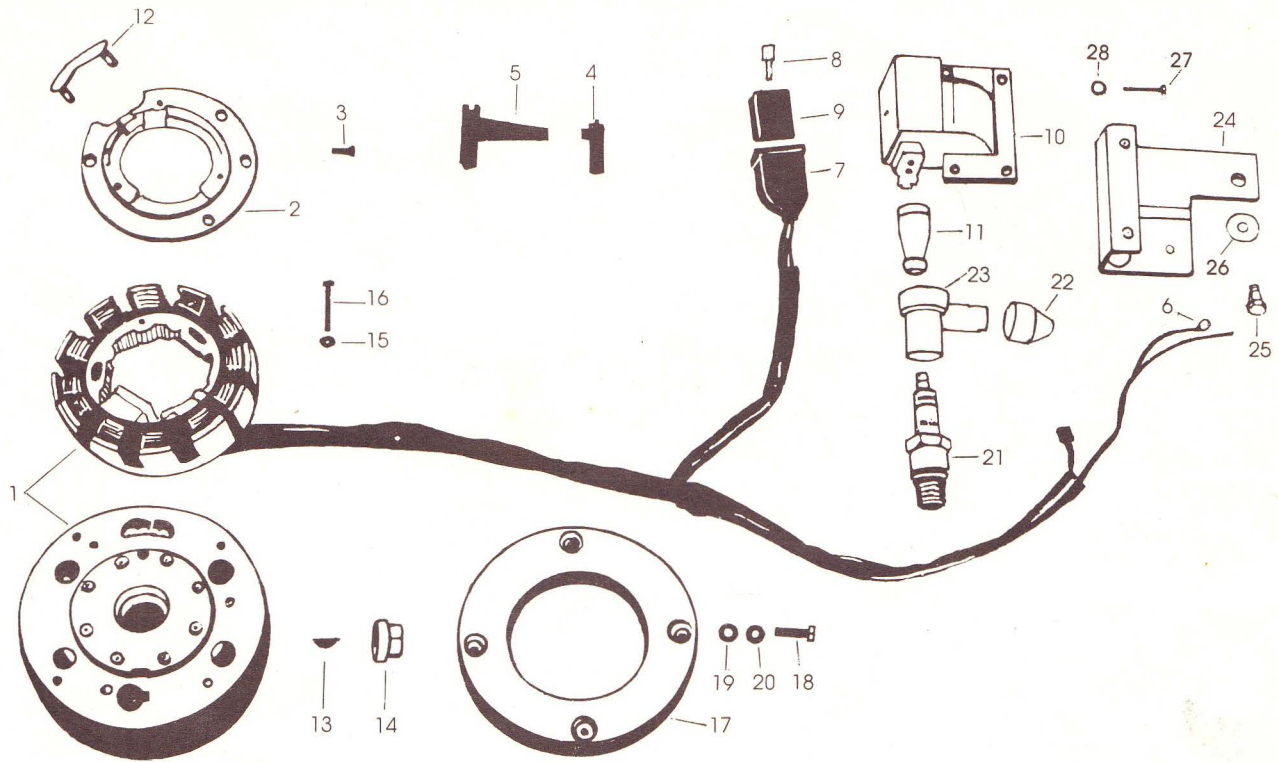
S. No.	Part No.	Description	No. off
1.	261-06-155-15	Foot shift shaft assy	1
2.	285-05-618-15	Foot shift spindle assy	1
3.	PEZ 0918-28-4	Needle Roller 3 × 27.8	1
4.	267-05-125-15	Locking pin	1
5.	267-05-126-15	Compression spring	1
6.	PEZ 0921-27-4	Round Head Rivet 2.6 × 6	1
7.	267-05-586-15	Shift Pawl	2
8.	267-05-585-14	Compressing Spring	1
9.	PEZ 0795-22-4	External circlip 16 × 1	1
10.	267-05-244-19	Washer 16.2 × 22.8 × 0.1	AR
11.	285-05-256-14	Ratchet Holder	1
12.	278-05-100-14	Torsion Spring	1
13.	284-05-119-13	Shift Bell	1
14.	283-05-165-14	Gear Change Lever Assy	1
15.	280-05-175-14	Rubber Cover	1
16.	PEZ 0845-08-4	Hex Screw M6 × 16	1
17.	285-05-322-19	'O' Ring 30 × 2.5	1
18.	267-05-112-14	Adjusting Bell	1
19.	267-05-113-15	Washer	2
20.	PEZ 0894-11-4	Slotted Pan Head Screw M6 × 16	2
21.	267-05-130-15	Rubber Sleeve	1
22.	266-05-192-19	'O' Ring	1

CLUTCH ASSEMBLY



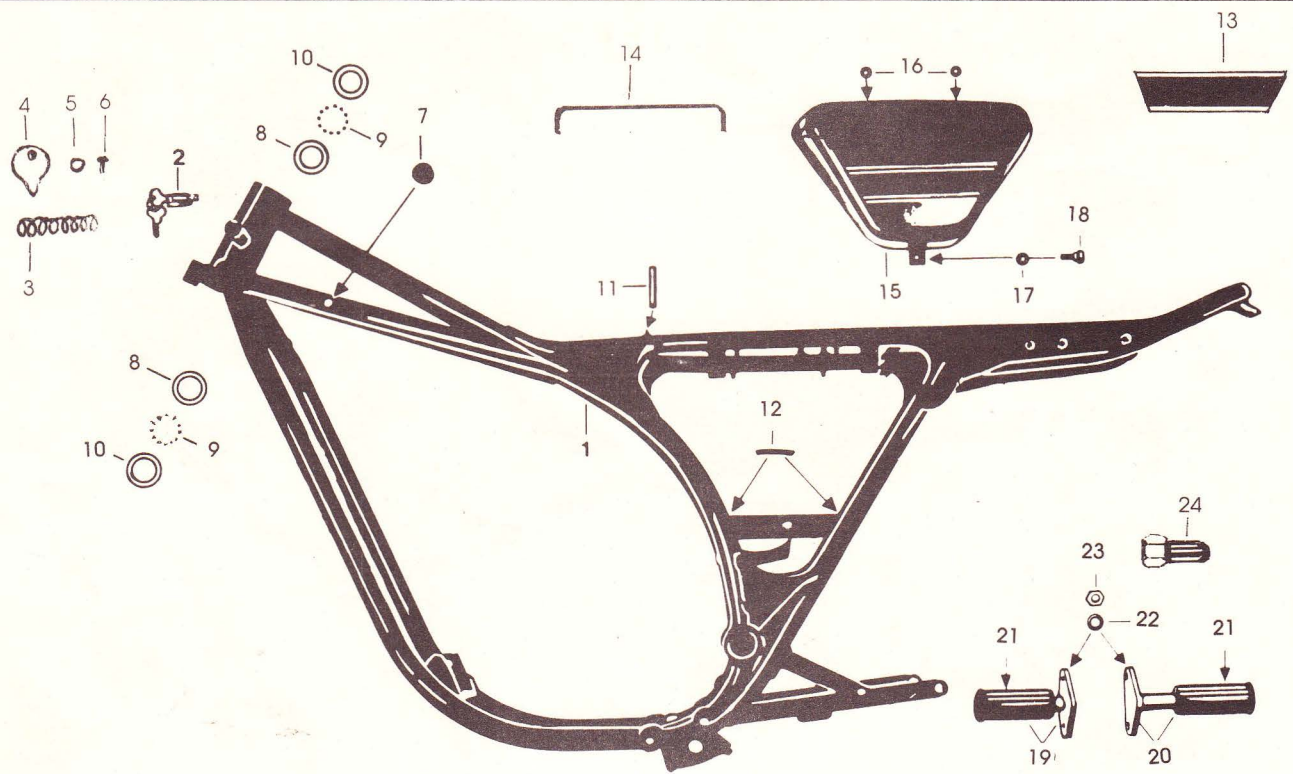
S. No.	Part No.	Description	No. off
1.	285-06-101-14	Clutch pinion	1
2.	285-06-600-15	Back plate assy	1
3.	288-06-600-13	Clutch Friction Disc	5
4.	285-06-124-14	Clutch plate	3
5.	285-06-122-14	Tension Spring	2
6.	285-06-125-14	Clutch Plate	1
7.	265-06-127-14	Cover plate	1
8.	284-06-104-15	Lock plate	1
9.	265-06-202-15	Hex Nut M12 × 1	1
10.	261-06-155-15	Spring sleeve	10
11.	285-06-107-15	Clutch spring	10
12.	285-06-108-14	Pressure plate	1
13.	PEZ0835-14-4	Hex Nut M4 × 8	5
14.	285-06-115-15	Axial Needle bearing 10 × 24	1
15.	285-06-116-15	Washer 13 × 24 × 1	1
16.	285-06-111-15	Washer 10.1 × 18 × 0.1	AR
	285-06-112-15	Washer 10.1 × 18 × 0.2	AR
	285-06-113-15	Washer 10.1 × 18 × 0.4	AR
	285-06-114-15	Washer 10.1 × 18 × 0.8	AR
17.	285-06-605-14	Thrust pin assy	1

MAGNETO - IGNITION COIL



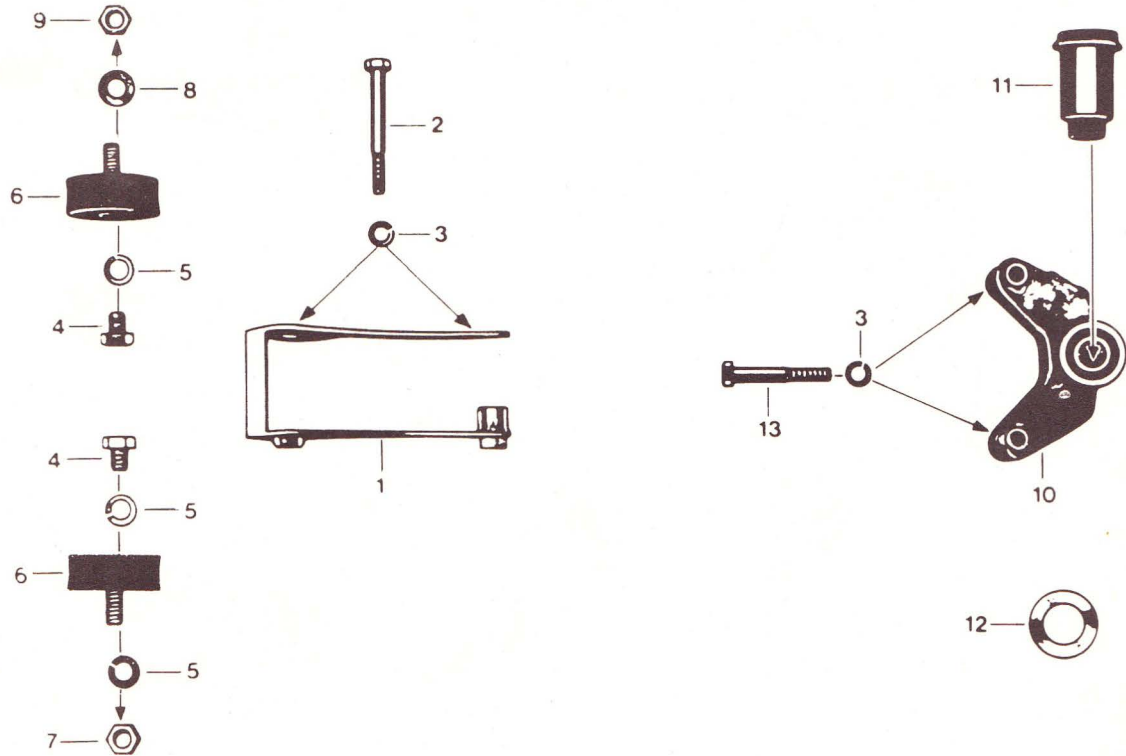
S. No.	Part No.	Description	No. off
1.	PEZ 1275-29-2	Magneto (12 Pole)	1
2.	PEZ 1274-01-4	Adaptor plate	1
3.	PEZ 1257-13-4	Slotted counter sunk screw M4 × 16	4
4.	285-07-105-15	Cable grommet	1
5.	283-07-100-15	Cable sleeve	1
6.	PEZ 1057-29-4	Cable terminal eyelet	3
7.	PEZ 1271-30-4	Protective cap	1
8.	PEZ 1273-29-4	Female blade connector 6.3	3
9.	PEZ 1272-29-4	Connector housing	1
10.	PEZ 1276-29-4	Elec. ignition coil	1
11.	282-07-101-15	Splash protection	1
12.	285-07-129-15	Clamping plate	1
13.	PEZ 0930-31-4	Woodruff key 3 × 3.7	1
14.	285-07-135-15	Nut M12 × 1	1
15.	284-07-124-19	Washer	3
16.	PEZ 1256-10-4	Slotted cheese head screw AM4 × 25	3
17.	PEZ 1688-01-4	Balance weight	1
18.	PEZ 1689-10-4	Slotted cheese head screw AM5 × 16	4
19.	PEZ 0814-18-4	Washer A 5.3	4
20.	PEZ 0821-19-4	Spring washer B5	4
21.	PEZ 1685-01-4	Spark Plug	1
22.	PEZ 0395-30-4	Grommet	1
23.	PEZ 0504-32-4	Spark Plug cap	1
24.	PEZ 1315-01-4	Bracket assy. (ET coil mounting)	1
25.	PEZ 0870-08-4	Hex. screw M6 × 8	2
26.	PEZ 0833-21-4	Undulated washer A6	2
27.	PEZ 1374-08-4	Hex. screw M5 × 20	2
28.	PEZ 0814-18-4	Washer A 5.3	2

FRAME – SIDE COVER – STEERING BEARING ASSY



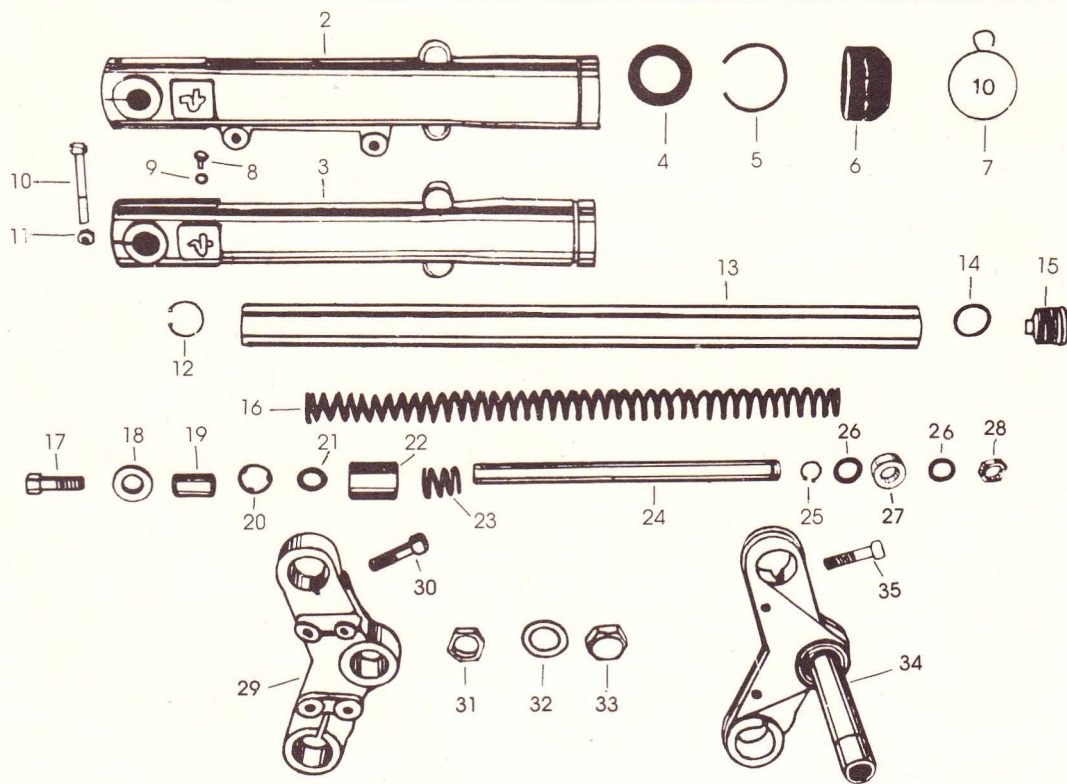
S. No.	Part No.	Description	No. off
1.	PEZ 1700-01-4	Frame assembly	1
2.	521-10-772-13	Locking Unit - 3 Part	1
3.	521-10-227-15	Compression spring	2
4.	517-10-181-15	Cover (Lock)	2
5.	PEZ 0830-21-4	Undulated washer	2
6.	PEZ 1071-27-4	Hammer drive rivet	2
7.	521-10-140-15	Damper (Petrol tank)	2
8.	521-13-110-14	Frame runner ring	2
9.	PEZ 0906-28-4	Ball 6 Class III	36
10.	521-13-111-14	Fork runner ring	2
11.	521-10-167-15	Beading	1
12.	517-20-107-19	Beading	2
13.	521-10-209-14	Sticker speedline	2
14.	561-14-530-19	Beading	2
15.	PEZ 1517-01-4	Side cover LH Assy. (Ruby Red)	1
	PEZ 1518-01-4	Side cover LH Assy. (Strato Silver Grey)	1
	PEZ 1768-01-4	Side cover LH Assy. (Blue)	1
	PEZ 1519-01-4	Side cover RH Assy. (Ruby Red)	1
	PEZ 1520-01-4	Side cover RH Assy. (Grey)	1
	PEZ 1769-01-4	Side cover RH Assy. (Blue)	1
16.	521-10-109-15	Rubber grommet	4
17.	521-10-107-19	Rubber washer	2
18.	521-10-176-15	Knurled screw	2
19.	521-14-619-14	Rider foot rest LH	1
20.	521-14-620-14	Rider foot rest RH	1
21.	521-14-114-14	Foot rest rubber	1
22.	PEZ 0831-21-4	Undulated washer A 10	4
23.	PEZ 0840-14-4	Hex. nut M10	3
24.	521-14-115-15	Stop nut M10 × 38	1

ENGINE MOUNTINGS



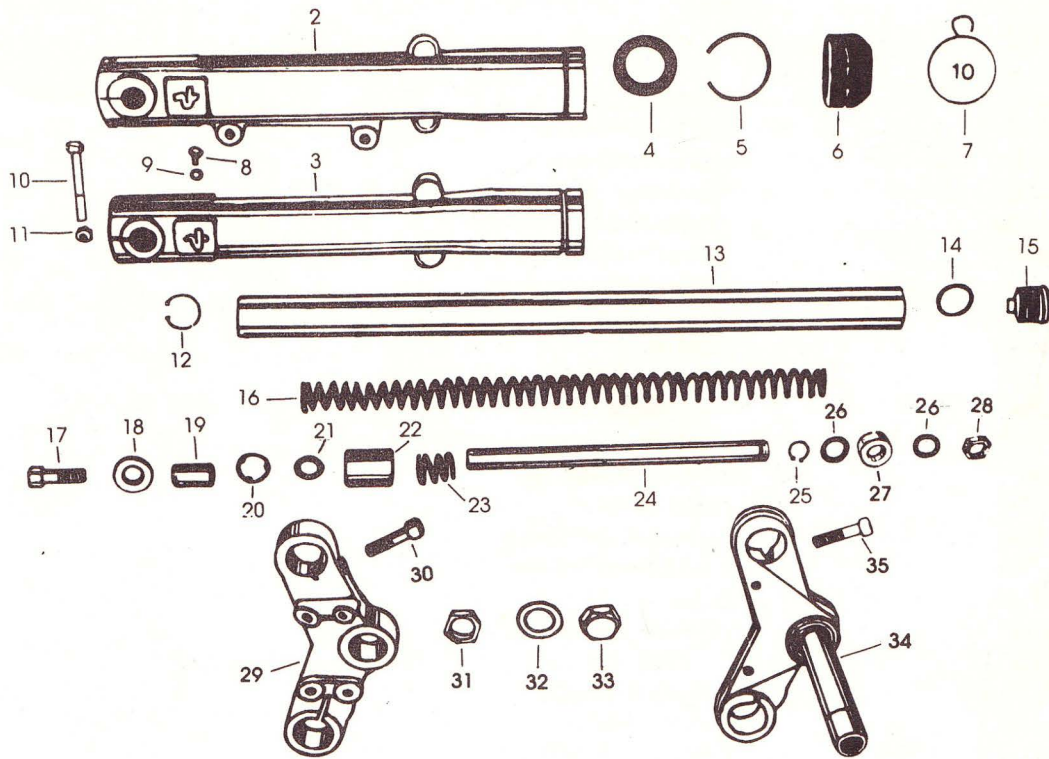
S. No.	Part No.	Description	No. off
1.	520-18-615-13	Engine support front	1
2.	PEZ 0848-08-4	Hex Bolt M8 × 70	1
	PEZ 0849-08-4	Hex Bolt M8 × 75	1
3.	PEZ 0818-19-4	Spring Washer	4
4.	PEZ 0847-08-4	Hex Screw M10 × 12	2
5.	PEZ 0817-19-4	Spring Washer	3
6.	521-18-601-15	Buffer	2
7.	PEZ 0840-14-4	Hex Nut M10	1
8.	PEZ 0817-19-4	Spring Washer	1
9.	PEZ 0840-14-4	Hex Nut M10	1
10.	520-18-703-14	Engine suspension rear	1
11.	520-14-627-14	Elastic Bush	1
12.	520-18-118-15	Washer 23 × 38 × 4.5	1
13.	PEZ 0850-08-4	Hex Bolt M8 × 55	2

FRONT SUSPENSION



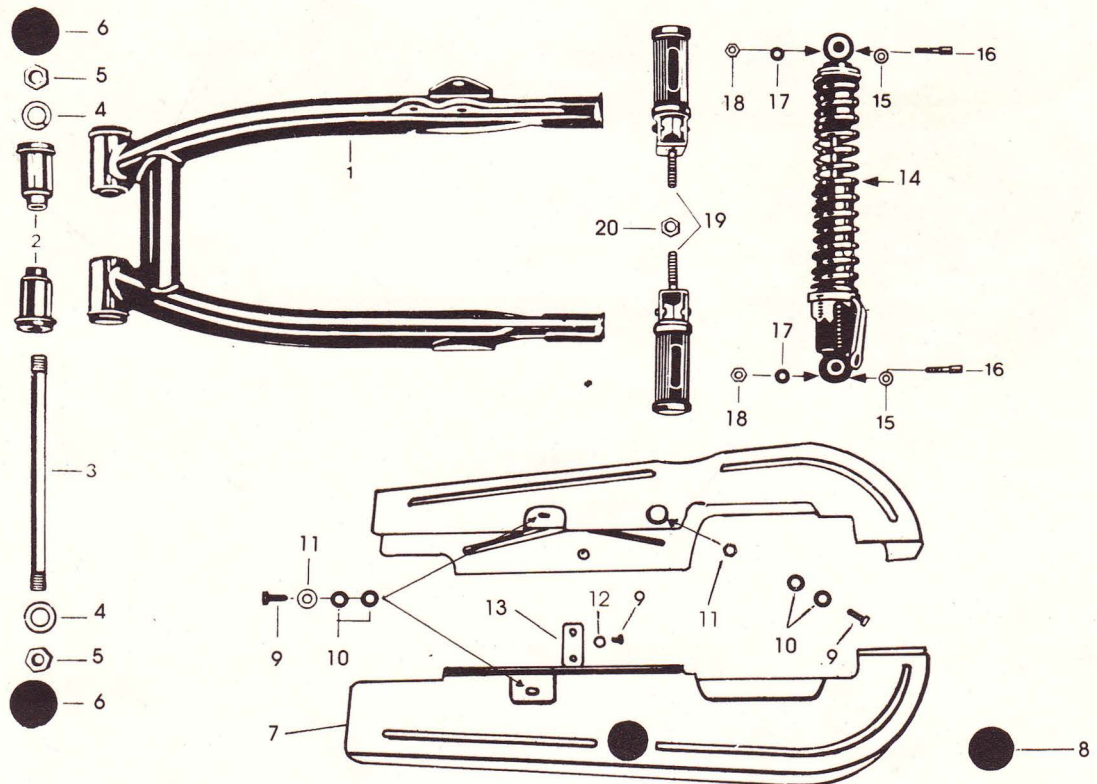
S. No.	Part No.	Description	No. off
1.	PEZ 1712-01-1	Front fork complete	1
2.	PEZ 1423-01-2	Bottom tube LH	1
3.	PEZ 1424-01-2	Bottom tube RH	1
4.	PEZ 1426-30-4	Oil seal	2
5.	PEZ 1425-24-4	Oil seal retaining ring	2
6.	PEZ 1421-30-4	Gaiter	2
7.	PEZ 1422-01-4	Ring clamp - gaiter	2
8.	PEZ 1668-10-4	Oil drain plug M6×7	2
9.	PEZ 1466-18-4	Drain washer	2
10.	PEZ 1694-08-4	Pinch bolt M8×60	2
11.	PEZ 0843-16-4	Self lock nut - M8	2
12.	PEZ 0791-23-4	Internal Circlip 30×1.2	2
13.	PEZ 1419-01-4	Fork Main tube	2
14.	PEZ 1417-30-4	'O' ring	2
15.	PEZ 1416-01-4	Fork Screw top	2
16.	PEZ 1420-01-4	Compression Spring	2
17.	PEZ 1437-09-4	Hex Socket head cap screw M12×35	2
18.	PEZ 1439-01-4	Damper tube washer	2
19.	PEZ 1435-01-4	Damper tube seat	2
20.	PEZ 1428-01-4	Piston Segment	2
21.	PEZ 1432-01-4	Non return valve	2
22.	PEZ 1429-01-4	Piston	2
23.	PEZ 1430-01-4	Return Spring	2
24.	PEZ 1434-01-4	Damper tube	2
25.	PEZ 1440-22-4	External circlip 16×1	2
26.	PEZ 1427-18-4	Piston retaining washer	4

FRONT SUSPENSION



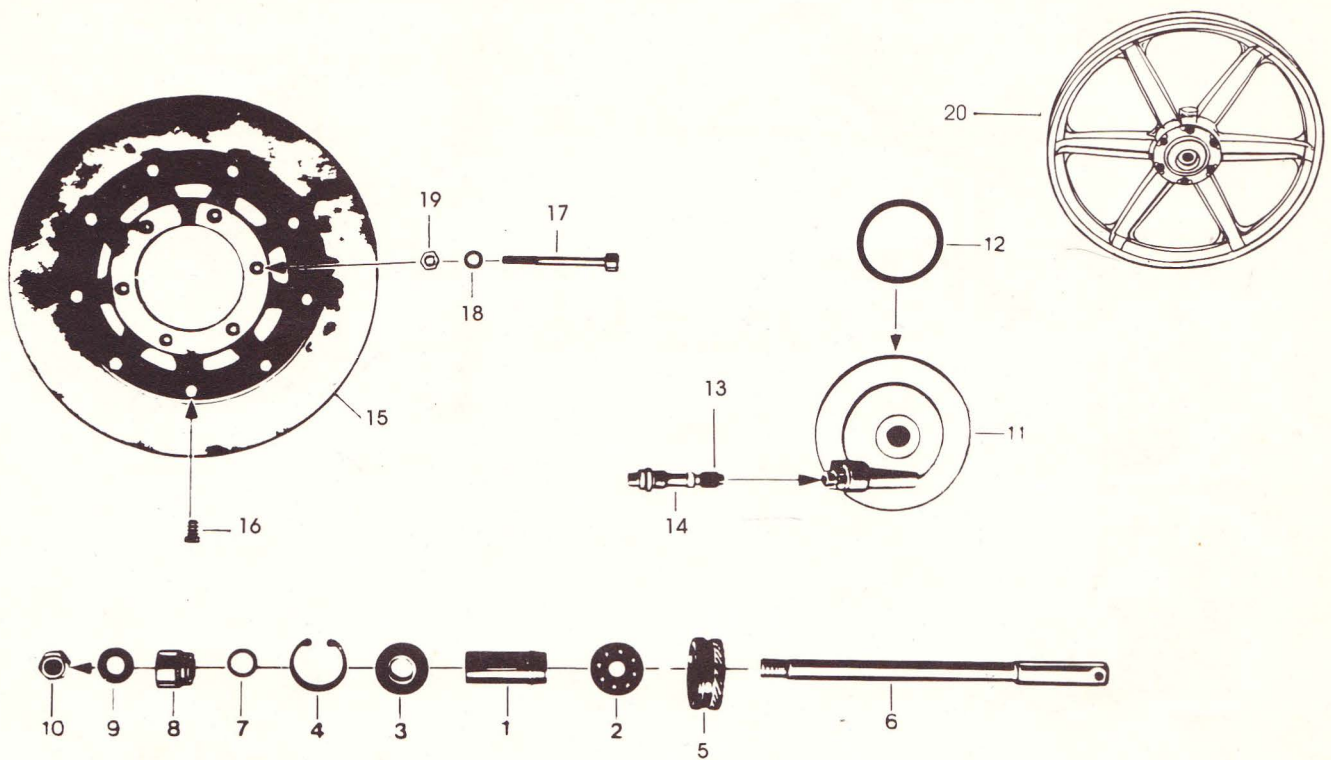
S. No.	Part No.	Description	No. off
27.	PEZ 1433-01-4	Damper tube guide	2
28.	PEZ 1456-14-4	Special Nut	1
29.	PEZ 1413-01-2	Fork crown top	1
30.	PEZ 0877-09-4	Hex socket head cap screw M10×55	2
31.	519-12-110-15	Ball nut	1
32.	442-13-111-4	Washer	1
33.	520-12-143-4	Screw cap nut	1
34.	PEZ 1438-01-4	Crown bottom Assy.	1
35.	PEZ 0876-09-4	Hex socket head cap screw M10×50	2

SWING ARM – CHAIN GUARD – SHOCK ABSORBERS



S. No.	Part No.	Description	No. off
1.	PEZ 1648-01-4	Rear wheel swing arm assy.	1
2.	520-14-627-14	Elastic bush	2
3.	520-14-216-15	Spindle	1
4.	PEZ 0820-19-4	Spring washer B 16	2
5.	520-14-217-19	Hex. nut M15 × 1	2
6.	520-14-237-15	Cap	2
7.	PEZ 1637-01-1	Chainguard	1
8.	PEZ 1640-30-4	Inspection cap - chainguard	1
9.	PEZ 0861-08-4	Hex. bolt M6 × 12	8
10.	PEZ 1641-30-4	Rubber washer	4
11.	PEZ 0810-18-4	Plate washer	6
12.	PEZ 0819-19-4	Spring washer	2
13.	PEZ 1642-01-4	Connecting piece	1
14.	521-14-709-13	Shock absorber	2
15.	PEZ 0832-21-4	Undulated washer B8	4
16.	PEZ 0855-08-4	Hex. screw M8 × 40	4
17.	PEZ 0813-18-4	Washer A8.4	2
18.	561-17-111-19	Stover lock nut	2
19.	521-14-611-13	Pillion foot rest	2
20.	519-15-119-19	Stover lock nut M10	2

FRONT WHEEL ASSY

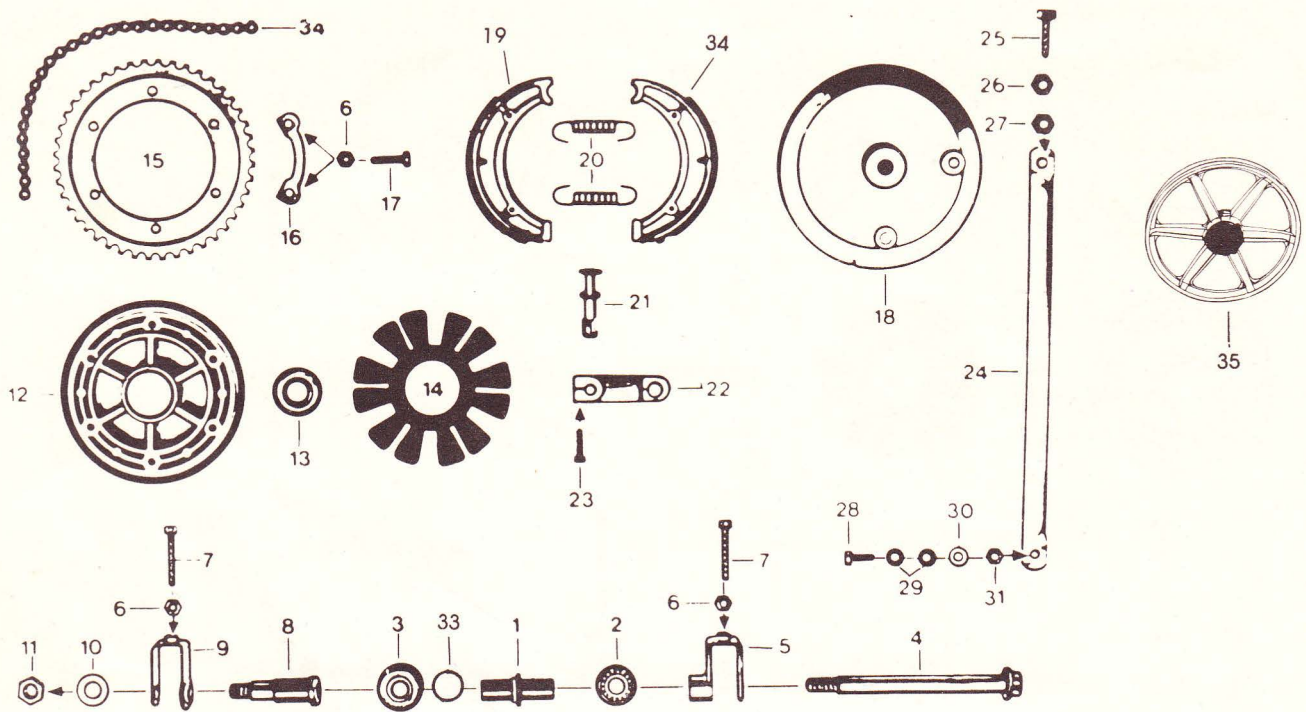


S. No.	Part No.	Description	No. off
1.	PEZ 0642-01-4	Spacer tube	1
2.	PEZ 0914-28-4	Ball bearing 6203 C3 17 × 40 × 12	1
3.	PEZ 0913-28-4	Ball bearing 6203 C3 17 × 40 × 12	1
4.	PEZ 0792-23-4	Internal circlip 40 × 1.75	1
5.	PEZ 0606-01-3	Speedo drive wheel	1
6.	PEZ 0589-01-3	Front wheel Axle	1
7.	265-05-176-19	Washer 17.1 × 23 × 0.2	AR
	265-05-175-19	Washer 17.1 × 23 × 0.5	AR
8.	PEZ 0590-01-4	Bush	1
9.	PEZ 0811-18-4	Washer AM 15	1
10.	433-15-131-19	Hex. nut M14 × 1	1
11.	PEZ 0680-01-3	Speedo drive cover plate assy.	1
12.	PEZ 0603-30-4	Cover plate sealing ring	1
13.	PEZ 0594-01-4	Speedo drive spindle	1
14.	PEZ 0574-01-3	Speedo drive adaptor	1
15.	521-15-734-12	Brake disc assy.	1
16.	PEZ 1701-08-4	Hex. screw M6 × 14	9
17.	PEZ 0878-09-4	Hex. socket head cap screw M8 × 80	6
18.	PEZ 0812-18-4	Washer 8.4	6
19.	561-17-111-19	Stover lock nut M8	6
20.	PEZ 0699-01-3	Front wheel assy.	1

FRONT WHEEL ASSY (SPOKE WHEEL)

S. No.	Part No.	Description	No. off
1.	PEZ 1666-01-4	Arrester F.B. Cover plate	1
2.	PEZ 0858-08-4	Hex. screw M10 × 35	1
3.	PEZ 1261-14-4	Hex. lock nut M10	1
4.	PEZ 1667-18-4	Packing washer	1
5.	PEZ 1663-21-4	Felt washer	1
6.	PEZ 1717-01-2	Speedo hub drive	1
7.	PEZ 0589-01-3	Front wheel axle	1
8.	PEZ 0811-18-4	Washer	1
9.	433-15-131-19	Hex. nut M14 × 1	1
10.	PEZ 0914-28-4	Ball bearing 6203 17 × 40 × 12	1
11.	PEZ 0913-28-4	Ball bearing 6203 17 × 40 × 12	1
12.	PEZ 1267-01-1	Wheel rim	1
13.	PEZ 1268-01-3	Spoke - outer	18
14.	PEZ 1277-01-3	Spoke - inner	18
15.	PEZ 1280-01-3	Nipple	36
16.	PEZ 1636-01-2	Front wheel hub	1
17.	PEZ 1662-01-4	Spacer tube	1
18.	PEZ 1709-01-4	Ring - Spacer Tube	1
19.	PEZ 1659-01-2	Front brake cover plate	1
20.	PEZ 1660-01-4	Front brake cam assy.	1
21.	405-15-388-19	'O' ring	1
22.	267-05-597-19	Washer	2
23.	PEZ 1661-01-4	Front brake lever assy.	1
24.	PEZ 0819-19-4	Spring washer B6	1
25.	PEZ 0837-14-4	Hex. nut M6	1
26.	PEZ 0623-01-4	Tension spring	2
27.	PEZ 0624-01-4	Leading brake shoe	1
28.	PEZ 0654-01-4	Trailing brake shoe	1

REAR WHEEL ASSY



S. No.	Part No.	Description	No. off
26.	PEZ 1261-14-4	Nut M10	1
27.	519-15-119-19	Stover lock nut	1
28.	PEZ 0866-08-4	Hex. screw M8 × 22	1
29.	520-14-143-19	Rubber washer 8.5 × 17 × 1.5	2
30.	PEZ 0813-18-4	Washer A 8.4	1
31.	561-17-111-19	Stover lock nut M8	1
32.	521-18-600-19	Chain 1/2" × 5/16" (112 links)	1
33.	PEZ 0376-01-4	Ring spacer tube	1
34.	PEZ 0654-01-4	Trailing brake shoe assy.	1
35.	PEZ 0698-01-3	Rear wheel assy.	1

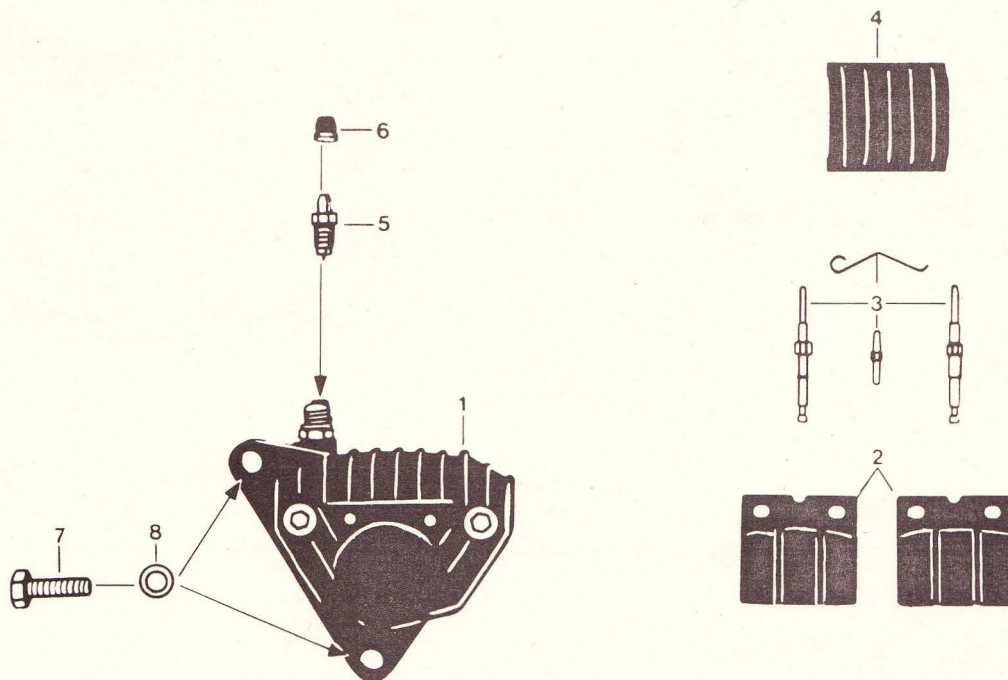
REAR WHEEL ASSY (SPOKE WHEEL)

S. No.	Part No.	Description	No. off
1.	PEZ 0375-01-4	Spacer tube	1
2.	PEZ 0915-28-4	Ball bearing 6202 C3 15 × 35 × 11	1
3.	PEZ 0916-28-4	Ball bearing 6302 15 × 42 × 13	1
4.	521-15-154-14	Rear hub spindle	1
5.	520-15-614-14	Chain tensioner RH	1
6.	PEZ 0838-14-4	Nut M7	8
7.	PEZ 1289-08-4	Hex. screw M7 × 50	2
8.	PEZ 0613-01-3	Stub axle	1
9.	521-15-603-14	Chain tensioner LH	1
10.	PEZ 0811-18-4	Washer A15	1
11.	433-15-131-19	Hex. nut M14 × 1	1
12.	PEZ 0628-01-1	Hub flange	1
13.	PEZ 0917-28-4	Ball bearing 6004 20 × 42 × 12	2
14.	PEZ 0619-30-3	Carrier rubber	1
15.	521-15-137-13	Sprocket 43T	1
16.	PEZ 0618-01-4	Lock plate	3
17.	PEZ 0857-08-4	Hex. screw M7 × 30	6
18.	PEZ 0614-01-2	Brake cover plate	1
19.	PEZ 0624-01-4	Leading brake shoe assy.	1
20.	PEZ 0623-01-4	Tension spring	2
21.	PEZ 0615-01-4	Rear brake cam	1
22.	PEZ 0645-01-4	Rear brake lever assy.	1
23.	521-15-607-14	Anchor plate	1
24.	PEZ 0858-08-4	Hex. screw M10 × 35	1
25.	PEZ 1261-14-4	Nut M10	1
26.	519-15-119-19	Stover lock nut	1

REAR WHEEL ASSY (SPOKE WHEEL)

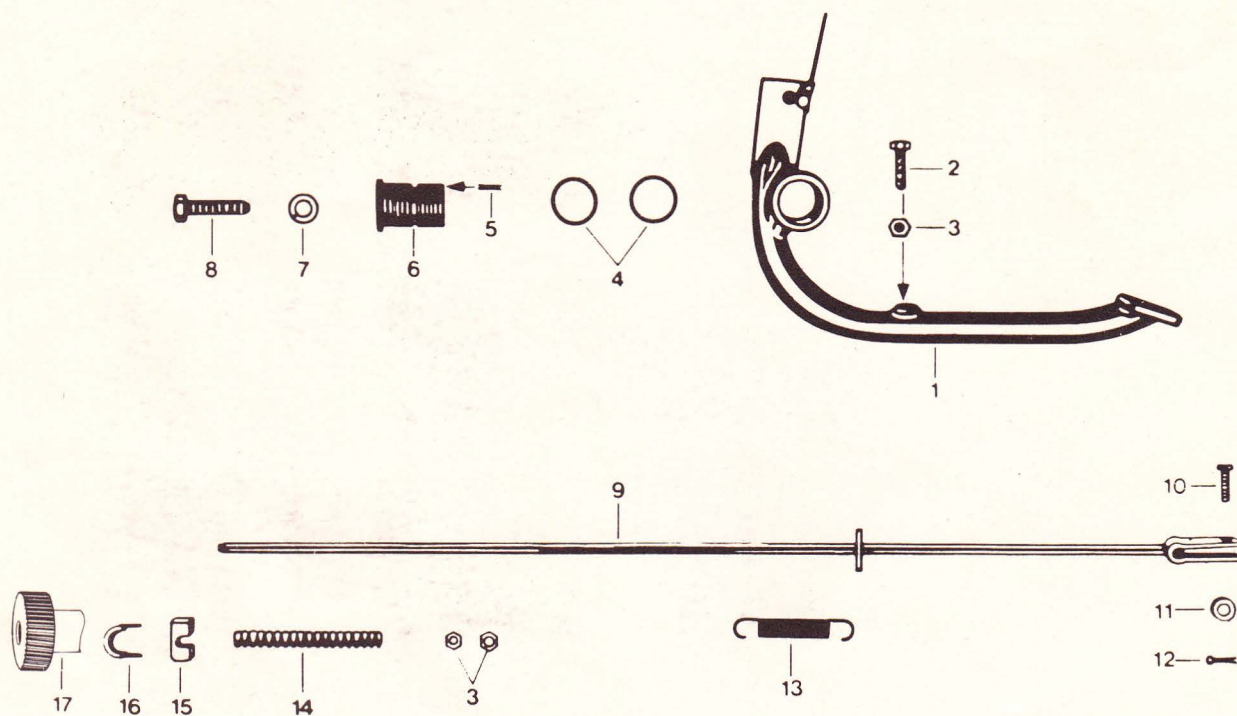
S. No.	Part No.	Description	No. off
27.	PEZ 0866-08-4	Hex. screw M8 × 22	1
28.	520-14-143-19	Rubber washer 8.5 × 17 × 1.5	2
29.	PEZ 0813-18-4	Washer A 8.4	1
30.	561-17-111-19	Stover lock nut M8	1
31.	521-18-600-19	Chain 1/2" × 5/16" (112 links)	1
32.	PEZ 0376-01-4	Ring spacer tube	1
33.	PEZ 0654-01-4	Trailing brake shoe assy.	1
34.	PEZ 0627-01-4	Spacer ring	1
35.	PEZ 1267-01-1	Wheel rim	1
36.	PEZ 1268-01-3	Spoke - outer	18
37.	PEZ 1277-01-3	Spoke - inner	18
38.	PEZ 1280-01-3	Nipple	36
39.	PEZ 1091-01-1	Rear wheel hub	1
40.	PEZ 0643-18-4	Washer	1
41.	PEZ 0629-21-4	Felt washer	1
42.	PEZ 1484-18-4	Washer	1

BRAKE CALIPER ASSY



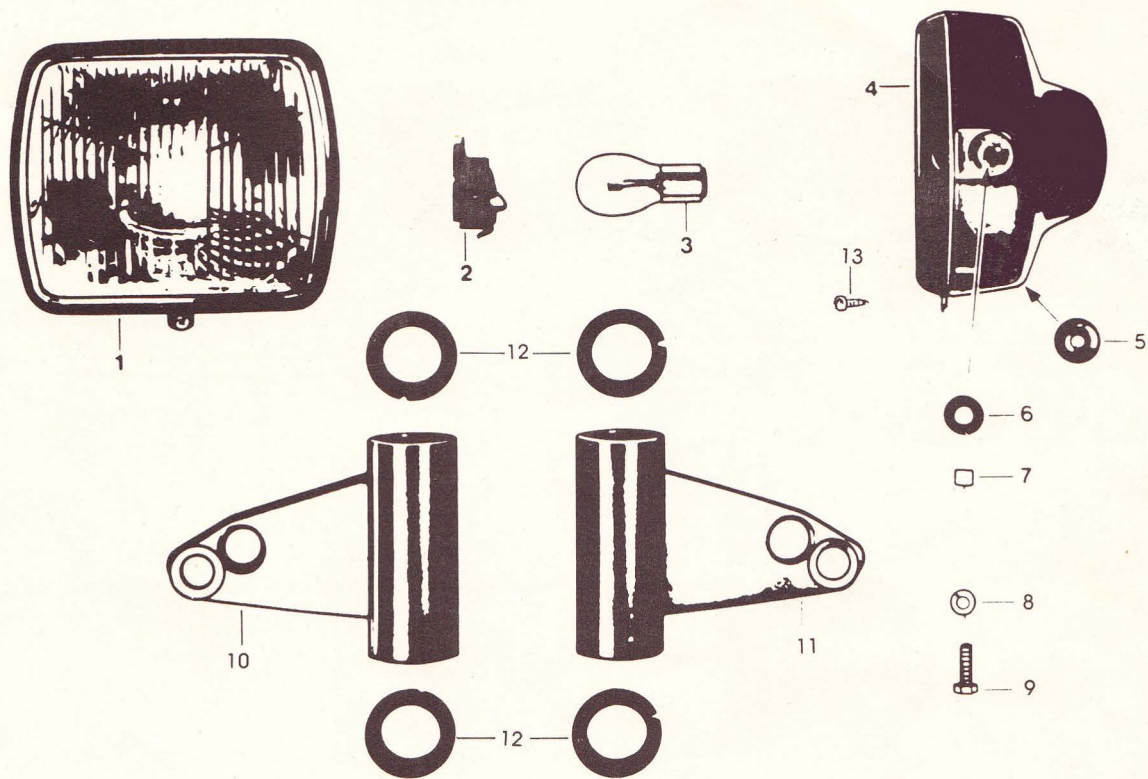
S. No.	Part No.	Description	No. off
1.	521-15-735-12	Brake caliper assy.	1
2.	521-15-172-19	Brake liners set	1
3.	521-15-906-19	Fixing pin set	1
4.	521-15-173-19	Cover	1
5.	521-15-179-19	Nipple	1
6.	521-15-180-19	Rubber cap	1
7.	PEZ0852-08-4	Hex. screw M10 × 30	2
8.	PEZ0817-19-4	Spring washer B10	2

FOOT BRAKE ASSY



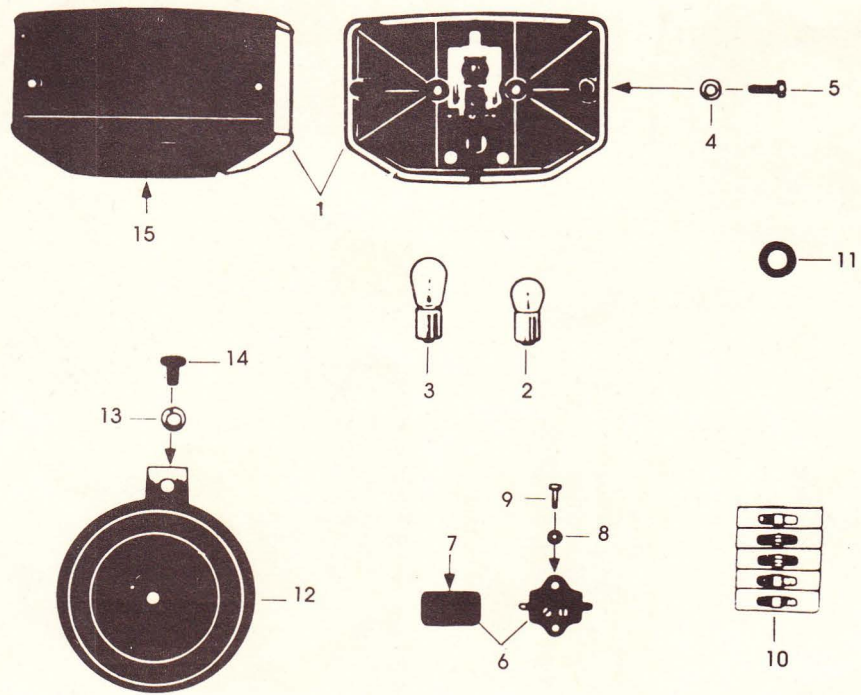
S. No.	Part No.	Description	No. off
1.	520-17-609-13	Foot Brake Lever Assy	1
2.	PEZ 0864-08-4	Hex Screw M6 × 22	1
3.	PEZ 0945-14-4	Hex Nut M6	3
4.	520-17-141-15	Rubber Ring	2
5.	PEZ 0799-26-4	Spring Dowel 3 × 12	1
6.	520-17-179-14	Bearing Sleeve	1
7.	PEZ 0818-19-4	Spring Washer B8	1
8.	PEZ 0865-08-4	Hex Bolt M8 × 35	1
9.	521-17-611-14	Brake Rod Assy	1
10.	519-17-106-15	Clevis Pin	1
11.	PEZ 0810-18-4	Washer A 6.4	1
12.	PEZ 0919-25-4	Split Pin (2 × 12)	1
13.	529-17-105-14	Tension Spring	1
14.	519-17-110-15	Spring	1
15.	521-17-113-15	Trunnion Pin	1
16.	433-17-100-15	Lock Plate	1
17.	448-17-125-14	Knurled Nut	1

HEAD LAMP ASSY



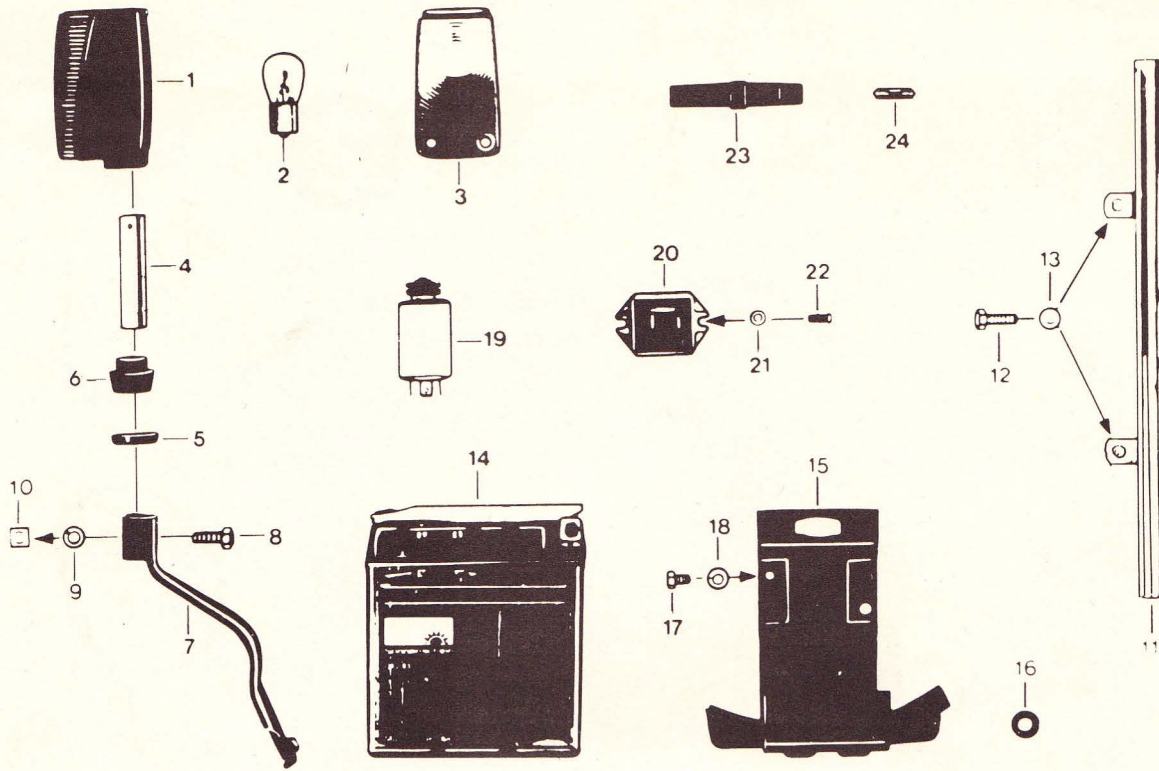
S. No.	Part No.	Description	No. off
1.	PEZ 0741-01-2	Headlamp unit	1
	530-16-772-12	Headlamp light unit	1
2.	PEZ 1039-29-9	Bulb holder	1
3.	PEZ 0926-29-4	Bulb 35/35W	1
4.	PEZ 1531-01-4	Headlamp housing (Red)	1
	PEZ 1532-01-4	Headlamp housing (Silver grey)	1
	PEZ 1765-01-4	Headlamp housing (Blue)	1
5.	517-16-239-15	Cable grommet	1
6.	521-16-324-15	Grommet	2
7.	521-16-327-15	Bush	2
8.	PEZ 0818-19-4	Spring washer B8	2
9.	PEZ 0869-08-4	Hex. screw M8 × 25	2
10.	PEZ 1521-01-4	Headlamp holder LH (Red)	1
	PEZ 1523-01-4	Headlamp holder LH (Silver Grey)	1
	PEZ 1766-01-4	Headlamp holder LH (Blue)	1
11.	PEZ 1522-01-4	Headlamp holder RH (Red)	1
	PEZ 1524-01-4	Headlamp holder RH (Silver grey)	1
	PEZ 1767-01-4	Headlamp holder RH (Blue)	1
12.	521-16-316-15	Guide bush	4
13.	PEZ 1036-12-4	Pan head screw M5 × 12	1

TAIL LAMP ASSY – HORN



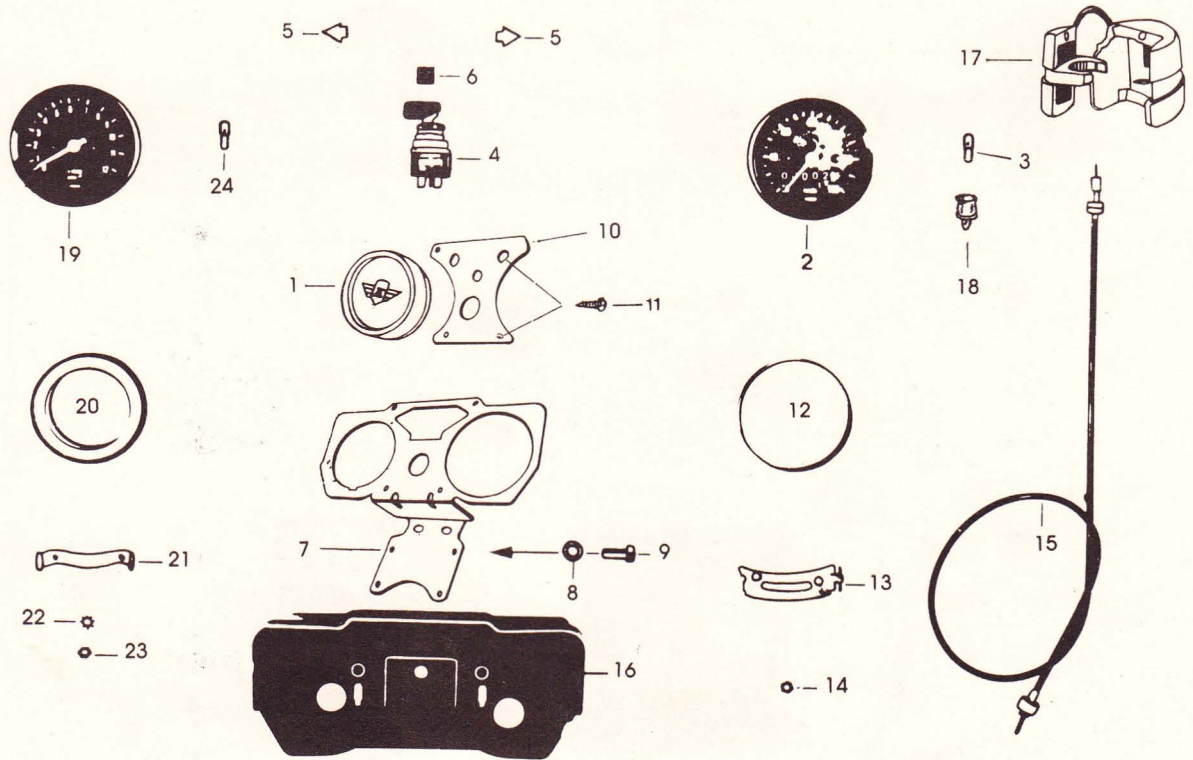
S. No.	Part No.	Description	No. off
1.	PEZ 5003-29-2	Tail lamp assy	1
2.	PEZ 0999-29-4	Tail lamp bulb 6V3W	1
3.	PEZ 0928-29-4	Brake light bulb 6V21W	1
4.	PEZ 0834-21-4	Undulated Washer B6	2
5.	PEZ 0860-08-4	Hex Screw M6 × 18	2
6.	520-16-725-14	Brake light switch	1
7.	520-16-901-19	Cap	1
8.	PEZ 0816-18-4	Washer A 4.3	2
	PEZ 0822-19-4	Spring Washer B4	2
9.	PEZ 0889-10-4	Slotted cheese head screw	2
10.	517-16-364-15	5 Pole connector	3
11.	520-12-282-15	Cable grommet	3
12.	521-16-1700-12	Horn 6V	1
13.	PEZ 0818-19-4	Spring washer B8	1
14.	PEZ 0863-08-4	Hex screw 8 × 12	1
15.	PEZ 1055-20-3	Lens Tail lamp	1

TRAFFICATOR – BATTERY



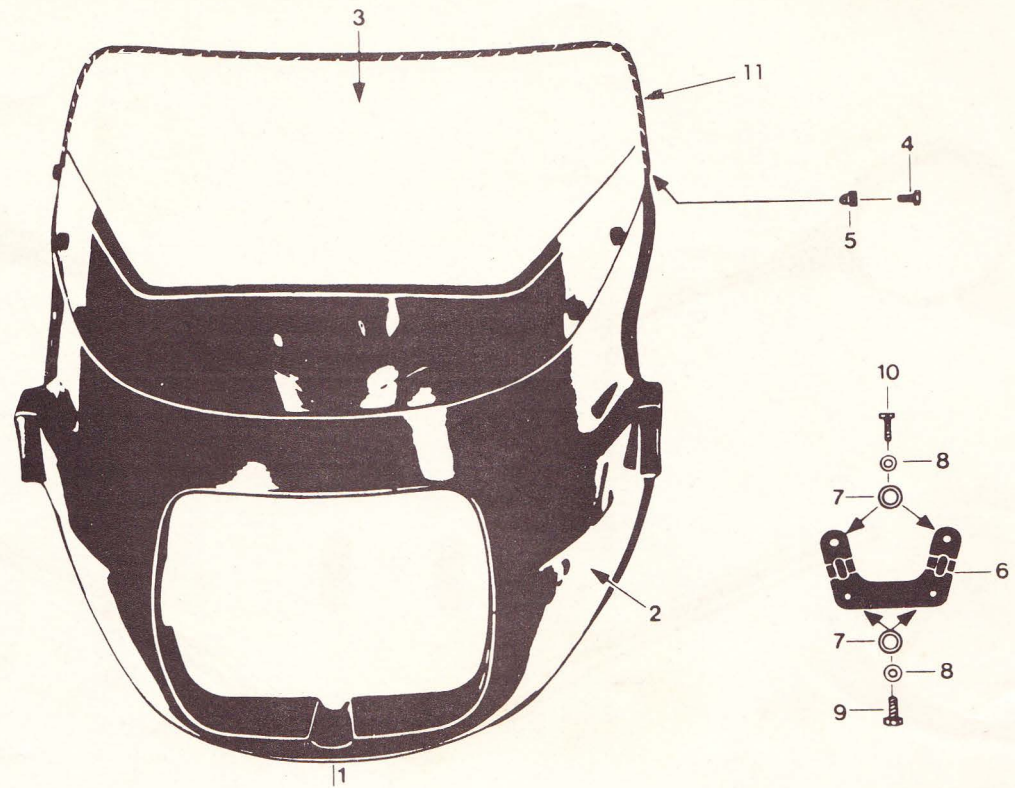
S. No.	Part No.	Description	No. off
1.	448-16-771-13	Trafficator	4
2.	PEZ 0998-29-4	Bulb 6V10W	4
3.	PEZ 1040-29-4	Trafficator lens	4
4.	521-16-328-15	Support tube	2
5.	521-16-329-15	Plastic Bush	2
6.	530-16-120-15	Spacer Rubber	2
7.	521-16-1601-13	Front Trafficator Clamp LH	1
	521-16-1602-13	Front Trafficator Clamp RH	1
8.	PEZ 0872-08-4	Hex Screw M7 × 16	2
9.	PEZ 0823-19-4	Spring Washer B7	2
10.	530-16-123-15	Square Nut M7	2
11.	530-16-1629-14	Trafficator Holder Assy Rear	1
12.	PEZ 0860-08-4	Hex Screw M6 × 18	2
13.	PEZ 0834-21-4	Undulated Washer B6	2
14.	519-16-100-12	Battery 6V12AH	1
15.	521-16-624-13	Battery Holder Complete	1
16.	521-16-344-19	Grommet	1
17.	PEZ 0870-08-4	Hex Screw M6 × 8	2
18.	PEZ 0819-19-4	Spring Washer B6	2
19.	PEZ 1683-29-3	Flasher Unit	1
20.	517-16-382-13	Electronic Power Regulator	1
21.	PEZ 0816-18-4	Washer A 4.3	2
22.	PEZ 0891-10-4	Slotted cheese head screw AM4 × 10	2
23.	521-16-1754-13	Fuse Holder	1
24.	PEZ 0929-29-4	Fuse A8	1

COCKPIT



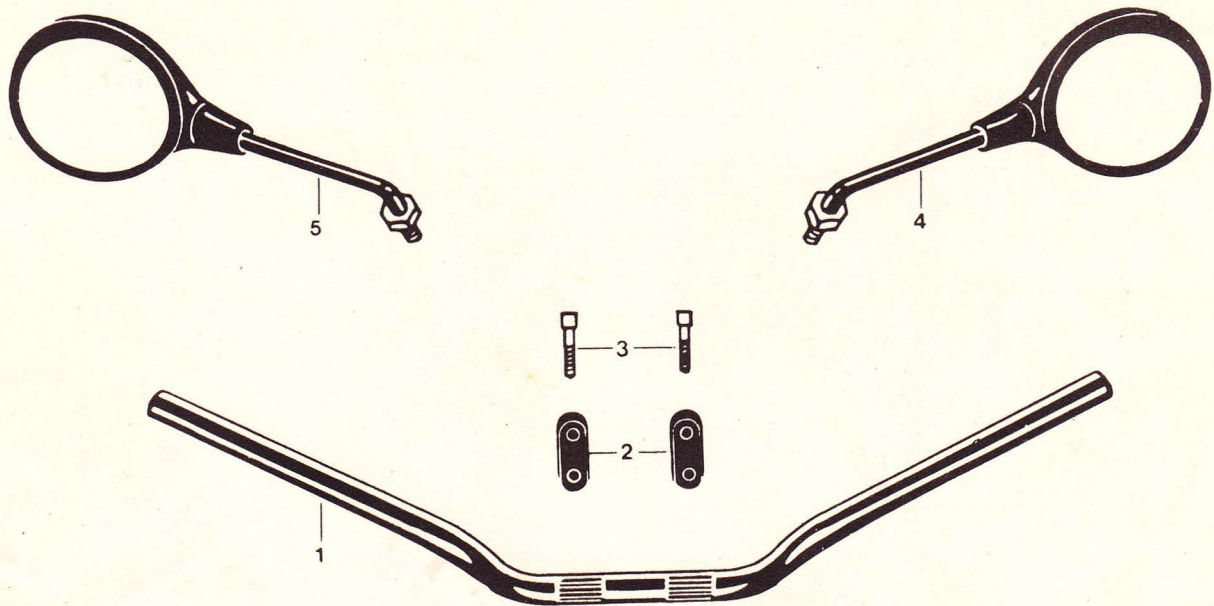
S. No.	Part No.	Description	No. off
1.	529-16-182-12	Moulded cover	1
2.	PEZ 1342-01-2	Speedo meter	1
3.	PEZ 1052-29-4	Bulb 6V	2
4.	530-16-790-13	Ignition switch assy.	1
5.	PEZ 0771-29-3	Arrow signal lamp	2
6.	PEZ 0769-29-3	Signal lamp blue	1
7.	521-16-1611-13	Support bracket assy.	1
8.	PEZ 0818-19-4	Spring washer B8	2
9.	PEZ 0871-08-4	Hex. screw M8 × 18	2
10.	530-16-134-12	Plate	1
11:	PEZ 0897-12-4	Pan head screw with recessed head BZ 4.8 × 16	4
12.	529-16-160-15	Spacer ring	1
13.	PEZ 1341-01-4	Fixing bracket	1
14.	PEZ 1344-17-4	Knurled nut M5	1
15.	PEZ 1343-01-4	Speedometer cable	1
16.	448-16-152-11	Cockpit housing	1
17.	529-16-168-15	Cable guide with clamp	1
18.	PEZ 1053-29-4	Bulb holder	2
19.	PEZ 0763-01-2	RPM Meter complete (optional)	1
20.	521-16-759-15	Damper assy. (optional)	1
21.	PEZ 1044-01-4	Bracket for RPMr (optional)	1
22.	PEZ 0993-20-4	Externally toothed washer (optional)	2
23.	PEZ 0835-14-4	Nut M4 (optional)	2
24.	PEZ 1046-29-4	Bulb 6V (optional)	1

WIND SHIELD ASSY



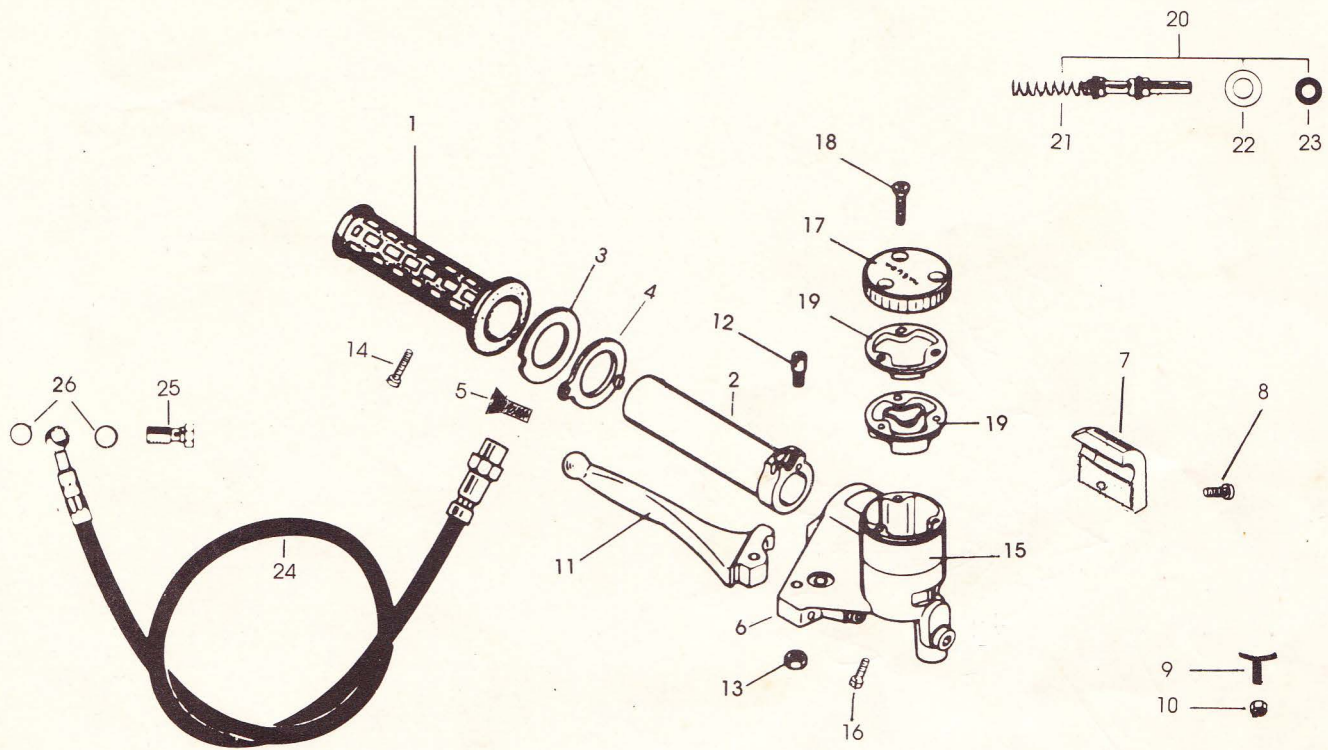
S. No.	Part No.	Description	No. off
1.	530-19-701-11	Windshield assy. (optional)	1
2.	PEZ 1546-01-4	Windshield bottom (red) (Optl.)	1
	PEZ 1547-01-4	Windshield bottom (grey) (Optl.)	1
	PEZ 1771-01-4	Windshield bottom (blue) (Optl.)	1
3.	530-19-117-11	Windshield top (Optl.)	1
4.	PEZ 0893-11-4	Panhead screw AM6 × 12 (Optl.)	9
5.	PEZ 0844-17-4	Dome nut M6 (Optl.)	9
6.	521-19-612-13	Wind shield bottom clamp assy.	1
7.	PEZ 0824-18-4	Washer A 6.4	4
8.	PEZ 0819-19-4	Spring washer B6	4
9.	PEZ 0896-12-4	Pan head screw M6 × 16	2
10.	PEZ 0860-08-4	Hex. screw M6 × 18	2
11.	530-19-119-15	Beading (optional)	1

HANDLE BAR – MIRRORS



S. No.	Part No.	Description	No. off
1.	521-13-109-11	Handle Bar	1
2.	521-13-108-94	Handle Bar Clamp	2
3.	PEZ 0874-09-4	Hex Socket Head Cap Screw M8 × 35	4
4.	529-21-715-12	Rear View Mirror RH	1
5.	529-21-715-12	Rear View Mirror LH (Optional)	1

THROTTLE CONTROL – HYDRAULIC UNIT

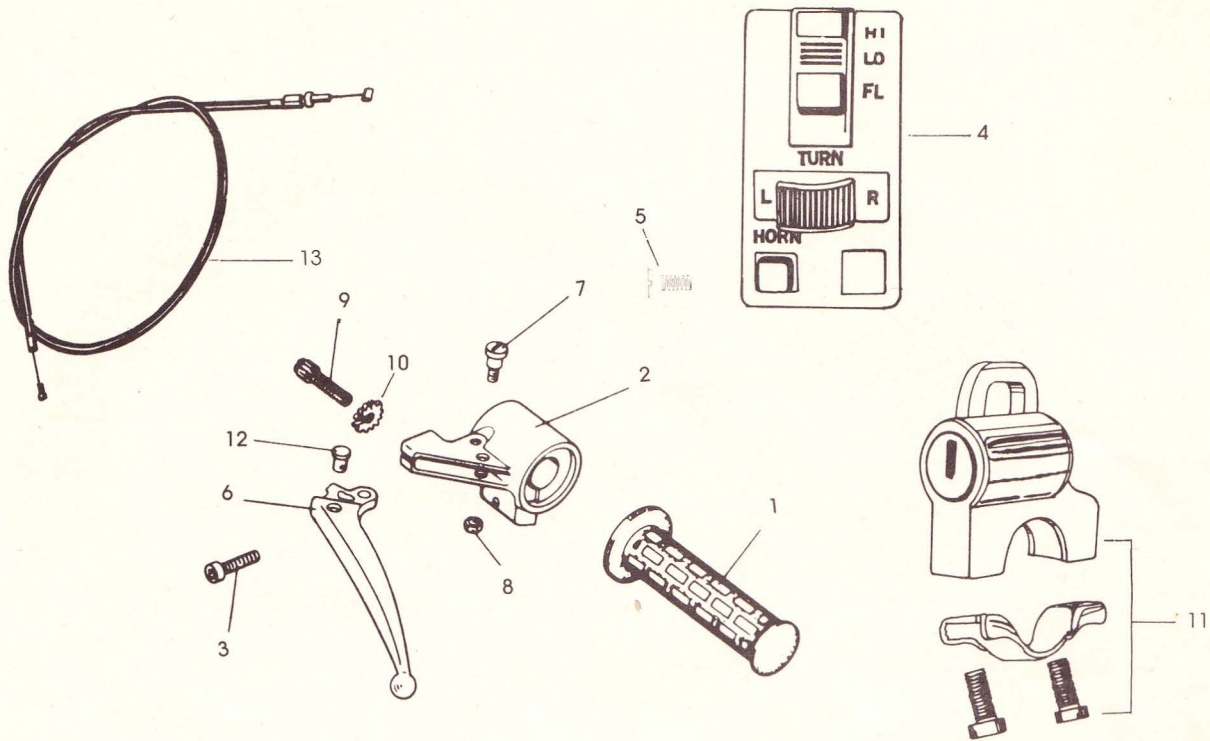


S. No.	Part No.	Description	No. off
1.	PEZ 0634-30-3	Accelerator grip	1
2.	PEZ 0635-32-3	Accelerator tube	1
3.	PEZ 0636-18-4	Plate washer	1
4.	PEZ 0637-01-4	Cover plate	1
5.	PEZ 0903-13-4	Slotted counter sunk head screw M4 × 10	1
6.	PEZ 0638-01-2	Lever bracket RH	1
7.	PEZ 0639-32-3	Lever bracket RH cover	1
8.	PEZ 0895-12-4	Counter sunk head tapping screw with recessed head BZ 4.2 × 18	1
9.	PEZ 0620-01-4	Lock plate assy.	1
10.	PEZ 0841-14-4	Hex. thin nut BM5	1
11.	PEZ 0640-01-4	Handle lever RH	1
12.	PEZ 0641-13-4	Special locking screw M6	1
13.	PEZ 0631-17-4	Special locking nut M6	1
14.	PEZ 0879-09-4	Hexagon socket head cap screw M6 × 16	1
15.	PEZ 0632-01-4	Front hydraulic brake unit - comp.	1
16.	PEZ 0880-09-4	Hex. socket head cap screw M5 × 16	2
17.	530-17-928	Cover (brake fluid container)	1
18.	530-17-926	Screw	3
19.	530-17-927	Diaphragm with washer	1
20.	530-17-707-19	Hydraulic brake master cylinder assy.	1
21.	530-17-908	Master cylinder spring	1
22.	530-17-906	Washer 10 × 22	1
23.	530-17-905	'O' ring	1
24.	521-17-706	Brake hose	1
25.	530-17-911	Banjo screw M10 × 1	1
26.	530-17-912	Copper washer 10 × 14	2

HANDLE BAR CONTROLS R.H. (SPOKE WHEEL)

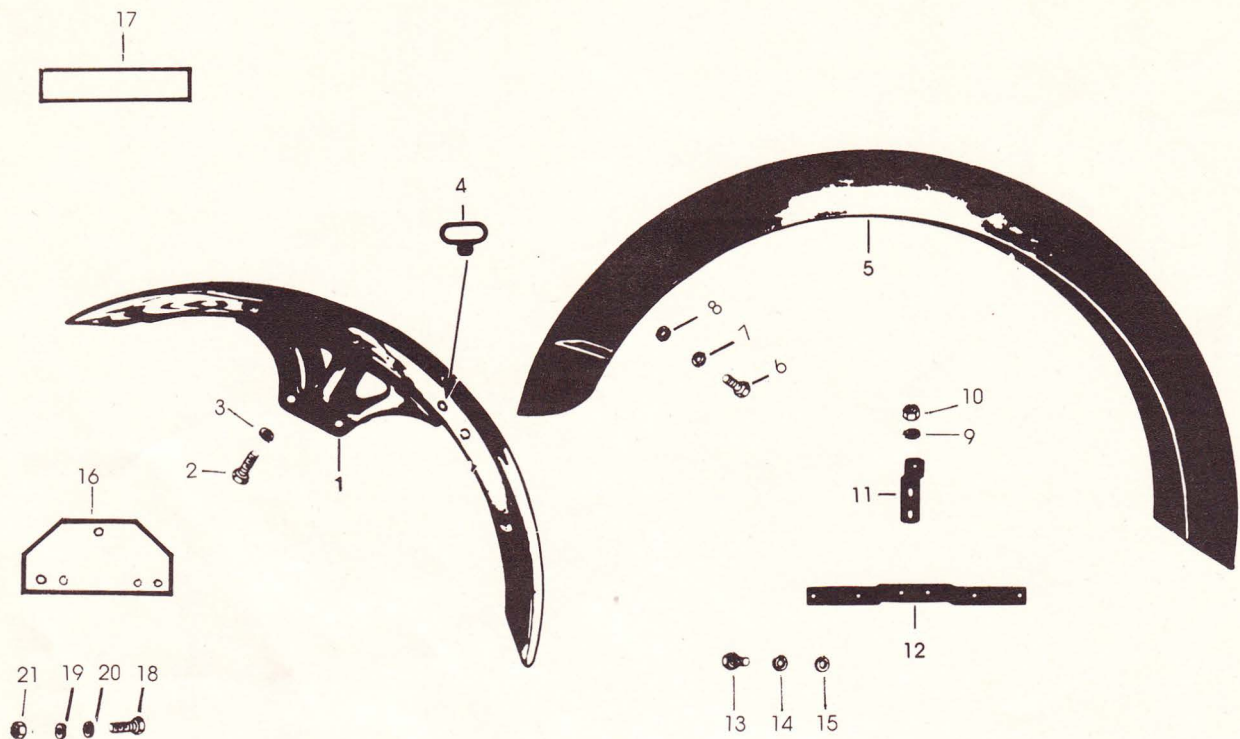
S. No.	Part No.	Description	No. off
1.	PEZ 0634-30-3	Accelerator grip	1
2.	PEZ 1673-32-4	Accelerator tube	1
3.	PEZ 0937-11-4	Slotted pan head screw AM6 × 15	1
4.	PEZ 1670-01-2	Lever bracket RH	1
5.	PEZ 1680-32-4	Lever bracket RH cover	1
6.	PEZ 1679-12-4	Counter sunk head screw	1
7.	PEZ 1671-01-4	Hand lever RH	1
8.	PEZ 1681-01-4	Hand brake light return spring	1
9.	PEZ 0715-13-4	Hand lever fixing screw M5	1
10.	PEZ 1027-16-4	Self lock nut M5	1
11.	428-17-115-15	Soldered nipple attachment	1
12.	PEZ 1669-01-4	Front brake cable	1
13.	PEZ 1740-01-4	Throttle cable assy.	1

HANDLE BAR CONTROLS L.H.



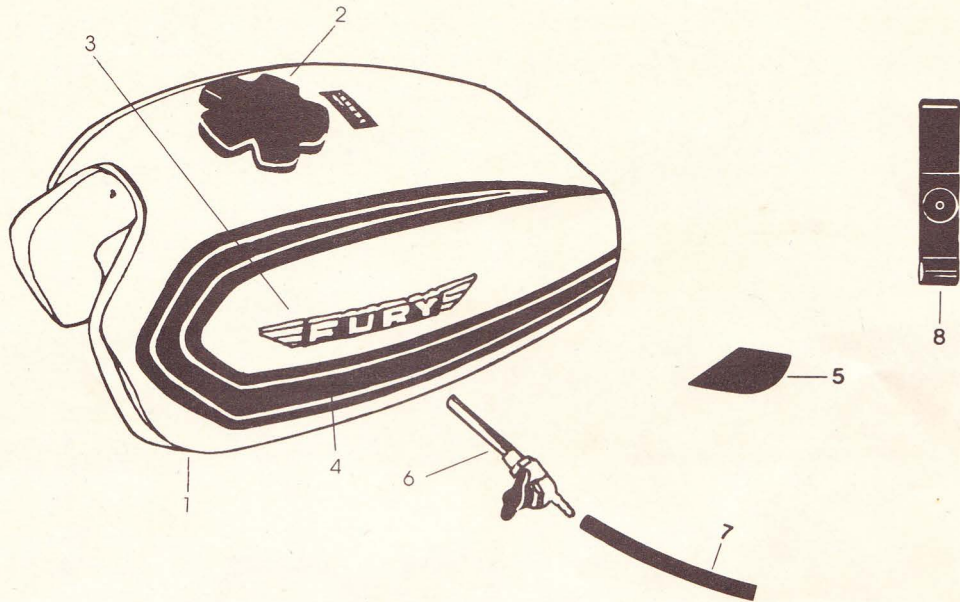
S. No.	Part No.	Description	No. off
1.	530-17-107-14	Hand grip	1
2.	PEZ 0584-01-3	Lever Bracket LH	1
3.	PEZ 0879-09-4	Hex Socket Head Cap Screw M6 × 16	1
4.	530-16-1757-13	Dimmer Switch Assy	1
5.	PEZ 0904-13-4	Slotted Counter Sunk Head Screw M4 × 20	1
6.	PEZ 0586-01-4	Hand Lever LH	1
7.	PEZ 0630-13-4	Special Cheese Head Screw M6	1
8.	PEZ 0631-17-4	Special Lock Nut M6	1
9.	PEZ 0588-13-4	Adjusting Screw M7	1
10.	PEZ 0587-17-4	Adjusting nut M7	1
11.	PEZ 1591-01-4	Helmet lock assy	1
12.	428-17-115-15	Coldered Nipple Attachment	1
13.	521-17-619-19	Clutch Cable Assy	1

MUDGUARDS – NUMBER PLATES



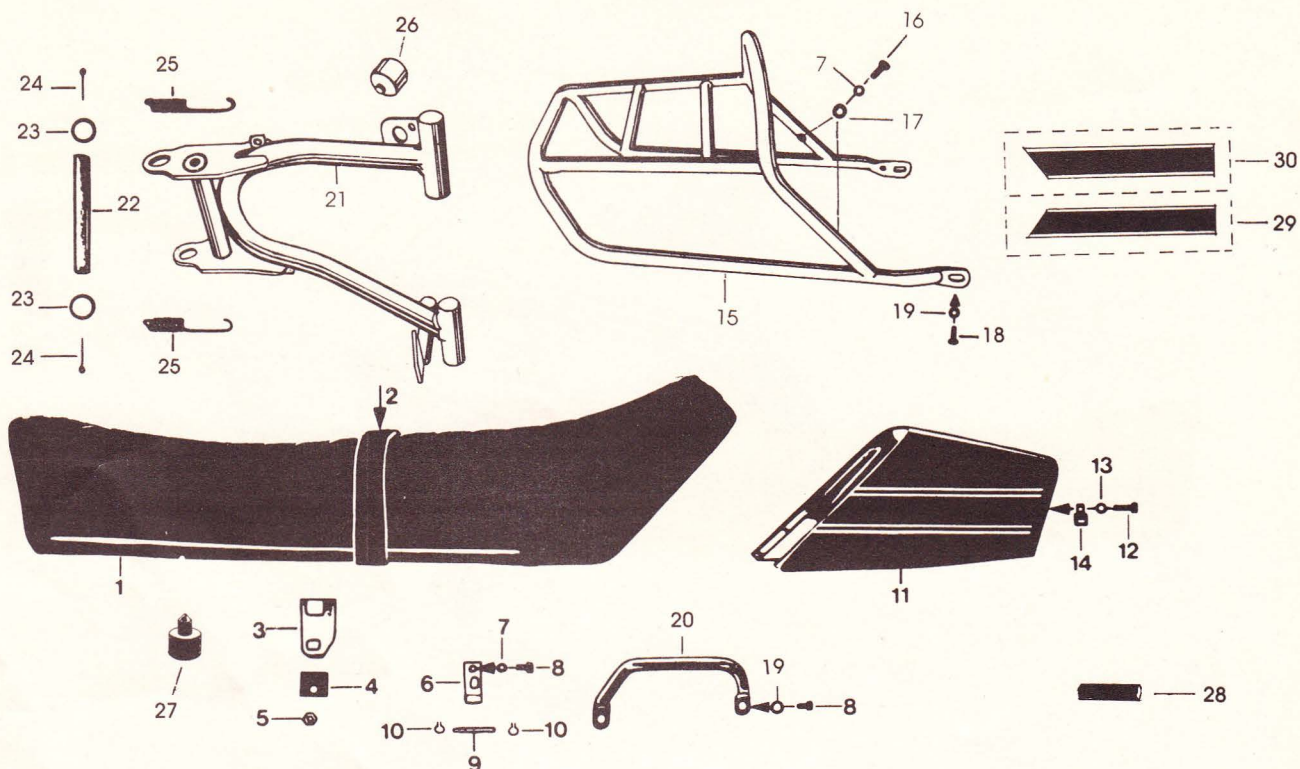
S. No.	Part No.	Description	No. off
1.	PEZ 1449-01-1	Front mudguard assy.	1
2.	PEZ 0853-08-4	Hex. screw M8 × 16	4
3.	PEZ 0825-20-4	Externally toothed washer A 8.4	4
4.	530-19-101-14	Guide grommet	2
5.	PEZ 1715-01-4	Rear Mudguard (Red)	1
	PEZ 1716-01-4	Rear Mudguard (Grey)	1
	PEZ 1770-01-4	Rear Mudguard (Blue)	1
6.	PEZ 0845-08-4	Hex. screw M6 × 16	5
7.	PEZ 0824-18-4	Washer A 6.4	9
8.	PEZ 0819-19-4	Spring washer B6	3
9.	PEZ 0810-18-4	Washer A 6.4	2
10.	517-22-111-19	Stover lock nut M6	2
11.	521-19-113-14	Rear number plate holder top	1
12.	521-19-114-13	Rear number plate holder bottom	1
13.	PEZ 0892-11-4	Slotted pan head screw AM6 × 12	4
14.	PEZ 0819-19-4	Spring washer B6	4
15.	PEZ 0945-14-4	Hex. Nut M6	4
16.	PEZ 0667-01-2	Rear number plate	1
17.	PEZ 1298-01-4	Front number plate	1
18.	PEZ 0856-08-4	Hex. screw M5 × 12	5
19.	PEZ 0814-18-4	Washer A 5.3	5
20.	PEZ 0821-19-4	Spring washer B5	5
21.	PEZ 0836-14-4	Hex. Nut M5	5

PETROL TANK



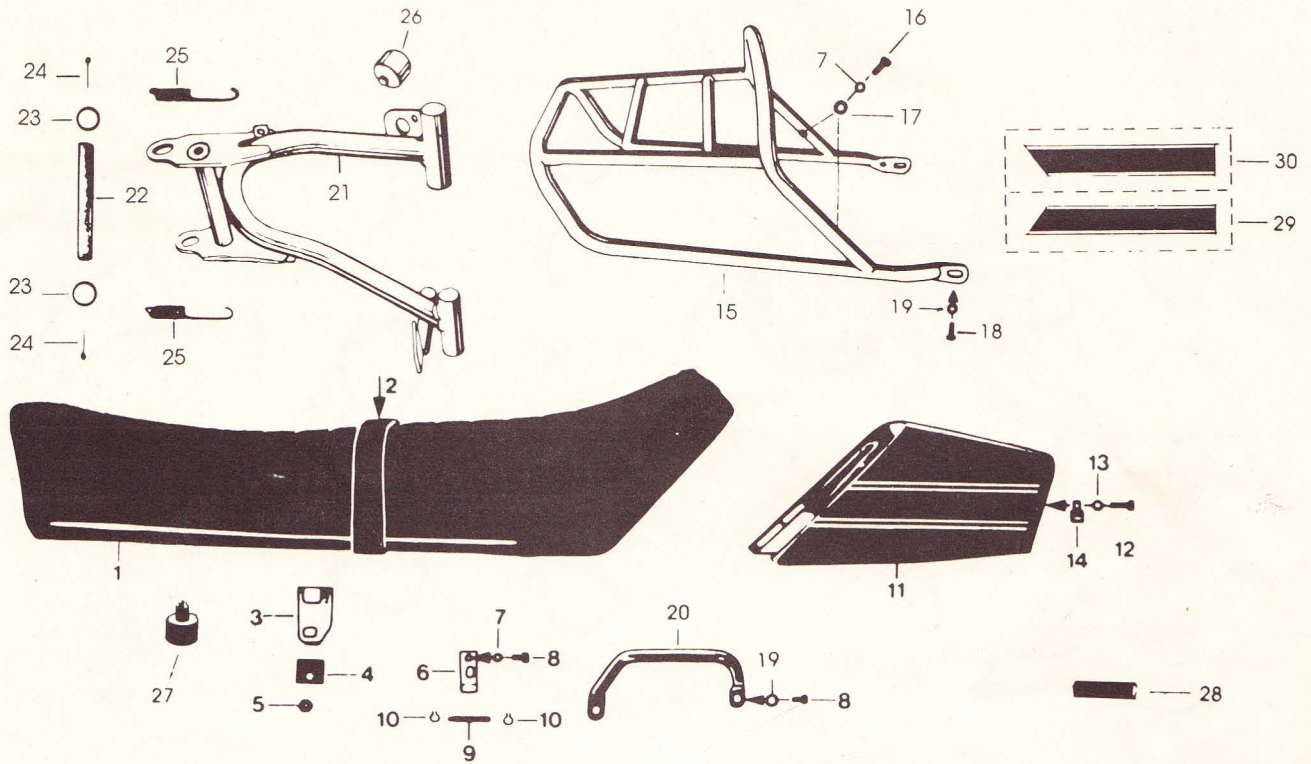
S. No.	Part No.	Description	No. off
1.	PEZ 1535-01-4	Petrol tank (Red)	1
	PEZ 1536-01-4	Petrol tank (Silver Grey)	1
	PEZ 1772-01-4	Petrol tank (Blue)	1
2.	PEZ 1713-01-4	Petrol tank cap with lock	1
3.	PEZ 0720-01-2	Lettering (Fury)	2
4.	521-20-183-12	Petrol tank sticker LH	1
	521-20-184-12	Petrol tank sticker RH	1
5.	521-20-128-15	Rubber pad	2
6.	PEZ 1223-01-2	Fuel tap assy.	1
7.	221-04-178-19	Fuel line	1
8.	521-20-178-14	Rubber pad	1

DUAL SEAT – LUGGAGE CARRIER – CENTRE STAND



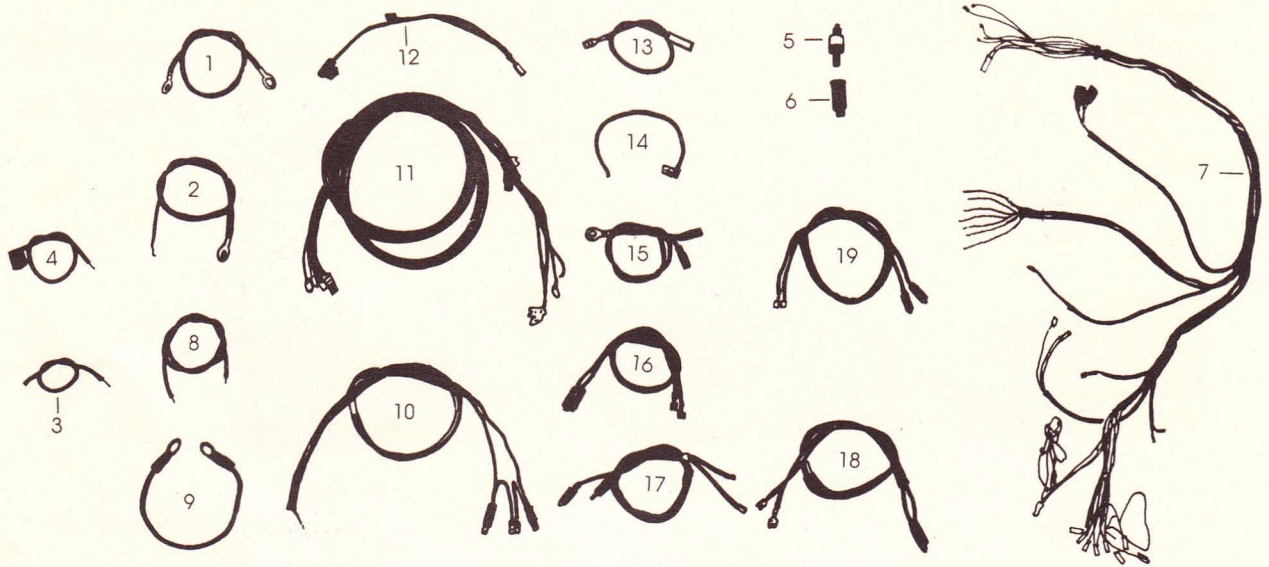
S. No.	Part No.	Description	No. off
1.	PEZ 0600-01-1	Dual seat assembly	1
	PEZ 055-30-0	Seat cover	1
	PEZ 0554-30-0	Seat mattres	1
2.	PEZ 0563-30-3	Centre strap	1
3.	521-21-141-14	Plate spring	1
4.	521-22-146-15	Washer	1
	PEZ 0813-18-4	Washer A 8.4	AR
5.	561-17-111-19	Stover lock nut M8	1
6.	PEZ 0560-01-4	Hinge assy.	2
7.	PEZ 0819-19-4	Spring washer B6	6
8.	PEZ 0861-18-4	Hex. screw M6 × 12	5
9.	521-21-128-15	Hinge Pin	2
10.	PEZ 0793-22-4	Circlip 7 × 0.8	4
11.	PEZ 1527-01-4	Rear fairing assy. (Red)	1
	PEZ 1528-01-4	Rear fairing assy. (Silver grey)	1
	PEZ 1764-01-4	Rear fairing assy. (Blue)	1
12.	PEZ 0860-08-4	Hex. screw M6 × 18	3
13.	PEZ 0833-21-4	Undulated washer A6	3
14.	517-10-199-15	Cable clamp	1
15.	530-21-716-11	Luggage carrier	1
16.	PEZ 0845-08-4	Hex. screw M6 × 16	2
17.	PEZ 0824-18-4	Washer A6.4	2
18.	PEZ 0896-12-4	Screw M6 × 16	2
19.	PEZ 0810-18-4	Washer A 6.4	3
20.	521-23-102-12	Side handle	1
21.	PEZ 1588-01-2	Centre stand assy.	1

DUEL SEAT - LUGGAGE CARRIER - CENTRE STAND



S. No.	Part No.	Description	No. off
22.	521-21-135-15	Bearing tube	1
23.	517-21-113-19	Washer	2
24.	PEZ 0920-25-4	Split pin 3.2 × 28	2
25.	PEZ 1607-01-5	Tension spring	2
26.	521-21-140-15	Rubber damper	1
27.	PEZ 0557-30-4	Rubber rest	1
28.	530-16-107-15	Protective tube	1
29.	521-21-143-13	Rear fairing sticker LH	1
30.	521-21-144-13	Rear fairing sticker RH	1

CABLE HARNESS



S. No.	Part No.	Description	No. off
1.	521-16-660-14	Cable	1
2.	521-16-1634-15	Cable (cable connector)	1
3.	PEZ 1747-29-4	Battery cable (neg.)	1
4.	PEZ 1748-29-4	Battery cable (posi.)	1
5.	521-16-337-14	Hand brake light switch	1
6.	521-16-338-14	Rubber cap	1
7.	PEZ 1746-29-0	Main cable set	1
8.	285-07-171-15	Black/Red Cable	1
9.	561-16-631-15	Earthing cable (engine mounting)	1
10.	521-16-1604-13	Brake light cable	1
11.	521-16-1605-12	Taillamp & trafficator cable	1
12.	521-16-678-14	Power regulator cable set	1
13.	530-16-611-15	Power regulator cable	1
14.	521-16-683-15	Earthing cable	1
15.	529-16-627-14	Earthing cable	1
16.	530-16-656-13	Front trafficator LH cable	1
17.	530-16-657-13	Front trafficator RH cable	1
18.	530-16-658-13	Rear trafficator LH cable	1
19.	530-16-659-13	Rear trafficator RH cable	1

FURY NUMERICAL INDEX

PART NUMBER	PAGE No.	S. No.	PART NUMBER	PAGE No.	S. No.
221 04 178 19	33	007	284 05 119 13	10	013
250 01 229 14	03	011	284 05 603 15	01	023
261 06 155 15	11	10	284 06 104 15	11	008
265 05 175	17	007	284 07 124 19	12	015
265 05 175 19	09	002	285 01 114 12	05	001
265 05 176	17	007	285 01 115 12	05	002
265 05 176 19	09	002	285 01 152 19	02	002
265 05 177 19	09	002	285 01 180 15	04	002
265 05 179 19	09	002	285 01 181 15	04	021
265 05 203 15	01	003	285 01 183 15	02	012
265 05 245 19	01	008	285 01 192 19	02	009
265 05 255 19	01	007	285 01 192 19	05	005
265 05 255 19	09	013	285 01 194 15	02	008
265 05 256 19	09	013	285 01 204 15	02	013
265 05 257 19	09	013	285 01 206 11	02	001
265 06 104 15	04	008	285 01 207 11	03	001
265 06 106 15	04	009	285 01 210 19	02	007
265 06 109 15	04	012	285 01 210 19	03	006
265 06 112 15	04	004	285 01 211 19	02	007
265 06 127 14	11	007	285 01 211 19	03	006
265 06 202 15	11	009	285 01 212 19	02	007
265 06 602 14	04	003	285 01 212 19	03	006
267 01 153 14	03	002	285 01 220 15	03	007
267 05 102 15	09	023	285 01 224 19	02	004
267 05 104 15	09	002	285 01 231 15	01	019
267 05 112 14	10	018	285 01 232 15	04	001
267 05 113 15	10	019	285 01 233 15	04	019
267 05 125 15	10	004	285 01 757 15	02	003
267 05 126 15	10	005	285 02 204 19	06	014
267 05 129 15	03	003	285 03 701 15	06	020
267 05 130 15	10	021	285 05 151 19	09	008
267 05 244 19	10	010	285 05 169 13	01	004
267 05 310 19	09	018	285 05 256 14	10	011
267 05 312 19	09	018	285 05 299 14	01	016
267 05 313 19	09	018	285 05 300 19	01	015
267 05 315 19	09	018	285 05 302 19	01	014
267 05 328 14	01	022	285 05 322 19	10	017
267 05 334 15	01	006	285 05 325 15	04	015
267 05 585 14	10	008	285 05 330 14	09	003
267 05 586 15	10	007	285 05 341 15	09	021
267 05 597 19	18	022	285 05 346 15	09	017
276 05 119 15	09	020	285 05 347 13	01	001
276 05 198 19	09	007	285 05 618 15	10	002
278 05 100 14	10	012	285 05 673 14	09	015
280 05 175 14	01	013	285 05 677 14	03	004
280 05 175 14	10	015	285 05 710 13	10	001
281 06 114 19	04	005	285 06 101 14	11	001
281 06 115 19	04	005	285 06 107 15	11	011
282 07 101 15	12	011	285 06 108 14	11	012
283 05 149 14	01	005	285 06 111 15	11	016
283 05 156 19	01	018	285 06 112 15	11	017
283 05 157 19	01	018	285 06 113 15	11	018
283 05 165 14	10	014	285 06 114 15	11	019
283 05 168 14	01	012	285 06 115 15	11	014
283 07 100 15	12	005	285 06 116 15	11	015

PART NUMBER	PAGE No.	S. No.	PART NUMBER	PAGE No.	S. No.
285 06 122 14	11	005	517 20 107 19	13	012
285 06 124 14	11	004	517 21 113 19	34	023
285 06 125 14	11	006	517 22 111 19	32	010
285 06 600 15	11	002	519 12 110 15	15	037
285 06 605 14	11	020	519 15 119 19	16	020
285 07 105 15	12	004	519 15 119 19	19	028
285 07 129 15	12	012	519 15 119 19	20	026
285 07 135 15	12	014	519 16 100 12	25	014
285 07 171 15	35	008	519 17 106 15	22	010
288 01 109 14	02	006	519 17 110 15	22	014
288 01 109 14	03	005	520 10 324 14	08	014
288 02 113 14	05	007	520 10 379 14	08	012
288 02 113 14	06	006	520 10 608 14	08	013
288 02 114 14	05	004	520 10 717 13	08	010
288 02 114 14	06	010	520 12 143 15	15	036
288 02 121 14	06	003	520 12 282 15	24	011
288 02 122 14	06	004	520 14 216 15	16	003
288 02 135 11	06	012	520 14 217 19	16	005
288 02 137 14	06	013	520 14 237 15	16	006
288 02 612 14	06	007	520 14 627 14	14	011
288 02 708 12	06	002	520 14 627 14	16	002
288 03 602 13	06	017	520 15 614 14	19	006
288 09 112 13	09	009	520 15 614 14	20	005
288 09 113 13	09	010	520 16 725 14	24	006
288 09 114 13	09	011	520 16 901 19	24	007
288 09 115 13	09	012	520 17 141 15	22	004
288 09 116 13	09	014	520 17 179 14	22	006
288 09 117 13	09	016	520 17 609 13	22	001
288 09 146 13	01	009	520 18 118 15	14	012
288 09 147 15	01	010	520 18 615 13	14	001
288 09 602 14	09	001	520 18 703 14	14	010
288 05 703 14	09	004	520 22 908 15	07	003
288 06 600 13	11	003	521 10 107 19	13	017
292 03 107 14	06	018	521 10 109 15	13	016
294 03 112 14	06	019	521 10 140 15	13	007
405 15 388 19	04	006	520 10 143 19	19	030
405 15 388 19	05	006	520 10 143 19	20	028
405 15 388 19	18	021	521 10 167 15	13	011
428 17 115 15	30	011	521 10 176 15	13	018
428 17 115 15	31	012	521 10 209 14	13	013
433 15 131	17	010	521 10 772 13	13	003
433 15 131 19	18	009	521 10 623 14	08	015
433 15 131 19	19	012	521 10 722 13	13	002
433 15 131 19	20	011	521 13 108 94	28	002
433 17 100 15	22	016	521 13 109 11	28	001
448 15 136 15	07	005	521 13 110 14	13	008
488 16 152 11	26	016	521 13 111 14	13	010
488 16 770 12	24	001	521 14 114 14	13	021
488 16 771 13	25	001	521 14 115 15	13	024
488 17 125 14	22	017	521 14 611 13	16	019
517 10 181 15	13	004	521 14 619 14	13	019
517 10 199 15	34	014	521 14 620 14	13	020
517 16 239 15	23	005	521 14 709 13	16	014
517 16 364 15	24	010	521 15 137 13	19	016
517 16 382 13	25	020	521 15 137 13	20	015

PART NUMBER	PAGE No.	S. No.	PART NUMBER	PAGE No.	S. No.
521 15 154 14	19	005	521 22 108 15	07	013
521 15 154 14	20	004	521 22 110 15	07	016
521 15 172 19	21	002	521 22 116 15	07	010
521 15 173 19	21	004	521 22 117 15	07	006
521 15 179 19	21	005	521 22 125 15	07	017
521 15 180 19	21	006	521 22 146 15	34	004
521 15 603 14	19	010	521 23 102 12	34	020
521 15 603 14	20	009	529 16 160 15	26	012
521 15 607 14	19	025	529 16 168 15	26	017
521 15 607 14	20	023	529 16 182 12	26	001
521 15 734	17	015	529 16 627 14	35	015
521 15 735 12	21	001	529 17 105 14	22	013
521 15 906 19	21	003	529 21 715 12	28	004
521 16 1601 13	25	007	529 21 715 12	28	005
521 16 1602 3	25	007	530 16 107 15	34	028
521 16 1604 13	35	010	530 16 120 15	25	006
521 16 1605 12	35	011	530 16 123 15	25	010
521 16 1611 13	26	007	530 16 134 12	26	010
521 16 1634 15	35	002	530 16 1629 14	25	011
521 16 1700 12	24	012	530 16 1757 13	31	004
521 16 1754 13	25	023	530 16 611 15	35	013
521 16 316 15	23	012	530 16 656 13	35	016
521 16 324 15	23	006	530 16 657 13	35	016
521 16 327 15	23	007	530 16 658 13	35	017
521 16 328 15	25	004	530 16 659 13	35	018
521 16 329 15	25	005	530 16 772 12	23	001
521 16 337 14	35	005	530 16 790 13	26	004
521 16 338 14	35	006	530 17 107 14	31	001
521 16 344 19	25	016	530 17 707 19	29	020
521 16 624 13	25	015	530 17 905	29	023
521 16 660 14	35	001	530 17 906	29	022
521 16 678 14	35	012	530 17 908	29	021
521 16 683 15	35	014	530 17 911	29	025
521 16 759 15	26	020	530 17 912	29	026
521 17 113 15	22	015	530 17 926	29	018
521 17 611 14	22	009	530 17 927	29	019
521 17 619 19	31	013	530 17 928	29	017
521 17 706	29	024	530 19 101 14	32	004
521 18 600 19	19	033	530 19 117 11	27	003
521 18 600 19	20	031	530 19 119 15	27	011
521 18 601 15	14	006	530 19 126 14	27	012
521 19 113 14	32	011	530 19 701 11	27	001
521 19 114 13	32	012	530 21 716 11	34	015
521 19 612 13	27	006	561 14 530 19	13	014
521 20 128 15	33	005	561 16 631 15	35	009
521 20 178 14	33	008	561 17 111 19	16	018
521 20 183 12	33	004	561 17 111 19	17	019
521 20 184 12	33	004	561 17 111 19	19	032
521 21 128 15	34	009	561 17 111 19	20	030
521 21 135 15	34	022	561 17 111 19	34	005
521 21 140 15	34	026	PEZ 1666 01 4	18	001
521 21 141 14	34	003	PEZ 0241 01 4	33	009
521 21 143 13	34	029	PEZ 0375 01 4	19	002
521 21 144 13	34	030	PEZ 0375 01 4	20	001
521 22 107 14	07	011	PEZ 0376 01 4	19	034

PART NUMBER	PAGE No.	S. No.	PART NUMBER	PAGE No.	S. No.
PEZ 0376 01 4	20	032	PEZ 0639 32 3	29	007
PEZ 0395 30 4	12	022	PEZ 0640 01 4	29	011
PEZ 0504 32 4	12	023	PEZ 0641 13 4	29	012
PEZ 0515 01 0	07	001	PEZ 0642 01 4	17	001
PEZ 0542 22 4	01	002	PEZ 0643 18 4	20	040
PEZ 0544 22 4	01	024	PEZ 0645 01 4	19	023
PEZ 0548 01 3	07	002	PEZ 0645 01 4	20	022
PEZ 0554 30 0	34	001	PEZ 0654 01 4	18	028
PEZ 0555 30 0	34	001	PEZ 0654 01 4	19	035
PEZ 0557 30 4	34	027	PEZ 0654 01 4	20	033
PEZ 0560 01 4	34	006	PEZ 0667 01 2	32	016
PEZ 0563 30 3	34	002	PEZ 0680 01 3	17	011
PEZ 0574 01 3	17	014	PEZ 0698 01 3	19	001
PEZ 0584 01 3	31	002	PEZ 0699 01 3	17	020
PEZ 0586 01 4	31	006	PEZ 0715 13 4	30	009
PEZ 0587 17 4	31	010	PEZ 0720 01 2	33	003
PEZ 0588 13 4	31	009	PEZ 0741 01 2	23	001
PEZ 0589 01 3	17	006	PEZ 0763 01 2	26	019
PEZ 0589 01 3	18	007	PEZ 0769 29 3	26	006
PEZ 0590 01 4	17	008	PEZ 0771 29 3	26	005
PEZ 0594 01 4	17	013	PEZ 0790 23 4	01	017
PEZ 0600 01 1	34	001	PEZ 0791 23 4	15	021
PEZ 0603 30 4	17	012	PEZ 0792 23 4	17	004
PEZ 0606 01 3	17	005	PEZ 0793 22 4	34	010
PEZ 0613 01 3	19	009	PEZ 0794 22 4	04	016
PEZ 0613 01 3	20	008	PEZ 0795 22 4	10	009
PEZ 0614 01 2	19	019	PEZ 0796 24 4	04	007
PEZ 0614 01 2	20	018	PEZ 0799 26 4	04	014
PEZ 0615 01 4	19	022	PEZ 0799 26 4	22	005
PEZ 0615 01 4	20	021	PEZ 0800 26 4	01	011
PEZ 0618 01 4	19	017	PEZ 0801 26 4	03	010
PEZ 0618 01 4	20	016	PEZ 0809 18 4	06	008
PEZ 0619 30 3	19	015	PEZ 0809 18 4	08	003
PEZ 0619 30 3	20	014	PEZ 0810 18 4	16	011
PEZ 0620 01 4	19	009	PEZ 0810 18 4	22	011
PEZ 0623 01 4	18	026	PEZ 0810 18 4	32	009
PEZ 0623 01 4	19	021	PEZ 0810 18 4	34	019
PEZ 0623 01 4	20	020	PEZ 0810 18 4	17	009
PEZ 0624 01 4	18	027	PEZ 0811 18 4	18	008
PEZ 0624 01 4	19	020	PEZ 0811 18 4	19	011
PEZ 0624 01 4	20	019	PEZ 0811 18 4	20	010
PEZ 0627 01 4	20	034	PEZ 0812 18 4	17	018
PEZ 0628 01 1	19	013	PEZ 0813 18 4	07	009
PEZ 0628 01 1	20	012	PEZ 0813 18 4	16	017
PEZ 0629 21 4	20	041	PEZ 0813 18 4	19	031
PEZ 0630 13 4	31	007	PEZ 0813 18 4	20	029
PEZ 0631 17 4	29	013	PEZ 0813 18 4	34	004
PEZ 0631 17 4	31	008	PEZ 0814 18 4	12	019
PEZ 0632 01 4	29	015	PEZ 0814 18 4	12	028
PEZ 0634 30 3	29	001	PEZ 0814 18 4	32	019
PEZ 0634 30 3	30	001	PEZ 0816 18 4	24	008
PEZ 0635 32 3	29	002	PEZ 0816 18 4	25	021
PEZ 0636 18 4	29	003	PEZ 0817 19 4	14	005
PEZ 0637 01 4	29	004	PEZ 0817 19 4	14	008
PEZ 0638 01 2	29	006	PEZ 0817 19 4	21	008

PART NUMBER	PAGE No.	S. No.	PART NUMBER	PAGE No.	S. No.
PEZ 0818 19 4	07	014	PEZ 0846 08 4	03	013
PEZ 0818 19 4	14	003	PEZ 0847 08 4	14	004
PEZ 0818 19 4	22	007	PEZ 0848 08 4	14	002
PEZ 0818 19 4	23	008	PEZ 0849 08 4	14	002
PEZ 0818 19 4	24	013	PEZ 0850 08 4	14	013
PEZ 0818 19 4	26	008	PEZ 0852 08 4	21	007
PEZ 0819 19 4	08	019	PEZ 0853 08 4	32	002
PEZ 0819 19 4	16	012	PEZ 0855 08 4	16	016
PEZ 0819 19 4	18	024	PEZ 0856 08 4	32	018
PEZ 0819 19 4	25	018	PEZ 0857 08 4	19	018
PEZ 0819 19 4	27	008	PEZ 0857 08 4	20	017
PEZ 0819 19 4	32	008	PEZ 0858 08 4	18	002
PEZ 0819 19 4	32	014	PEZ 0858 08 4	19	026
PEZ 0819 19 4	34	007	PEZ 0858 08 4	20	024
PEZ 0820 19 4	16	004	PEZ 0859 08 4	19	024
PEZ 0821 19 4	12	020	PEZ 0860 08 4	24	005
PEZ 0821 19 4	32	020	PEZ 0860 08 4	25	012
PEZ 0822 19 4	24	008	PEZ 0860 08 4	27	010
PEZ 0823 19 4	25	009	PEZ 0860 08 4	34	012
PEZ 0824 18 4	27	007	PEZ 0861 08 4	16	009
PEZ 0824 18 4	32	007	PEZ 0861 18 4	34	008
PEZ 0824 18 4	34	017	PEZ 0863 08 4	07	015
PEZ 0825 20 4	07	008	PEZ 0863 08 4	24	014
PEZ 0825 20 4	32	003	PEZ 0864 08 4	22	002
PEZ 0827 21 4	03	012	PEZ 0865 08 4	22	008
PEZ 0827 21 4	04	010	PEZ 0866 08 4	19	029
PEZ 0828 21 4	04	017	PEZ 0866 08 4	20	027
PEZ 0830 21 4	13	005	PEZ 0867 08 4	07	004
PEZ 0831 21 4	13	022	PEZ 0869 08 4	23	009
PEZ 0832 21 4	07	012	PEZ 0870 08 4	12	025
PEZ 0832 21 4	16	015	PEZ 0870 08 4	25	017
PEZ 0833 21 4	12	026	PEZ 0871 08 4	26	009
PEZ 0833 21 4	34	013	PEZ 0872 08 4	25	008
PEZ 0834 21 4	24	004	PEZ 0873 09 4	06	009
PEZ 0834 21 4	25	013	PEZ 0874 09 4	28	003
PEZ 0835 14 4	11	013	PEZ 0876 09 4	15	031
PEZ 0835 14 4	26	023	PEZ 0877 09 4	15	032
PEZ 0836 14 4	32	021	PEZ 0878 09 4	17	017
PEZ 0837 14 4	18	025	PEZ 0879 09 4	29	014
PEZ 0838 14 4	19	007	PEZ 0879 09 4	31	003
PEZ 0838 14 4	20	006	PEZ 0880 09 4	29	016
PEZ 0839 14 4	06	015	PEZ 0881 10 4	02	010
PEZ 0840 14 4	13	023	PEZ 0882 10 4	03	014
PEZ 0840 14 4	14	007	PEZ 0883 10 4	01	021
PEZ 0840 14 4	14	009	PEZ 0884 10 4	01	020
PEZ 0841 14 4	29	010	PEZ 0886 10 4	04	013
PEZ 0842 14 4	04	011	PEZ 0889 10 4	24	009
PEZ 0843 16 4	15	041	PEZ 0890 10 4	08	018
PEZ 0844 17 4	27	005	PEZ 0891 10 4	25	022
PEZ 0845 08 4	10	016	PEZ 0892 11 4	04	018
PEZ 0845 08 4	32	006	PEZ 0892 11 4	32	013
PEZ 0845 08 4	34	016	PEZ 0893 11 4	27	004

PART NUMBER	PAGE No.	S. No.	PART NUMBER	PAGE No.	S. No.	
PEZ 0894	11 4	10	PEZ 1071	27 4	13	006
PEZ 0895	12 4	29	PEZ 1091	01 1	20	039
PEZ 0896	12 4	27	PEZ 1104	09 4	06	016
PEZ 0896	12 4	34	PEZ 1174	32 4	02	005
PEZ 0897	12 4	26	PEZ 1223	01 2	33	006
PEZ 0898	13 4	04	PEZ 1256	10 4	12	016
PEZ 0899	13 4	08	PEZ 1257	13 4	12	003
PEZ 0901	13 4	08	PEZ 1258	24 4	06	005
PEZ 0903	13 4	29	PEZ 1261	14 4	18	003
PEZ 0904	13 4	31	PEZ 1261	14 4	19	027
PEZ 0905	28 4	09	PEZ 1261	14 4	20	025
PEZ 0906	28 4	13	PEZ 1267	01 1	18	012
PEZ 0908	28 4	03	PEZ 1267	01 1	20	035
PEZ 0909	28 4	03	PEZ 1268	01 3	18	013
PEZ 0910	28 4	02	PEZ 1268	01 3	20	036
PEZ 0911	28 4	04	PEZ 1271	30 4	12	007
PEZ 0912	28 4	09	PEZ 1272	29 4	12	009
PEZ 0913	28 4	17	PEZ 1273	20 4	12	008
PEZ 0913	28 4	18	PEZ 1274	01 4	12	002
PEZ 0914	28 4	17	PEZ 1275	29 2	12	001
PEZ 0914	28 4	18	PEZ 1276	29 4	12	010
PEZ 0915	28 4	19	PEZ 1277	01 3	18	014
PEZ 0915	28 4	20	PEZ 1277	01 3	20	036
PEZ 0916	28 4	19	PEZ 1280	01 3	18	015
PEZ 0916	28 4	20	PEZ 1280	01 3	20	038
PEZ 0917	28 4	19	PEZ 1289	08 4	19	008
PEZ 0917	28 4	20	PEZ 1289	08 4	20	007
PEZ 0918	28 4	10	PEZ 1298	01 4	32	017
PEZ 0919	25 4	22	PEZ 1315	01 4	12	024
PEZ 0920	25 4	34	PEZ 1341	01 4	26	013
PEZ 0921	27 4	10	PEZ 1342	01 2	26	002
PEZ 0926	29 4	23	PEZ 1343	01 4	26	015
PEZ 0928	29 4	24	PEZ 1344	17 4	26	014
PEZ 0929	29 4	25	PEZ 1373	01 0	06	001
PEZ 0930	31 4	12	PEZ 1374	08 4	12	027
PEZ 0932	31 4	08	PEZ 1413	01 2	15	033
PEZ 0933	31 4	80	PEZ 1416	01 4	15	024
PEZ 0937	11 4	30	PEZ 1417	30 4	15	023
PEZ 0945	14 4	08	PEZ 1419	01 4	15	008
PEZ 0945	14 4	22	PEZ 1420	01 4	15	022
PEZ 0945	14 4	32	PEZ 1421	30 4	15	006
PEZ 0946	14 4	07	PEZ 1422	01 4	15	007
PEZ 0993	20 4	26	PEZ 1423	01 2	15	002
PEZ 0998	29 4	25	PEZ 1424	01 2	15	003
PEZ 0999	29 4	24	PEZ 1425	24 4	15	005
PEZ 1027	16 4	30	PEZ 1426	30 4	15	004
PEZ 1036	12 4	23	PEZ 1427	18 4	15	114
PEZ 1039	29 9	23	PEZ 1428	01 4	15	016
PEZ 1040	29 4	25	PEZ 1429	01 4	15	015
PEZ 1044	01 4	26	PEZ 1430	01 4	15	018
PEZ 1046	29 4	26	PEZ 1432	01 4	15	020
PEZ 1052	29 4	26	PEZ 1433	01 4	15	011
PEZ 1053	29 4	26	PEZ 1434	01 4	15	012
PEZ 1055	20 3	24	PEZ 1435	01 4	15	009
PEZ 1057	29 4	12	PEZ 1436	18 4	15	034

PART NUMBER	PAGE No.	S. No.	PART NUMBER	PAGE No.	S. No.
PEZ 1437 09 4	15	035	PEZ 1694 08 4	15	040
PEZ 1438 01 4	15	030	PEZ 1697 01 4	08	017
PEZ 1439 01 4	15	010	PEZ 1700 01 4	13	001
PEZ 1440 22 4	15	017	PEZ 1701 08 4	17	016
PEZ 1449 01 1	32	001	PEZ 1705 01 4	08	005
PEZ 1453 01 4	09	019	PEZ 1709 01 4	18	018
PEZ 1456 14 4	15	013	PEZ 1712 01 1	15	001
PEZ 1466 18 4	15	038	PEZ 1713 01 4	33	002
PEZ 1484 18 4	20	042	PEZ 1715 01 4	32	005
PEZ 1517 01 4	13	015	PEZ 1716 01 4	32	005
PEZ 1518 01 4	13	015	PEZ 1717 01 2	18	006
PEZ 1519 01 4	13	015	PEZ 1733 01 4	08	021
PEZ 1520 01 4	13	015	PEZ 1738 01 4	05	003
PEZ 1521 01 4	23	010	PEZ 1738 01 4	06	011
PEZ 1522 01 4	23	011	PEZ 1740 01 4	30	013
PEZ 1523 01 4	23	010	PEZ 1741 31 5	05	008
PEZ 1524 01 4	23	011	PEZ 1741 31 5	08	001
PEZ 1527 01 4	34	011	PEZ 1742 01 3	06	001
PEZ 1528 01 4	34	011	PEZ 1746 29 0	35	007
PEZ 1531 01 4	23	004	PEZ 1747 29 4	35	003
PEZ 1532 01 4	23	004	PEZ 1748 29 4	35	004
PEZ 1535 01 4	33	001	PEZ 1750 32 4	08	007
PEZ 1536 01 4	33	001	PEZ 1763 01 4	13	015
PEZ 1539 01 2	08	002	PEZ 1764 01 4	34	011
PEZ 1545 30 4	08	008	PEZ 1765 01 4	23	004
PEZ 1546 01 4	27	002	PEZ 1766 01 4	23	010
PEZ 1547 01 4	27	002	PEZ 1767 01 4	23	011
PEZ 1588 01 2	34	021	PEZ 1769 01 4	13	015
PEZ 1591 01 4	31	011	PEZ 1770 01 4	32	005
PEZ 1607 01 5	34	025	PEZ 1771 01 4	27	002
PEZ 1636 01 2	18	016	PEZ 1772 01 4	33	001
PEZ 1637 01 1	16	007			
PEZ 1640 30 4	16	008			
PEZ 1641 30 4	16	010			
PEZ 1642 01 4	16	013			
PEZ 1648 01 4	16	001			
PEZ 1659 01 2	18	019			
PEZ 1660 01 4	18	020			
PEZ 1661 01 4	18	023			
PEZ 1662 01 4	18	017			
PEZ 1663 21 4	18	005			
PEZ 1667 18 4	18	004			
PEZ 1668 10 4	15	039			
PEZ 1669 01 4	30	012			
PEZ 1670 01 2	30	004			
PEZ 1671 01 4	30	007			
PEZ 1673 32 4	30	002			
PEZ 1679 12 4	30	006			
PEZ 1680 32 4	30	005			
PEZ 1681 01 4	30	008			
PEZ 1683 29 3	25	019			
PEZ 1685 01 4	12	021			
PEZ 1686 30 4	08	020			
PEZ 1688 01 4	12	017			
PEZ 1689 10 4	12	018			



THE ENFIELD INDIA LIMITED

**ENFIELD HOUSE
115, ANNA SALAI
MADRAS-600 015**