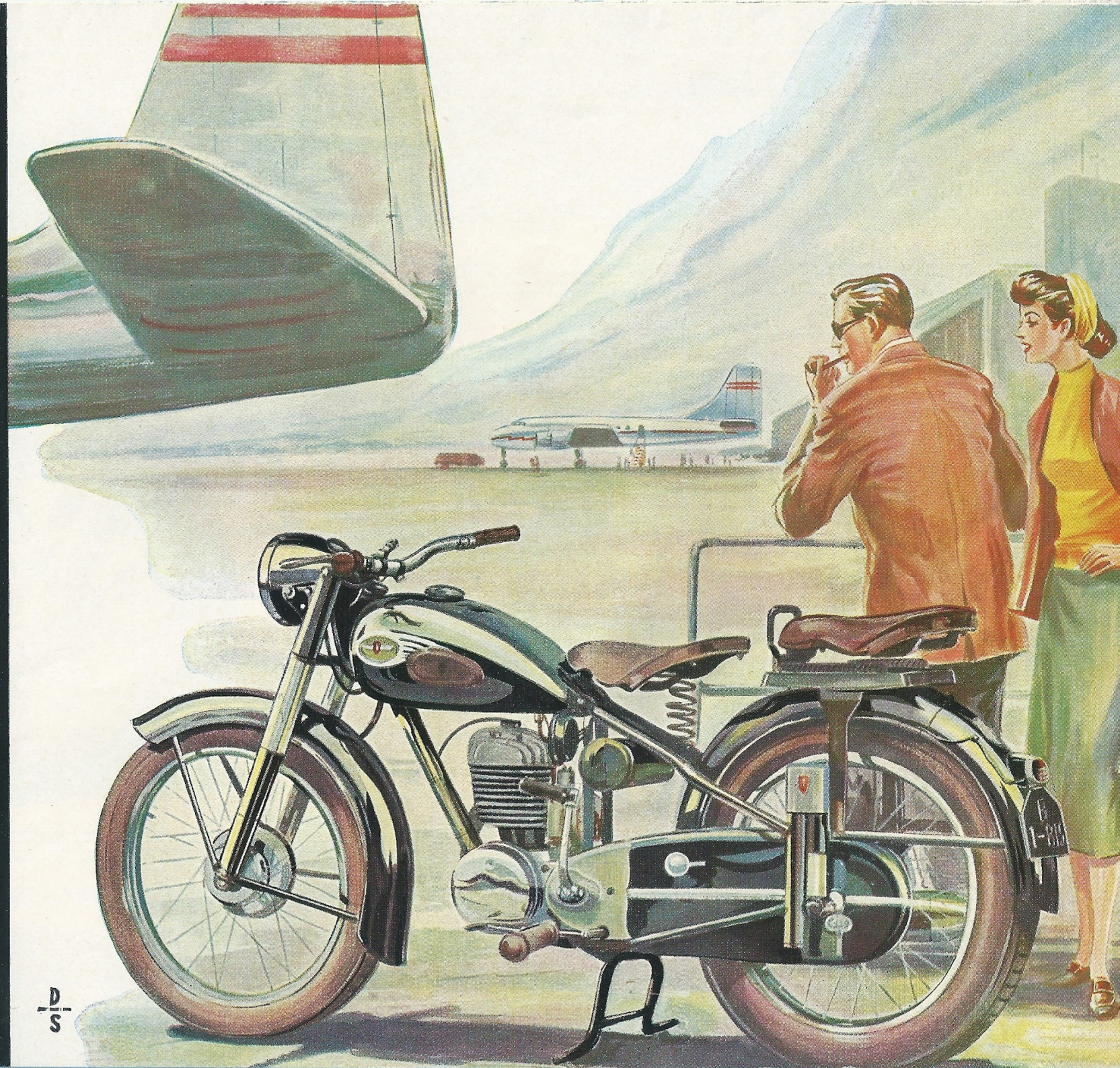




DB 234
LUXUS



ZÜNDAPP DB 234 - LUXUS



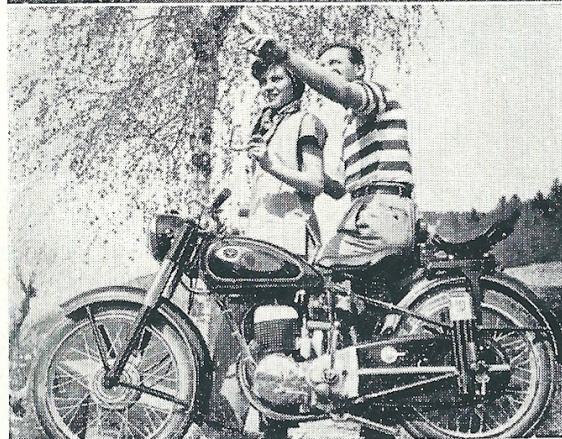
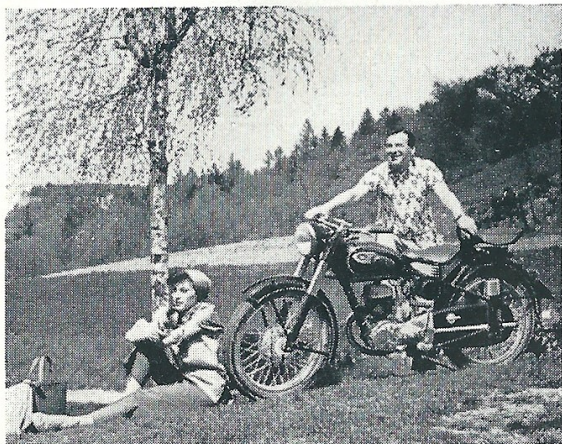
A NEW 200 cc MACHINE Designed expressly for you.

This is not just idle talk. To design our new DB 234 LUXUS we left our drafting tables and went out on the road, talked to motorcycle riders and our competition experts to find out how we could improve on our peerless NORMA.

What we have come up with in the DB 234 is a machine built in the light of experience - the experience of the road - the competitions - the drafting desk.

A machine that is designed for your pleasure and comfort.





Check for yourself the many features that combine to make the DB 234 tops among the lightweights:

198 cc ZUNDAPP single exhaust-2 stroke engine with **Double CARBURETOR** — designed for long life and good service for many thousands of miles.

Four speed **footshift gearbox** for quick — dependable shifting.
Screwed double tube frame for sturdyness and safety and inexpensive repairs.

Telescopic front and rear springing for greater comfort on the roughest roads.

Soft, wellsprung saddle to carry you the longest distance in comfort.
Amplly dimensioned internal expanding brakes for greater safety.
Dust proof chain cover — for longer chain drive — less wear.

13,5 liter (3,6 Am. gallon, 3 Imp. gall.) tank — ample for long distance riding.

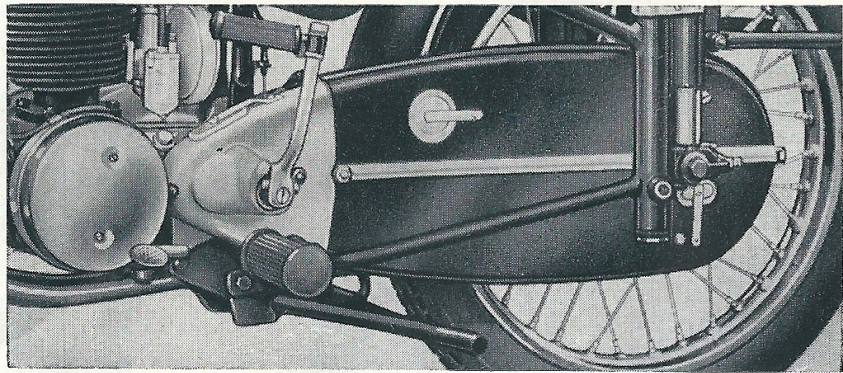
Luxury style finish.

When riding the DB 234 LUXUS you are mounted on a motorcycle built in the great ZUNDAPP tradition of:

THE GREATEST VALUE AT THE LOWEST PRICE.

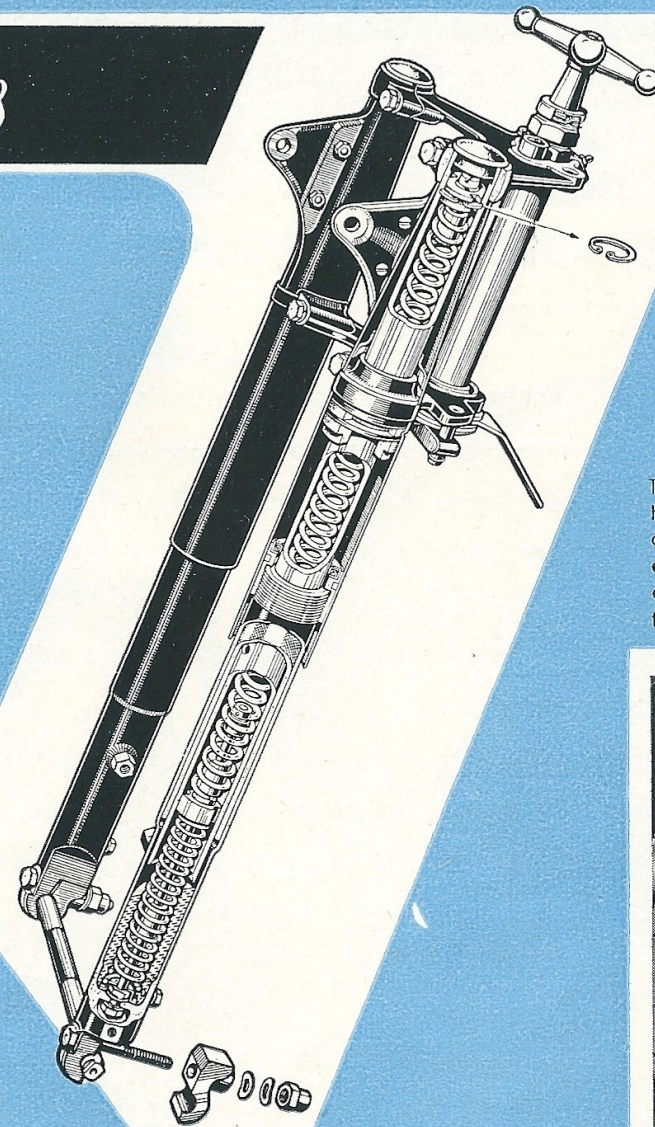


Technical details

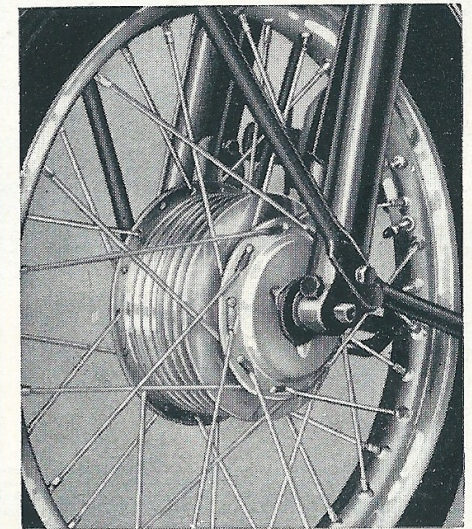


Lifetime of the driving chain is considerably prolonged by the dustproof chain guard. Small lids on it facilitate the maintenance of the chain and the dismounting of the rear wheel

The Zündapp telescopic fork of extremely simple construction resists to any stress. With a remarkable suppleness even the roughest bumps on the road are ironed out. This fork plunges for its full stroke of spring (115 mm) on bad roads, without rocking.



The impressive cylindrical light metal hubs with a diameter of 160 mm give an idea of their tremendous braking effect. The driver may unconditionally rely on them, no longer being frightened by sudden obstacles.



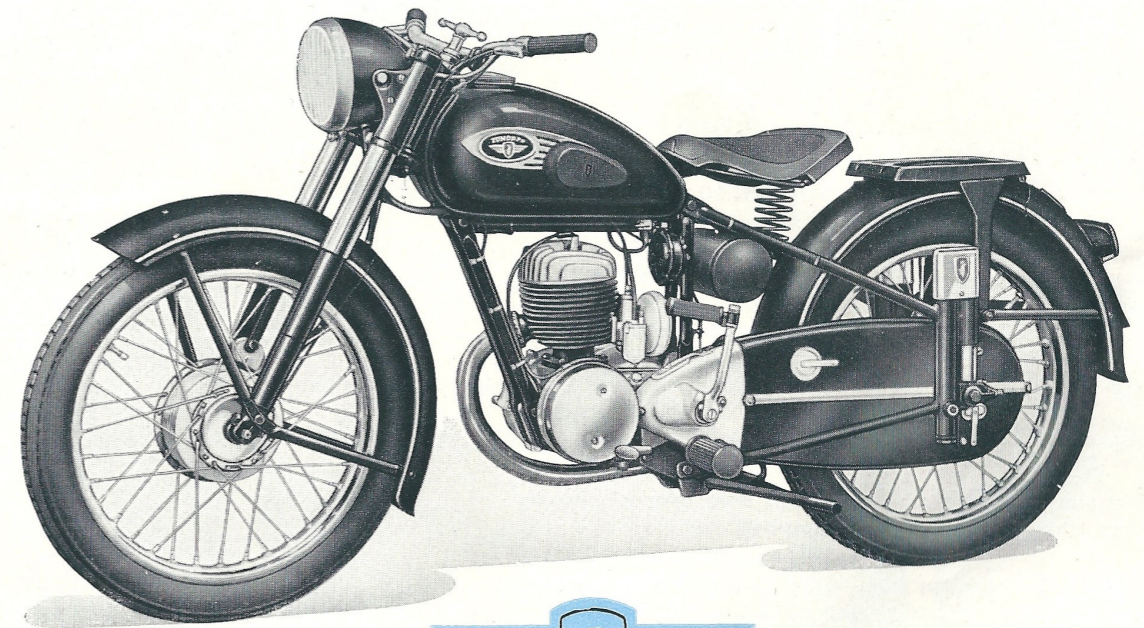
2040 B

Printed in Germany

ZÜNDAPP-WERKE GMBH NÜRNBERG

TECHNICAL DETAILS

ENGINE: Zündapp two-stroke block-type engine, one-port, bore 60 mm (2.36"), stroke 70 mm (2.70"), capacity 198 cc (12 cu. inch) — 196 cc in accordance with standardization formula —, compression ratio 1:6,1; 8,3 HP at 4600 r.p.m. One-lever twin carburetor with strangler shutter at the large-sized air filter. Mixture type lubrication, normal fuel consumption about 2,45 ltrs/100 km (1 US gall. = 98 ms, 1 Imp. gall. = 117¼ ms). Maximum speed 86 km/h = 54 ms/h when driver sits upright, 95 km/h = 59 ms/h when driver is prone. — **GEARING AND TRANSMISSION:** Zündapp four-speed gear box (selector traction shaft with cams) with foot gear change, gear box with engine in one block. Transmission ratios 1:3,14 — 1,964 — 1,405 — 1,00. Reduction ratio from engine to gear box 1:2,18. Reduction ratio from gear box to rear wheel 1:2,688. Multiple disc clutch in oil bath, transmission chain to rear wheel. — **CARRIAGE, MEASURES ETC.** Open double tube frame, screwed, broad center prop stand of tubes, handle bar and foot rests adjustable. Efficacious chain guard, rear wheel with knock-out spindle, hinged rear wheel mudguard.



ZÜNDAPP DB 234 - LUXUS



Large compression-spring rubber saddle pivoting far before saddle nose, telescopic front fork, telescopic rear wheel suspension, silencer to be disassembled, long foot brake lever, cylindrical hub brakes 160 mm ϕ (6,3"), handy controls. Deep center rims 1,85B \times 19 with steel wire balloon tyres 3,00—19. Wheel base appr. 1315 mm (51,8") — rear wheel adjustable —. Total length appr. 1995 mm (78"), total width 700 mm (27,6"), total height appr. 940 mm (37"), saddle height 765 mm (30"), ground clearance appr. 120 mm (5") — at center stand. Admissible maximum load 157 kg (346 lbs.), total weight — in running order with filled tank — 132 kg (291 lbs.), capacity of tank 13,5 ltrs. (abt. 3,6 US gall., abt. 3 Imp. gall.). — **EQUIPMENT:** 45/60 Watt battery-lighting-ignition system with 35/35 Watt Bilux lamp; illuminated speedometer dial in headlamp, knee-grips, steering damper, 2 fuel taps to drain the tank completely, long pedal for gear shifting. Extremely ample chrome plating and many polished parts, best high polish enamel finish, ample set of tools, air pump, anti-theft device. Varnish: black, red, or light green.

Code Word: LUNOR

We reserve the right to alter construction.